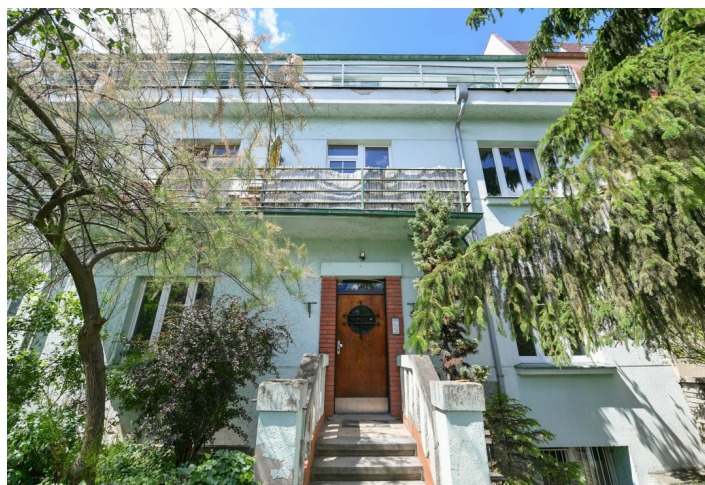




Apartment Two-bedroom (3+kk)

€ 499 504 | CZK 12 600 000

64.23 m², Prague 10, Strašnice, Ve Stínu





Apartment Two-bedroom (3+kk)

€ 499 504 | CZK 12 600 000

64.23 m², Prague 10, Strašnice, Ve Stínu

Total area	80 m ²
Floor area*	64 m ²
Terrace	16 m ²
Parking	1 parking space included in the purchase price
Cellar	Yes
PENB	D
Reference number	104572

This new, bright apartment with a private terrace, parking, and the possibility of using a shared garden is part of the extension of a cozy apartment building located in the traditional residential district of Prague 10 - Strašnice with a complete infrastructure.

The area of the 3rd top floor apartment is divided into a living room with an adjoining kitchen, two bedrooms, a bathroom (with a walk-in shower and connection to a washing machine), a separate toilet, and an entrance hall. The living room and the smaller bedroom have access to a **spacious terrace**.

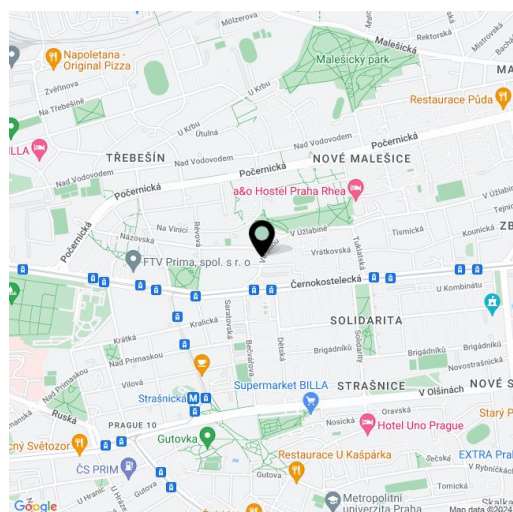
The **high standard facilities** include **triple-glazed wooden windows, oiled oak floors** (choice of 4 stain options), a safety fireproof entrance door with noise insulation, interior panel doors with **M&T Burak** hardware in **matt nickel**, **Villeroy & Boch** sink and toilet, **ISAN** bathroom radiator, **Argenta Kenzo** and **Unique Travertine Minimal** or **Ribesalbes Ocean** large-format floor and wall tiles, non-slip tiles on the terrace, and elements by the **Legrand** electrical brand. There is also a preparation for **air-conditioning** and **exterior blinds**, and floor heating in the entire apartment will be provided by a gas boiler. **The price of the apartment includes 1 parking space on the property and a cellar storage cubicle.** Residents can use a common garden. The common areas in the brick building from the 1920s-1930s with 12 apartment units have been reconstructed. **No elevator.**

A convenient location on a side street near the Solidarita tram stop, approx. 15 minutes' walk from the Strašnická metro station. Kindergartens and schools, restaurants, a post office, shops, and medical services are in the immediate vicinity, and the area is made even more pleasant by **the abundance of green areas in gardens and landscaped parks.**

Floor area 64,23 m², terrace 15.7 m².

Estimated completion date end of 2024/beginning of 2025.

Visualizations are solely for illustration purposes.



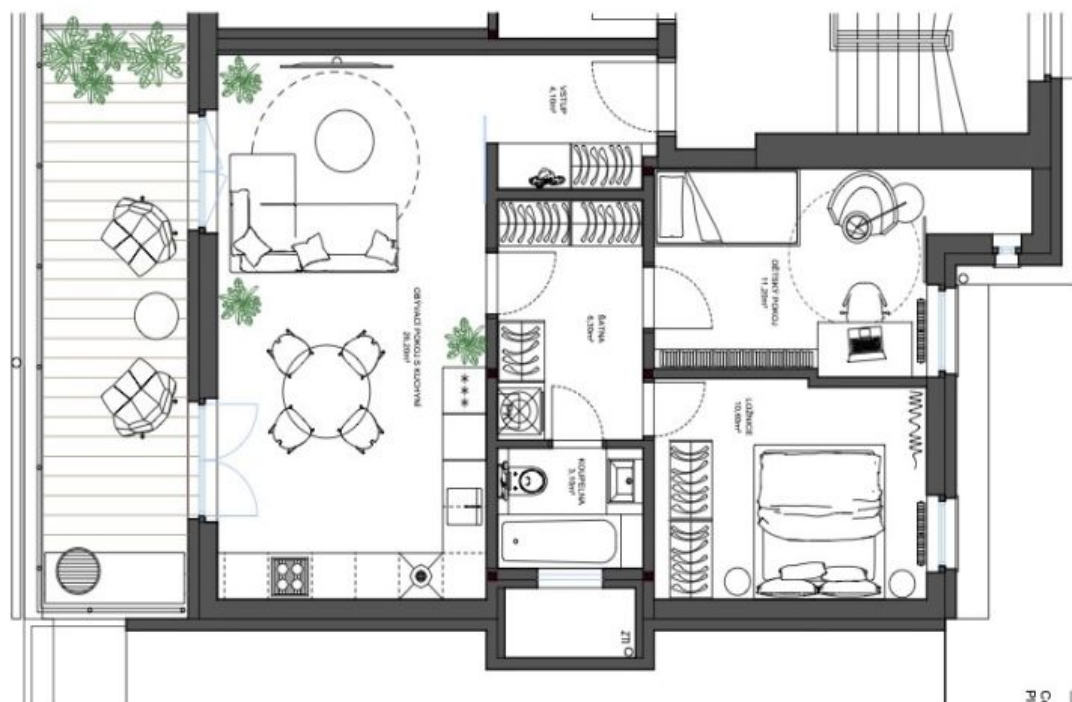
* Area of the unit according to the Civil Code. The area consists of the sum total area of the entire unit bounded by perimeter walls.



Apartment Two-bedroom (3+kk)

€ 499 504 | CZK 12 600 000

64.23 m², Prague 10, Strašnice, Ve Stínu



VÝMĚRA BYTU 6,3
Celková plocha
Plocha dle NV/386/2013

80,05m² + 15,70m² (terasa)
64,23m²

DOBAVNOSTIČEK: PŘEDANÍ: ČASOVÁ
DPS 2 x M4 10/2024
KALE: STAVEBNÍ
VÝMĚRA: CELKOVÁ PLOCHA
DISPOZICE ANP | BYT 3