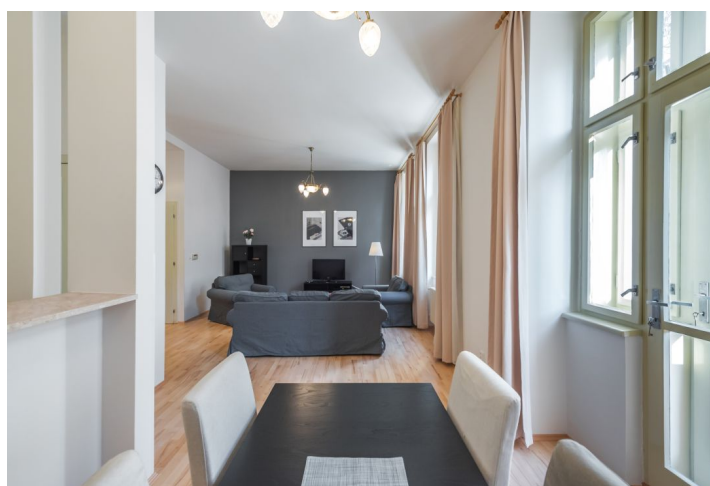




Apartment Two-bedroom (3+1)

Rented

95 m², Prague 2, Vinohrady, Belgická





Apartment Two-bedroom (3+1)

Rented

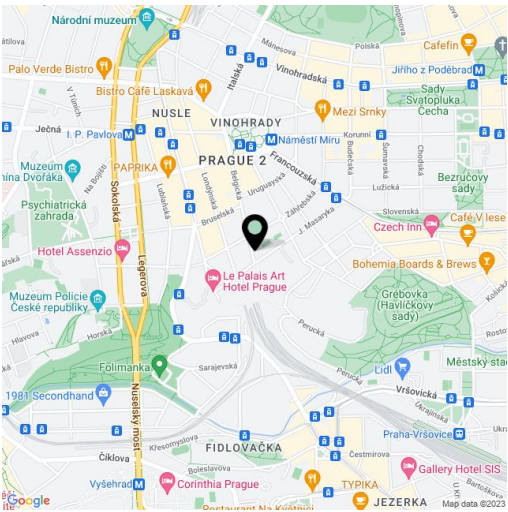
95 m², Prague 2, Vinohrady, Belgická

| | |
|------------------|---------------------------------------|
| Total area | 95 m² |
| Parking | Parking available for CZK 2000/month. |
| Cellar | - |
| PENB | G |
| Reference number | 10463 |
| Available from | Immediately |

Completely furnished 2-bedroom 2-bathroom flat with 2 balconies, on the second floor of a renovated traditional building with a lift. Located on a quiet tree lined street in an attractive residential area of Prague 2 - Vinohrady, just a minute walk from Náměstí Míru metro station and tram stops. Highly sought after location within easy reach of the city center and with full amenities nearby, within walking distance of Gröbovka and Folimanka Parks.

The flat has a living / dining room with a **balcony** and a fully fitted and equipped open kitchen, a **walk-in closet**, two bedrooms with en-suite bathrooms (one bedroom with a **balcony** and the other one with a **walk-in closet**), and a laundry / utility room. One of the bathrooms is also accessible from the hall.

High ceilings, **solid wood parquet floors**, laminated floors, recessed lighting, washer, dishwasher, microwave oven, TV, WiFi Internet, satellite TV connection, security bar on the entry door. Garage parking can be arranged at CZK 2000/month + VAT. Service charges and utilities are billed separately (CZK 3000/month fixed fees + CZK 2000/month deposit for utilities).



* Area of the unit according to the Civil Code. The area consists of the sum total area of the entire unit bounded by perimeter walls.