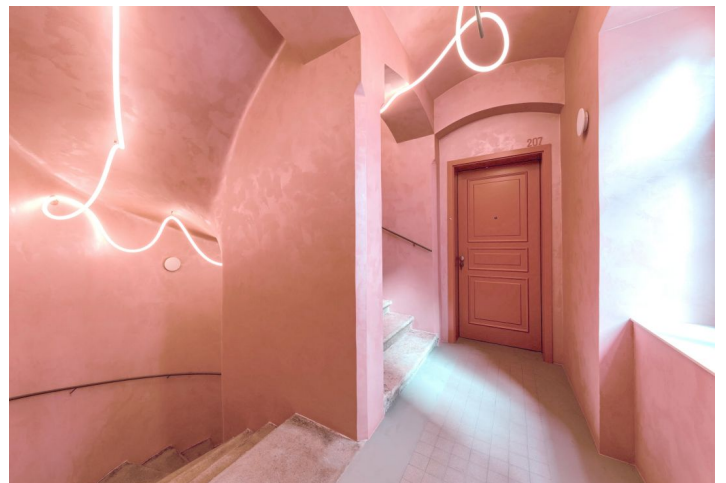




Apartment Studio (1+kk)

32.7 m², Prague 4, Nusle, Boleslavova

Sold





Apartment Studio (1+kk)

32.7 m², Prague 4, Nusle, Boleslavova

Sold

Total area	33 m ²
Parking	-
Cellar	-
PENB	C
Reference number	104697

This new exceptional attic studio apartment is located on the top floor of a boutique residential project with 15 unique units and creatively designed common areas. Originally a tenement apartment building from the 1930s, it is nestled in a green part of Prague 4 - Nusle, not far from the city center, which is excellently accessible by public transport and along a bike on a safe bike path. Expected completion by the end of 2024.

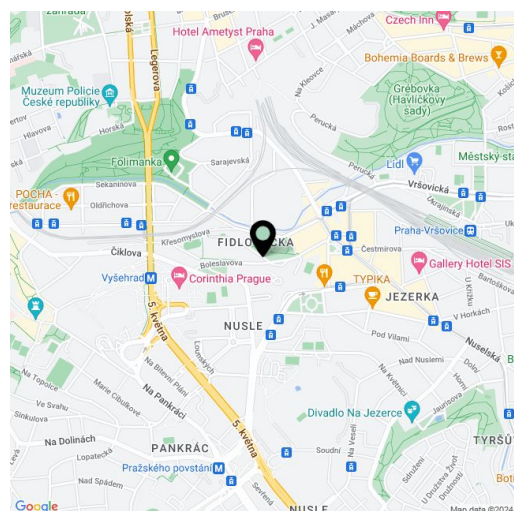
The area of the apartment consists of a living area with a preparation for a kitchen, a bathroom with walk-in shower, and a separate toilet.

The units in the project are divided into six collections. This particular apartment is part of the **Amelia** collection. Facilities include **high-quality LVT floors** in a wooden decor and properties, large-format wall and floor tiles combined with **mosaic tiles in neutral earth tones**, **Laufen and Kartell by Laufen** sanitary ware, **Grohe Essence** chrome faucets including concealed ones, a designer P.M.H. Rosendahl heated towel rail, **custom-made** entry doors and **Sapel** interior sliding doors.

This very pleasant neighborhood is nestled between the **Na Fidlovačce** and **Křesomyslův Hájíček** parks, and **Folimanka Park** with sports fields and the large green areas of **historic Vyšehrad** are nearby. Several cafés and **sports and wellness centers** are located on the **26th floor** of the Corinthia Hotel, only a short distance from the residence, and the range of services in the area will be further expanded by the future **Nuselský Pivovar residential project**. There is a tram stop just a few steps away, and the Vyšehrad metro station (line C) and Náměstí Bratří Synků Square (where a line D metro station will be built) are within easy walking distance.

Total area 32.7 m² (incl. an area of 5.7 m² with a ceiling height up to 120cm). Possibility to purchase a storage space on the floor at extra cost.

For more information, please visit the project website www.boleslavova3.cz.



* Area of the unit according to the Civil Code. The area consists of the sum total area of the entire unit bounded by perimeter walls.



Apartment Studio (1+kk)

32.7 m², Prague 4, Nusle, Boleslavova

Sold

BOLESLAVOVA 3

414

1+kk
4. podlaží
32.7 m²

Umístění v budově



Přehled ploch

01	obývací pokoj	19,1 m ²
02	koupelna	6,3 m ²
	úžitná plocha	25,4 m ²
	Svislé konstrukce	1,6 m ²
	Dodatečná plocha	5,7 m ²
	Podlahová plocha	32,7 m ²
	Celková plocha	32,7 m ²

Technologie

Podlahové vytápění / Klimatizace

Všechny informace a údaje včetně grafických vyobrazení jsou pouze orientační a ne
konkrétní. Změny a doplňky nejsou závazné a neprovozují se v rámci realizace.
Za všechny podmínky nabytí a poskytnutí informací nese zodpovědnost Svoboda & Williams
s.r.o. a její zástupci. Podlahová plocha je měřena do vnitřních úhlových
hran (01) a (02) včetně 0,10 m.

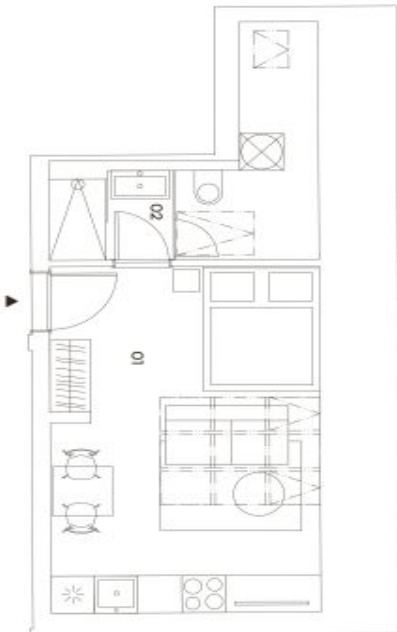


KOLEKCE ATTIC LIVING

AMELIA

V AMELII SE BYDLÍ JINAK. JAKO PODKROVNÍ BYT SE PŘÍŠNÍ VYSOKÝMI STROPY
A ZEMÍ, NA KTERÉ SE VEJDOU I TA NEJVĚŠÍ UMĚLECKÁ DÍLA. CELEÝ PROSTOR
PROSÍTELIVÍ VELKÁ STŘEŠNÍ OKNA.

CastleRock
Investments



exkluzivní zastoupení
svoboda&williams | CHRISTIE'S
INTERNATIONAL REAL ESTATE