



## Apartment One-bedroom (2+1)

Rented

91 m<sup>2</sup>, Prague 1, Josefov, Žatecká





## Apartment One-bedroom (2+1)

Rented

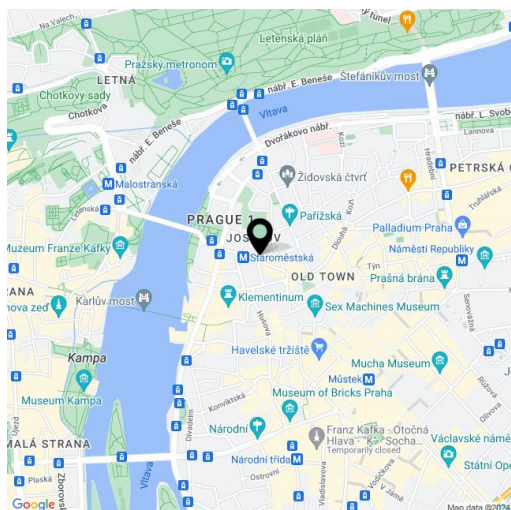
91 m<sup>2</sup>, Prague 1, Josefov, Žatecká

Total area	91 m <sup>2</sup>
Parking	-
Cellar	5 m <sup>2</sup>
Service price	Monthly deposit for services, water, and heating: CZK 5,000. Electricity is billed separately.
PENB	G
Reference number	104711
Available from	Immediately

This elegant semi-furnished southwest-facing apartment with high ceilings and views of Prague Castle is on the 3rd floor of a completely refurbished Art Nouveau building with a new elevator. Located in the prestigious Josefov Quarter, close to Old Town Square, Pařížská Street, the Vltava embankment, and the Charles Bridge. The building stands on the site of the former Jewish Quarter, with an impressive atmosphere and many historical monuments. This central location allows you to have everything you need within easy reach, and the Staroměstská metro and tram stations are about a minute's walk away.

The interior offers a forty-meter living room with a dining area and a fully fitted open plan kitchen, a corner bedroom with a bay window and a walk-in closet, a bathroom with a walk-in shower and a bidet, 2 storage rooms, a separate toilet, and a spacious entrance hall. The bathroom is accessible from the bedroom and from the hall.

Original architectural and craftsmanship elements, hardwood floors, large-format tiling, large wooden casement windows, central heating, cellar.



\* Size of the unit according to the Housing Act.

The area consists of the sum total of the internal area of every room.

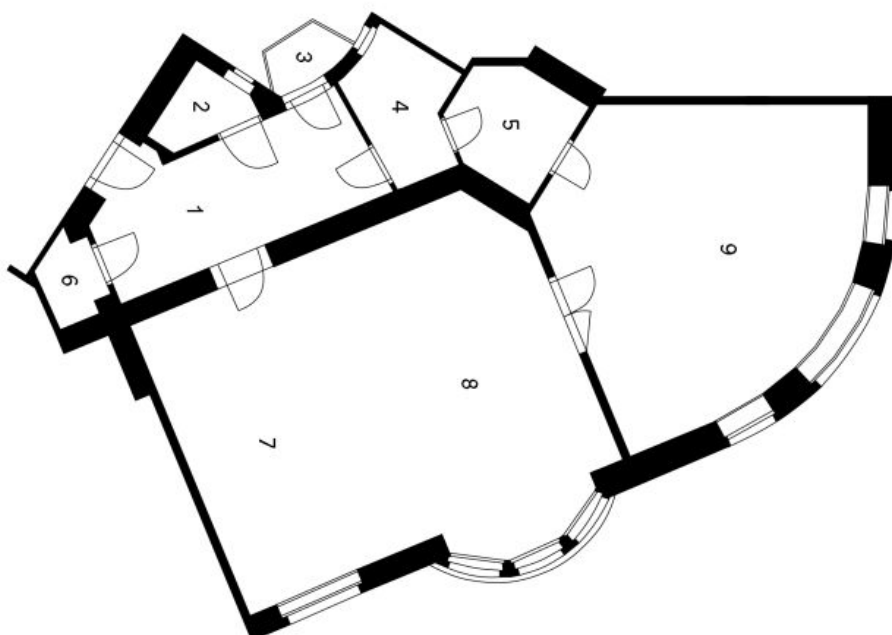


## Apartment One-bedroom (2+1)

91 m<sup>2</sup>, Prague 1, Josefov, Žatecká

Rented

- 1 Píedsíň
- 2 WC
- 3 Balkon
- 4 Koupelna
- 5 Šatna
- 6 Spíží
- 7 Kuchyň
- 8 Jídelna + Obývací pokoj
- 9 Ložnice



Žatecká

Byt 2+1

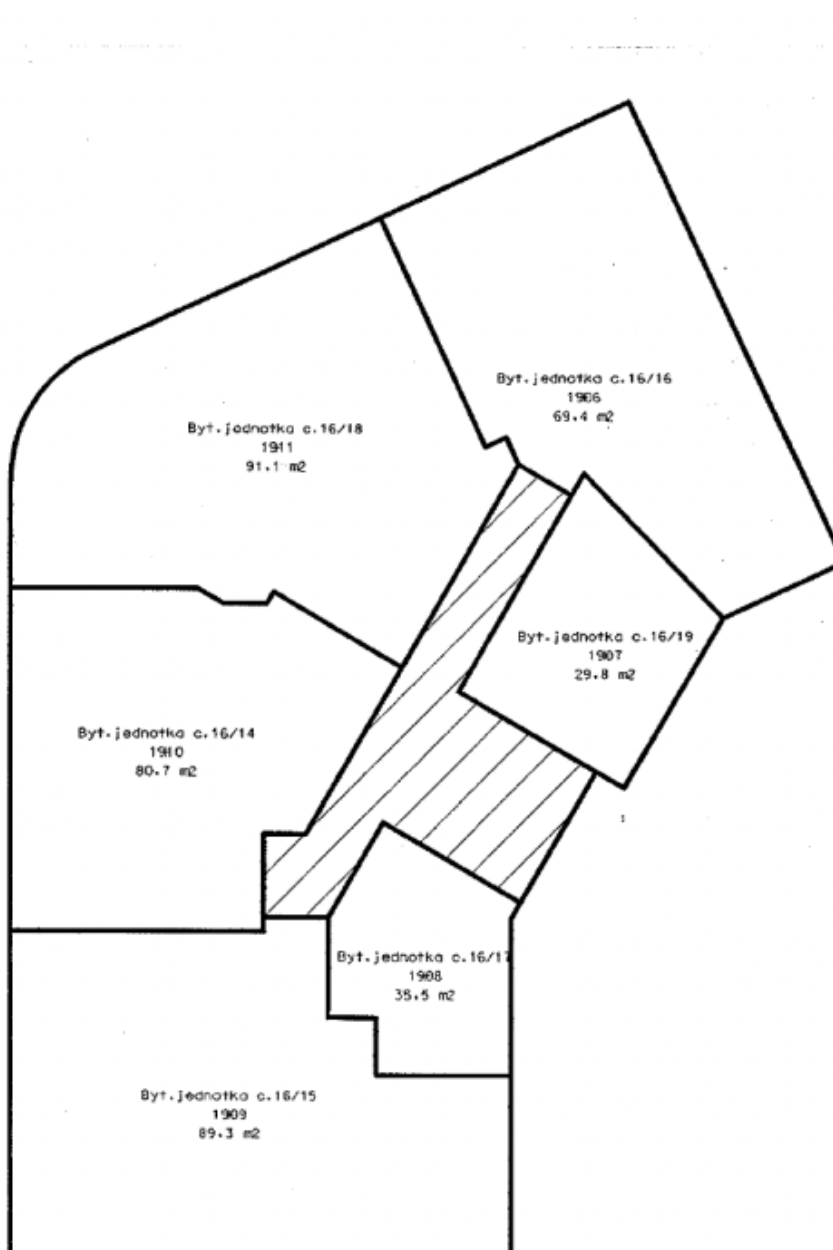
4. NP



## Apartment One-bedroom (2+1)

Rented

91 m<sup>2</sup>, Prague 1, Josefov, Žatecká





## Apartment One-bedroom (2+1)

Rented

91 m<sup>2</sup>, Prague 1, Josefov, Žatecká

