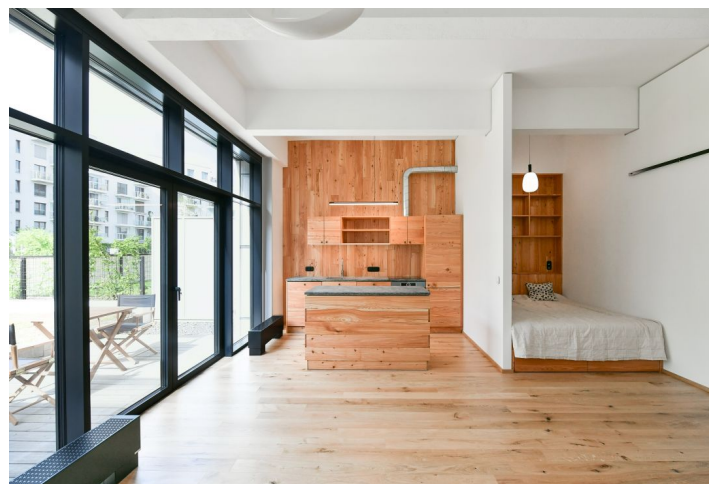
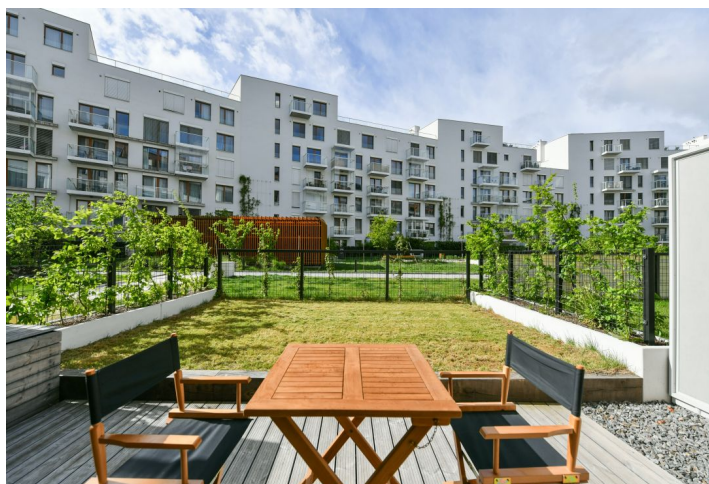




## Apartment Studio (1+kk)

47 m<sup>2</sup>, Prague 5, Košíře, Naskové

Rented





## Apartment Studio (1+kk)

Rented

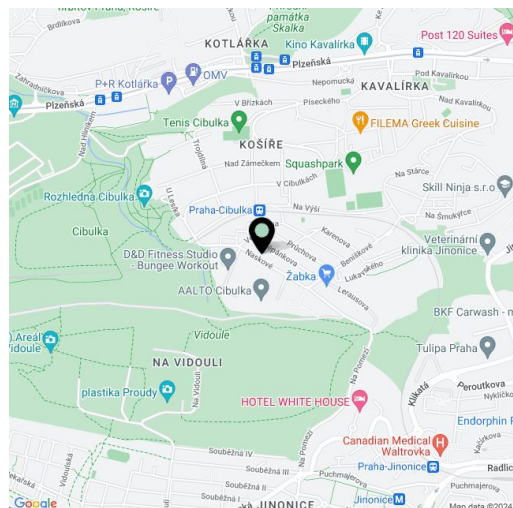
47 m<sup>2</sup>, Prague 5, Košíře, Naskové

Total area	47 m <sup>2</sup>
Front garden	35 m <sup>2</sup>
Parking	Outdoor covered parking.
Cellar	-
Service price	Monthly deposit for services, water, and heating: CZK 5,000. Electricity is billed separately.
PENB	B
Reference number	104714
Available from	01.08.2025

Benefiting from a private garden, this brand new, furnished studio apartment is on the ground floor of the recently built PARVI Cibulka residential project on the site of a former industrial hall. Amenities include a 24/7 reception and security, a fitness center, and a green park in the courtyard. Located on the very edge of the Vidoule nature preserve, near the Cibulka forest park, in a quiet residential area within easy reach of full amenities and services. Close to the Jinonice metro station, Cibulka train station with connections to Anděl and the city center, and within quick reach of the Anděl/Nový Smíchov commercial center. Conveniently located for the German School.

The apartment features a living room with a fully fitted open plan kitchen, a partially separate sleeping area and access to the terrace and garden, a shower bathroom with a toilet, a large fitted storage room, and an entrance hall with a built-in wardrobe.

Hardwood floors, tiles, larch wood kitchen and sleeping area, automatic exterior blinds, central heating, stone kitchen counter, Bosch built-in kitchen appliances, dishwasher, washer, induction stove top, video entry phone, alarm, camera system, pram storage, bike and dog wash area. An outdoor covered parking space is included.



\* Area of the unit according to the Civil Code. The area consists of the sum total area of the entire unit bounded by perimeter walls.