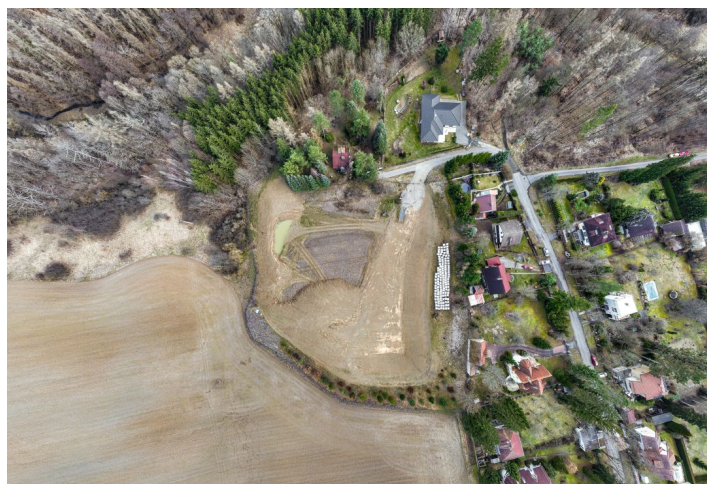




Land

12 763 m<sup>2</sup>, Kladno, Unhošť, Suchomlýnská

€ 932 725 | CZK 23 500 000





## Land

12 763 m<sup>2</sup>, Kladno, Unhošť, Suchomlýnská

€ 932 725 | CZK 23 500 000

Price per sq. m.	1 841 CZK
Total area	12 763 m <sup>2</sup>
Land type	Housing
Reference number	104715

This comprehensive set of plots with a total area of over 12,500 m<sup>2</sup> is located in a perfectly quiet, natural and at the same time easily accessible place near the Křivoklátsko Protected Area. The location and the area of the plot offer complete privacy and are within easy reach of everything you need, as the area is set next to a forest on the edge of the Central Bohemian town of Unhošť, less than 20 km from the western edge of Prague.

Two water wells are built on the plot, and the electricity connection is in the distribution box next to the plot. The regulation given by the zoning plan specifies a coefficient of built-up area up to 0.2 and the coefficient of greenery at least 0.7. The building height is set at 9 m main cornice + receding floor, roof ridge 11 m.

The plots are located in a quiet valley surrounded by forests, near the Povodí Kačáku natural monument and Křivoklátsko PLA. In the town of Unhošť with a nice historic center, the necessary civic amenities including schools, shops, offices and medical services operate, thanks to the connection to the D6 highway, which is about 6 km from the property, Prague is very easily accessible. Near the future houses is a bus stop with connections to Beroun and Kladno.

Total area 12,763 m<sup>2</sup>.

