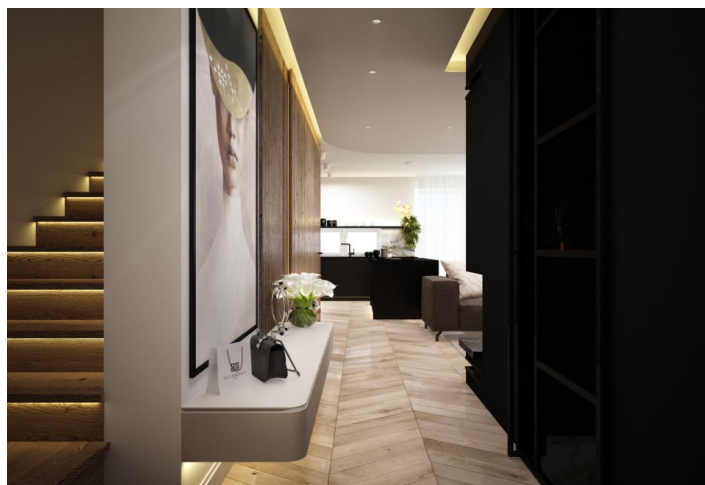




## Apartment Three-bedroom (4+1)

€ 249 900 | CZK 6 268 742

104 m<sup>2</sup>, Miloslavov, Senec





## Apartment Three-bedroom (4+1)

€ 249 900 | CZK 6 268 742

104 m<sup>2</sup>, Miloslavov, Senec

Total area	117 m <sup>2</sup>
Floor area*	104 m <sup>2</sup>
Terrace	13 m <sup>2</sup>
Garden	250 m <sup>2</sup>
Parking	Yes
Cellar	-
Reference number	104725

**This superbly designed three-bedroom duplex with a garden and parking space in the courtyard is part of a family house with two residential units in the quiet village of Miloslavov, only 8 km from Bratislava.**

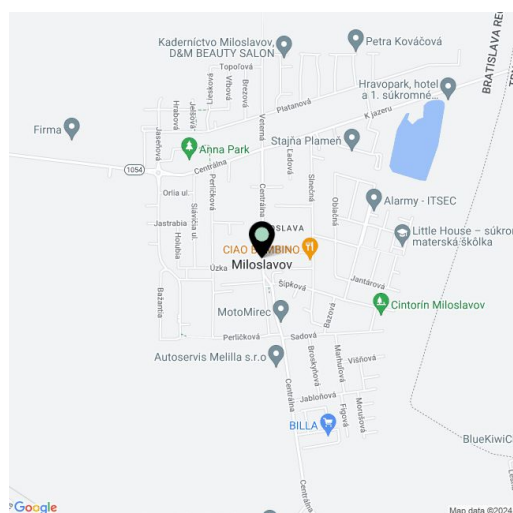
The layout of the apartment consists of an entrance hall, a separate toilet with a utility room, a living room with a kitchen and **fireplace** outlet, and storage space under the stairs (closet). Upstairs, there are **3 bedrooms** and a bathroom with a toilet, bathtub, and shower.

The house is insulated, surrounded by a mesh gate, and additional privacy is provided by a brick fence in front of the house. Interlocking tiles have been laid outside the house. It is possible to complete the apartment to the standard of your choice. Convenient parking for **3 vehicles** just behind the gate.

The village of Miloslavov is located **8 km from Bratislava**. It offers a good range of civic amenities, a kindergarten, a primary school, a post office, a municipal office, a new BILLA shopping center, a pharmacy, a police office, shops, cafes, a church, and a community center. Many leisure activities can be enjoyed nearby ( X-Bionic Sphere, Košariská Lake, bike trail).

Total usable area 104 m<sup>2</sup>, terrace 13 m<sup>2</sup>, plot 305 m<sup>2</sup>.

Cena EUR 249 900.



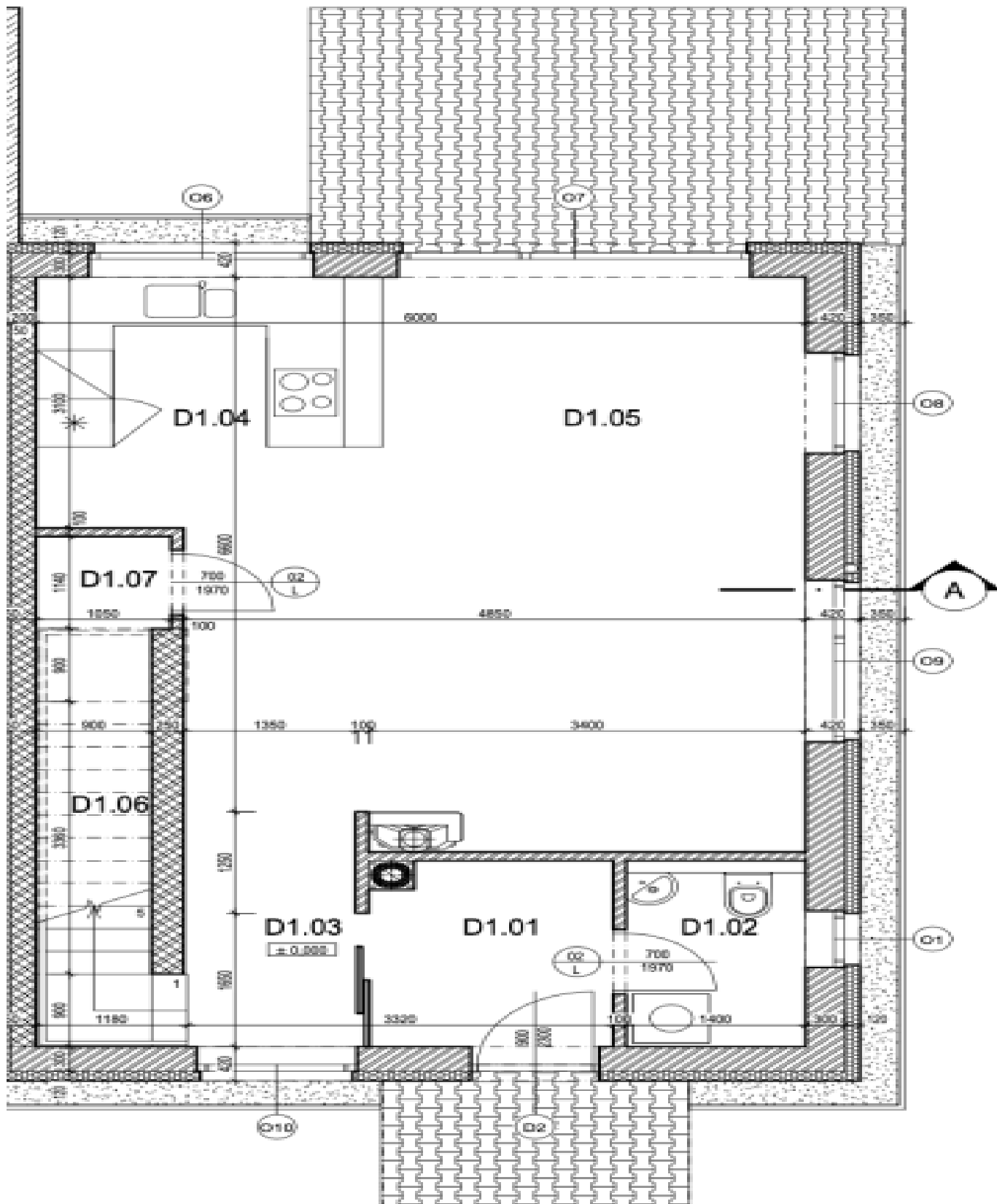
\* Area of the unit according to the Civil Code. The area consists of the sum total area of the entire unit bounded by perimeter walls.



# Apartment Three-bedroom (4+1)

€ 249 900 | CZK 6 268 742

104 m<sup>2</sup>, Miloslavov, Senec





## Legenda miestností 1.NP

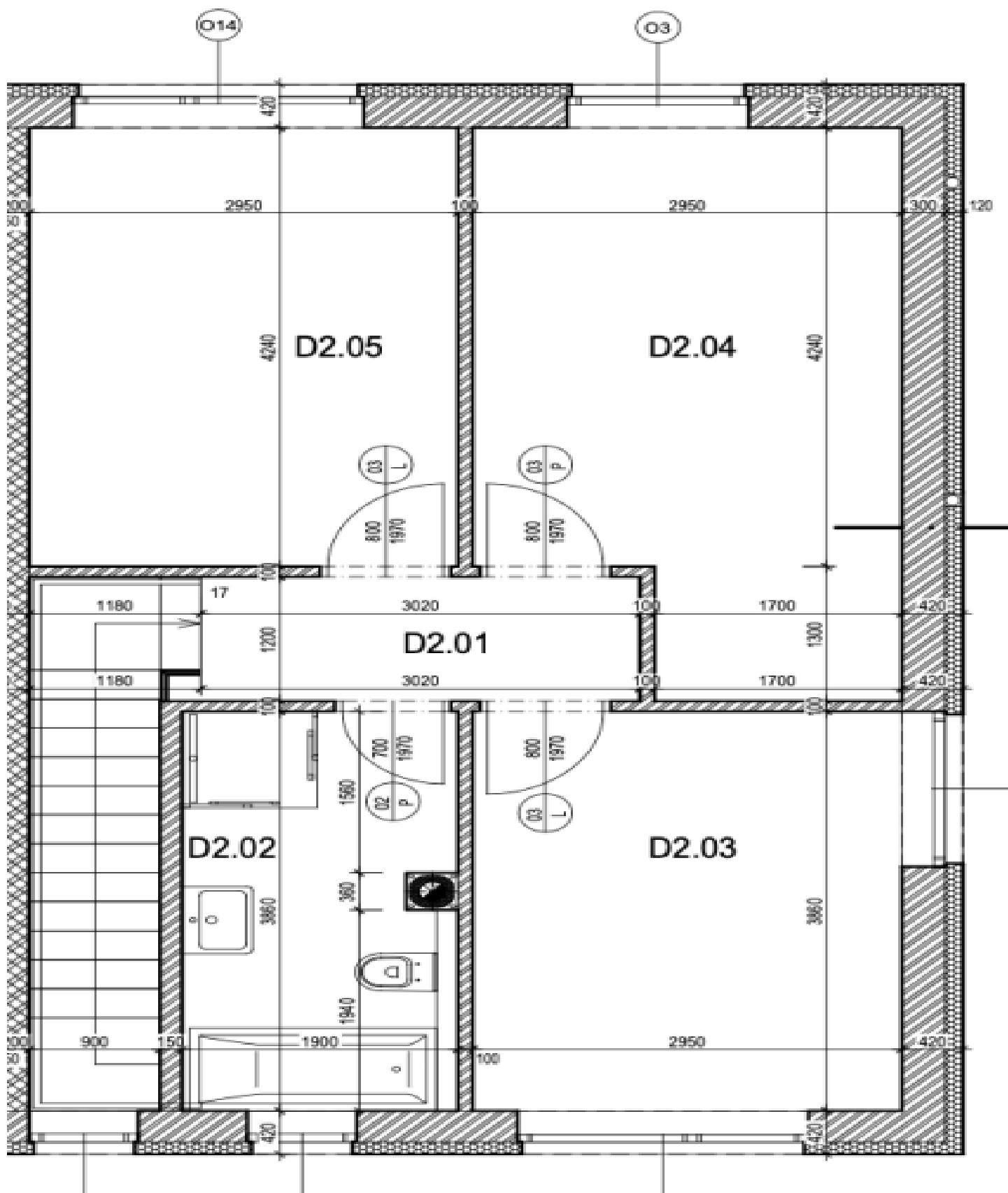
Č.M.	Názov	Plocha	Povrchy		
			Podlaha	Stena	Strop
<b>Byt C</b>					
C1.01	Vstupná hala	4.21 m <sup>2</sup>	Keramická dlažba	Omietka + maľba	Omietka + maľba
C1.02	Tech. miestnosť	3.01 m <sup>2</sup>	Keramická dlažba	Keramický obklad	Omietka + maľba
C1.03	Chodba	3.93 m <sup>2</sup>	Parkey	Omietka + maľba	Omietka + maľba
C1.04	Kuchyňa	8.74 m <sup>2</sup>	Parkey	Omietka + maľba	Omietka + maľba
C1.05	Obývací priestor	28.54 m <sup>2</sup>	Parkey	Omietka + maľba	Omietka + maľba
C1.06	Schodisko	4.09 m <sup>2</sup>	Drevený obklad	Omietka + maľba	Omietka + maľba
C1.07	Podschodný priestor	2.01 m <sup>2</sup>	Keramická dlažba	Omietka + maľba	Omietka + maľba
<b>BYT C spolu 1. NP</b>					
		54.53 m <sup>2</sup>			
<b>Byt D</b>					
D1.01	Vstupná hala	4.19 m <sup>2</sup>	Keramická dlažba	Omietka + maľba	Omietka + maľba
D1.02	Tech. miestnosť	3.01 m <sup>2</sup>	Keramická dlažba	Keramický obklad	Omietka + maľba
D1.03	Chodba	3.95 m <sup>2</sup>	Parkey	Omietka + maľba	Omietka + maľba
D1.04	Kuchyňa	8.74 m <sup>2</sup>	Parkey	Omietka + maľba	Omietka + maľba
D1.05	Obývací priestor	28.53 m <sup>2</sup>	Parkey	Omietka + maľba	Omietka + maľba
D1.06	Schodisko	4.09 m <sup>2</sup>	Drevený obklad	Omietka + maľba	Omietka + maľba
D1.07	Podschodný priestor	2.01 m <sup>2</sup>	Keramická dlažba	Omietka + maľba	Omietka + maľba
<b>BYT D spolu 1. NP</b>					
		54.52 m <sup>2</sup>			
<b>1. NP celkom</b>		<b>109.05 m<sup>2</sup></b>			
BYT C celková podlahová plocha		103.73 m <sup>2</sup>			
BYT D celková podlahová plocha		103.72 m <sup>2</sup>			



# Apartment Three-bedroom (4+1)

€ 249 900 | CZK 6 268 742

104 m<sup>2</sup>, Miloslavov, Senec





## Legenda miestností 2.NP

Č.M.	Názov	Plocha	Povrchy		
			Podlaha	Stena	Strop

## Byt C

C2.01	Chodba	3.71 m <sup>2</sup>	Parkety	Omietka + maľba	SDK podlahad
C2.02	Kúpeľňa	6.88 m <sup>2</sup>	Keramická dlažba	Keramický obklad	SDK podlahad
C2.03	Spáľňa	13.60 m <sup>2</sup>	Parkety	Omietka + maľba	SDK podlahad
C2.04	Izba	12.51 m <sup>2</sup>	Parkety	Omietka + maľba	SDK podlahad
C2.05	Izba	12.51 m <sup>2</sup>	Parkety	Omietka + maľba	SDK podlahad

## BYT C spolu 2. NP

49.20 m<sup>2</sup>

## Byt D

D2.01	Chodba	3.71 m <sup>2</sup>	Parkety	Omietka + maľba	SDK podlahad
D2.02	Kúpeľňa	6.88 m <sup>2</sup>	Keramická dlažba	Keramický obklad	SDK podlahad
D2.03	Spáľňa	11.39 m <sup>2</sup>	Parkety	Omietka + maľba	SDK podlahad
D2.04	Izba	14.72 m <sup>2</sup>	Parkety	Omietka + maľba	SDK podlahad
D2.05	Izba	12.51 m <sup>2</sup>	Parkety	Omietka + maľba	SDK podlahad

## BYT D spolu 2. NP

49.20 m<sup>2</sup>

## 2. NP celkom

98.41 m<sup>2</sup>

BYT C celková podlahová plocha

103.73 m<sup>2</sup>

BYT D celková podlahová plocha

103.72 m<sup>2</sup>