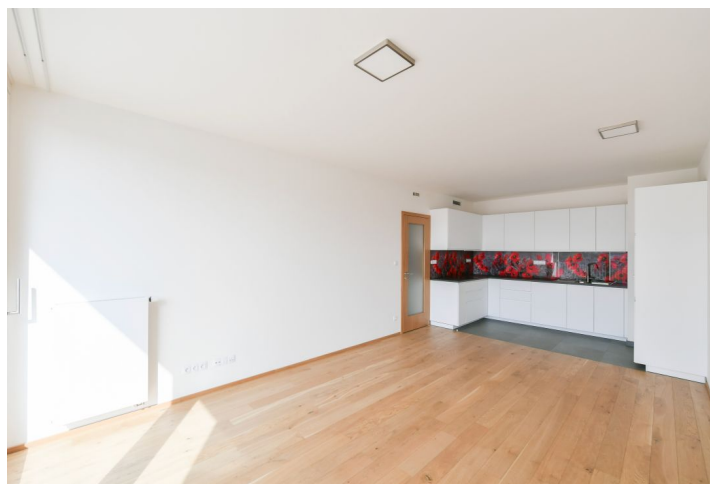




Apartment One-bedroom (2+kk)

Rented

58.6 m², Praha 5, Smíchov, Šiklové





Apartment One-bedroom (2+kk)

Rented

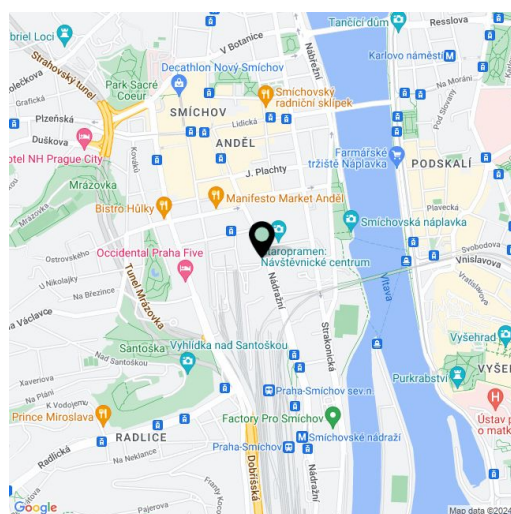
58.6 m², Praha 5, Smíchov, Šiklové

| | |
|------------------|--|
| Total area | 64 m ² |
| Floor area* | 59 m ² |
| Loggia | 6 m ² |
| Parking | Garage parking. |
| Garage | Yes |
| Cellar | Yes |
| Service price | Monthly deposit for services, water, and heating: CZK 5,000. Electricity is billed separately. |
| PENB | B |
| Reference number | 104741 |
| Available from | Immediately |

This brand-new, unfurnished apartment with 2 enclosed balconies is situated on the 3rd floor of the Smíchov City residential building with an elevator and parking. Located close to the Anděl commercial center in Smíchov, in a newly arising district with a pedestrian zone, with great accessibility by metro and tram, and easy reach of the French School, the Smíchov and Výtoň embankments, several sports grounds, rich amenities and services, the Anděl metro station, and the Na Knížecí bus terminal.

The interior features a living room with a fully fitted open plan kitchen and enclosed balcony, a bedroom with a second enclosed balcony, a shower bathroom with a toilet, and an entrance hall.

Heat recovery ventilation, hardwood floors, tiles, security entry door, central heating, dishwasher, induction stove top, microwave oven, video entry phone, cellar. A garage parking space is included.



* Area of the unit according to the Civil Code. The area consists of the sum total area of the entire unit bounded by perimeter walls.