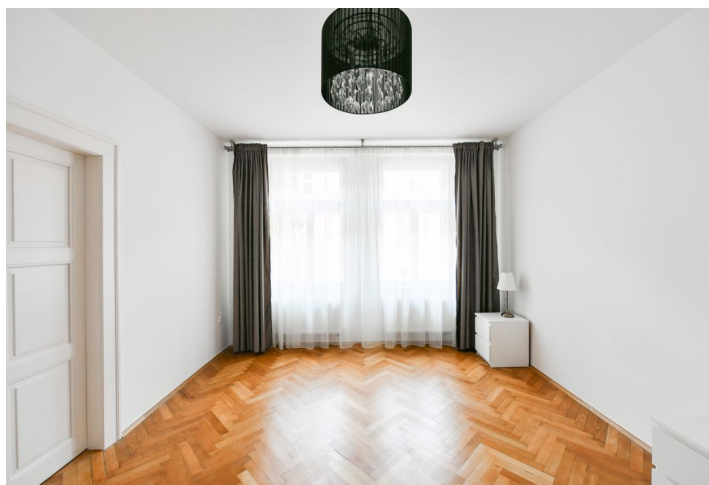




Apartment One-bedroom (2+1)

Rented

91 m², Prague 3, Vinohrady, Slezská





Apartment One-bedroom (2+1)

Rented

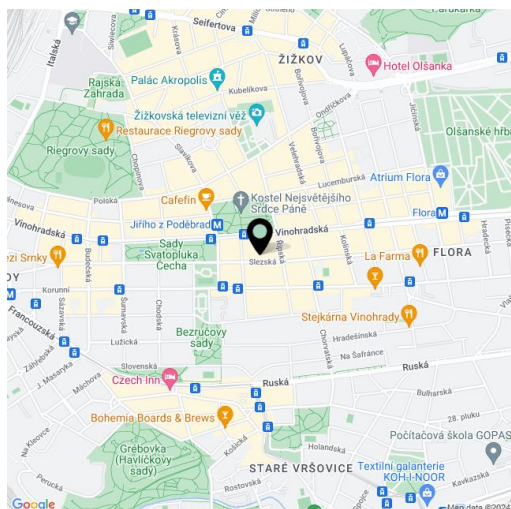
91 m², Prague 3, Vinohrady, Slezská

| | |
|------------------|--|
| Total area | 95 m ² |
| Floor area* | 91 m ² |
| Balcony | 3 m ² |
| Parking | - |
| Cellar | Yes |
| Service price | Monthly deposit for services and water: CZK 1,030/pers./month. Electricity is billed separately. |
| PENB | G |
| Reference number | 104746 |
| Available from | Immediately |

This newly refurbished, furnished apartment with a balcony, on the 3rd floor of a renovated residential building with no elevator is located on a quiet residential street just a short walk from the Jiřího z Poděbrad metro station and a tram stop with very quick access to the city center, near the Flora metro station and Atrium Flora shopping mall. An attractive sought-after location with complete amenities and services in close vicinity, within easy reach of the Svatopluka Čecha Park and the popular Riegrovy Sady Park.

The interior features a living room, a fully fitted kitchen with a dining area, a bedroom with a large built-in wardrobe, a bathroom with a **double walk-in shower with a massage panel**, a separate toilet, a utility room, a **dressing room/closet**, and a spacious entrance hall with a **balcony** facing the courtyard.

Hardwood parquet floors, tiles, electric boiler, washing machine, dishwasher, induction stove top, microwave oven, TV, **cellar**.



* Size of the unit according to the Housing Act.

The area consists of the sum total of the internal area of every room.