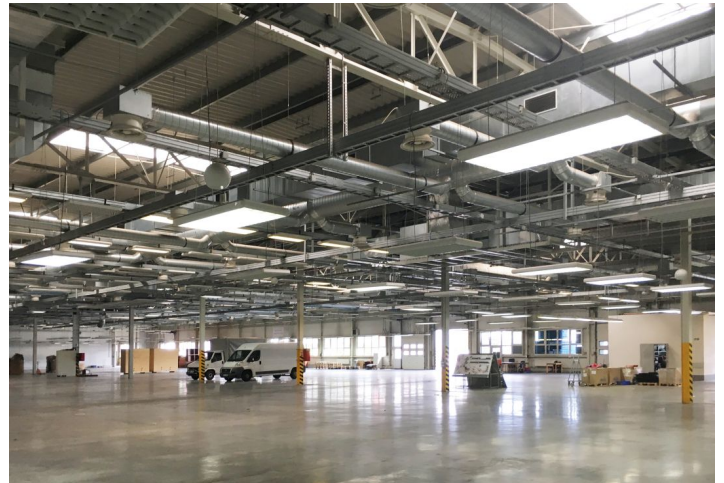




Warehouse space

2 438 m², Brno-město, Brno - Slatina, Evropská

Ask for price





Warehouse space

[Ask for price](#)2 438 m², Brno-město, Brno - Slatina, Evropská

Total area	2 438 m ²
Available area for rent	2 438 m ²
Ceiling height	10 m
Floor loading capacity	5 t/m ²
Column grid structure	—
Structure	Reinforced concrete structure
PENB	G
Reference number	104773

2,438 sq.m. of warehouse and office space for lease near Airport Brno-Tuřany. A Class premises are suitable for logistics and distribution activities.

Location:

Located basically directly at the exit from Czech Republic's key motorway D1. The airport is located near the junction of major motorways to Vienna which is 80 minutes away, Bratislava which is 70 minutes away, Ostrava which is 90 minutes away, and Prague which is 110 minutes away. There is a regular public transport service between the airport and the center of Brno; a railway siding leads to the park. Ideal logistic location to supply Czech, Slovakia, Austria, Poland, and Hungary.

Features and Services:

- Flexible units (storage / office / light production / showroom)
- Onsite property management
- Park maintenance
- Accessibility 24/7
- 30 parking places

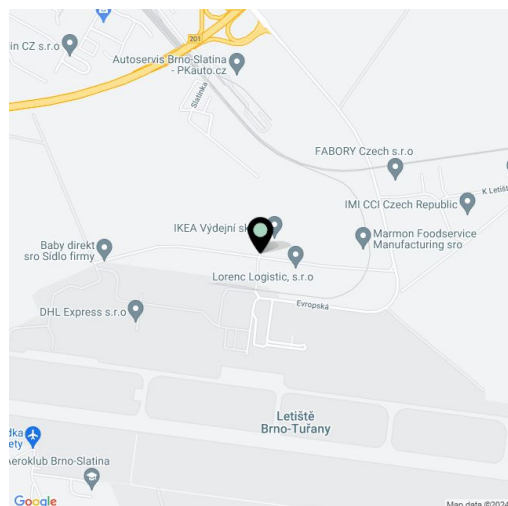
Storage/Industrial space:

- Floor loading capacity 5 T/sq.m
- Clear height 10 m
- Docks, each dock equipped with hydraulic leveller, 60 kN capacity
- 1x electrically operated 3.5 x 4.2 m drive-in gate for each 5 000 sqm of hall
- Min. 2 % of skylights in warehouse area
- Column grid structure 24x12 m
- 200 Lux LED lighting
- ESRF sprinkler system

Office:

- Office space according to the client's requirements
- Air-conditioning

Lessee pays no commission.





Warehouse space

2 438 m², Brno-město, Brno - Slatina, Evropská

Ask for price

