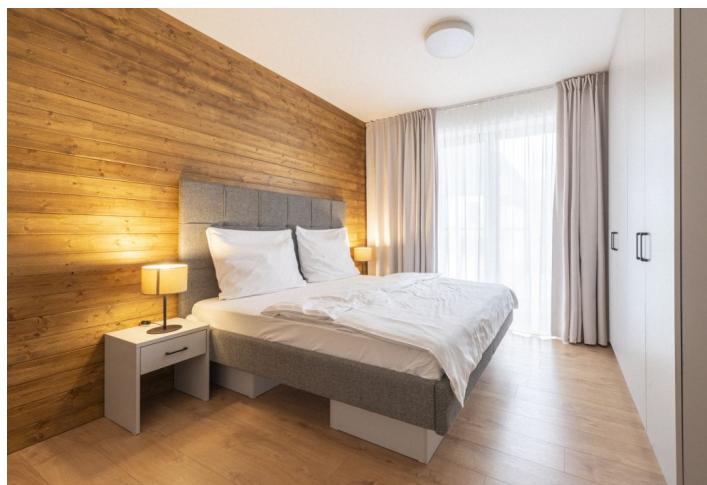




## Apartment One-bedroom (2+kk)

€ 210 000 | CZK 5 319 300

47.38 m<sup>2</sup>, Tatranská Štrba, Tatranská Štrba, Lúčna





## Apartment One-bedroom (2+kk)

€ 210 000 | CZK 5 319 300

47.38 m<sup>2</sup>, Tatranská Štrba, Tatranská Štrba, Lúčna

Total area	59 m <sup>2</sup>
Floor area*	47 m <sup>2</sup>
Balcony	12 m <sup>2</sup>
Parking	-
Cellar	-
PENB	G
Reference number	104777

This fully furnished one-bedroom apartment that can be used for both permanent living or recreational housing is surrounded by the beautiful and clean nature of the High Tatras. The apartment with a balcony is located on the 2nd floor of the ARIETES MARMONT RESORT\*\*\*\* 4-star complex in Tatranská Štrba.

The layout of the apartment consists of an entrance hall and a living area connected to the kitchen, dining room, and access to the balcony with picturesque views of the High Tatras. There is also a bedroom with access to the balcony and a bathroom (shower, toilet).

The quality facilities of this fully equipped apartment include a fully fitted kitchen with appliances (Mora hob, Philco fridge/freezer, Gorenje microwave and kettle). The apartment includes hotel services and a wellness area.

The sought-after location offers many hikes in the forest, sports opportunities, natural swimming spots, and golf. The hotel complex includes a restaurant, outdoor playground, wellness area with a swimming pool and bar, massages, a children's corner, outdoor playground, gym, night bar, cigar lounge, and ARIETES and MARMONT conference rooms. Less than 200 meters away from the apartment is the Štrba railway station, which is on the fast train line from Bratislava and Košice. From the station you can also take the cog railway directly to the Štrbské pleso tourist resort. Near the apartment is an exit to the D1 highway.

Total area 59.08 m<sup>2</sup>, apartment 47.38 m<sup>2</sup> + balcony 11.7 m<sup>2</sup>

\* Area of the unit according to the Civil Code. The area consists of the sum total area of the entire unit bounded by perimeter walls.

