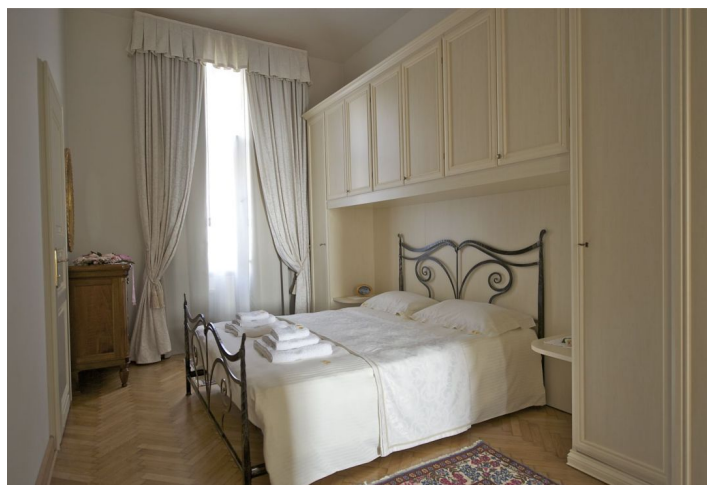




Apartment One-bedroom (2+1)

€ 1 300 | CZK 32 832

77.9 m², Prague 1, Nové Město, Truhlářská





Apartment One-bedroom (2+1)

€ 1 300 | CZK 32 832

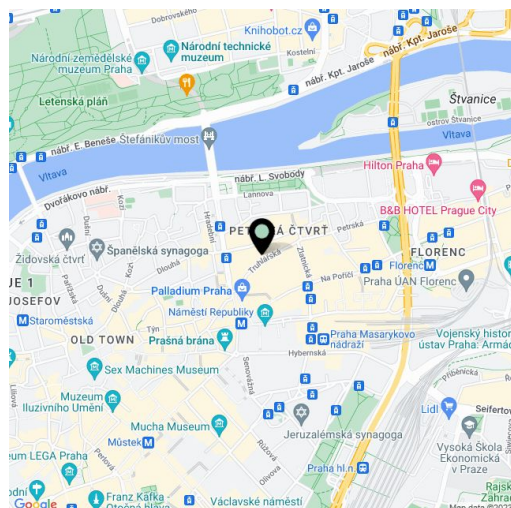
77.9 m², Prague 1, Nové Město, Truhlářská

Total area	78 m ²
Parking	-
Cellar	-
Service price	Fixed payment for service charges and internet EUR 200/month + VAT. Deposit for utilities EUR 280/month + VAT.
PENB	G
Reference number	10482
Available from	Immediately

Fully refurbished furnished apartment on the 3rd floor of a sensitively reconstructed classic late 19th century building with a new elevator located on a quiet street mere steps from Náměstí Republiky Square with the Palladium and Kotva shopping malls, tram stops and a metro station, within walking distance of Old Town Square as well as Wenceslas Square.

The apartment features a fully fitted and equipped kitchen with a dining area, a living room, one bedroom, and a bathroom incl. a bathtub with a shower screen.

Air-conditioning, high ceilings, large windows, **hardwood parquet floors**, tiles, security entry door, built-in storage, gas boiler, washer, dishwasher, microwave oven, kitchenware, video entry phone, satellite TV.



* Area of the unit according to the Civil Code. The area consists of the sum total area of the entire unit bounded by perimeter walls.