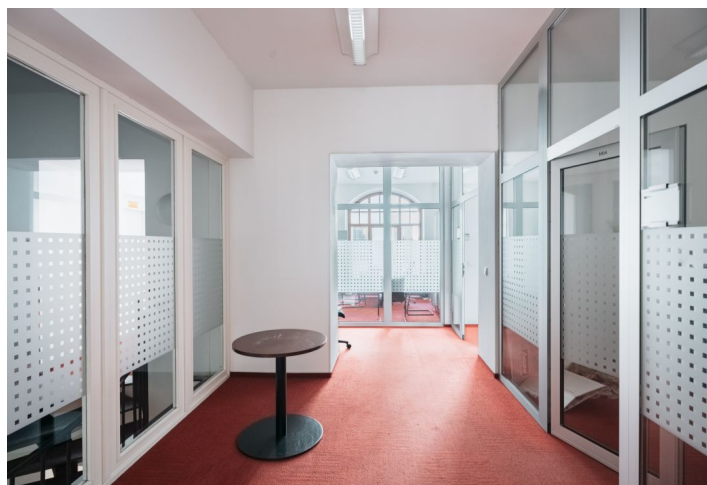




Office space

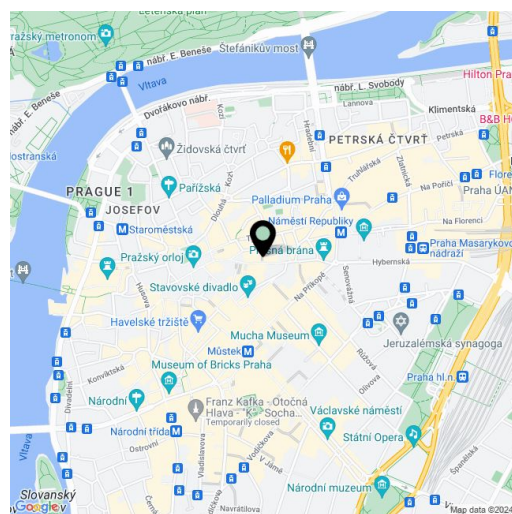
Prague 1, Staré Město, Celetná

€ 12.50 / m² | CZK 315 / m²





Available area	126 m ²
Cellar	-
Parking	-
PENB	G
Reference number	104860



Non-residential premises for lease on the 1st floor in a building located on the Celetná Street in the historical center of Prague and it's also the first part of the Royal Route leading to Prague Castle. In the immediate vicinity there are many cultural monuments, major buildings, restaurants, cafes, and shops. The Staroměstská (line A), Můstek (line A, B) and Náměstí Republiky (line B) metro stations are within walking distance.

The premises are divided into a main corridor (13.2 sq. m), a social facilities (3 sq. m), a lobby (4.9 sq. m), a cleaning room (1.3 sq. m), a staircase (10.9 sq. m), a corridor to the office space (23.5 sq. m) and 4 office units (16.8 sq. m; 21.5 sq. m; 10.5 sq. m and 13.9 sq. m). Tenants also have access to a roof terrace with attractive views.

Building:

The façade of the building is dominated by a two-story bay window with a decorative roof, a Neo-Gothic gable and sgraffito ornaments (Czech eagle, Czech lion, and Moravian eagle) by the painter Mikoláš Alš. The name of the listed house is partly derived from these ornaments.

History:

The house was built in 1897 according to the designs of Austrian architect Friedrich Ohmann. The six-story building in an eclectic style combines elements of Neo-Gothic and Neo-Renaissance.

Dům U České orlice is situated on the site of an original medieval building, whose history dates back to 1357. From the 16th century it was associated with the noble family from Bubna and Litic, who had it rebuilt in a Baroque style. The original house was demolished as part of the redevelopment of Old Town, which gave rise to a family apartment house with a medical practice, whose investor was the Prague physician Čeněk Klika.

Features and Services:

- Shop windows, large windows, high ceilings
- Elevator in the office and residential part of the building
- Private elevator and staircase in the commercial unit
- Possibility to build a garden in the courtyard
- Balcony towards the courtyard in the office part
- Toilets and kitchenette on each floor
- Shower and closet on the first underground floor
- Fiber-optic cable

Photos of the non-residential premises used in this presentation have been edited post-production to give a more accurate view of the potential use of the premises.

Available from September 2024 "asi is".

**Office space**

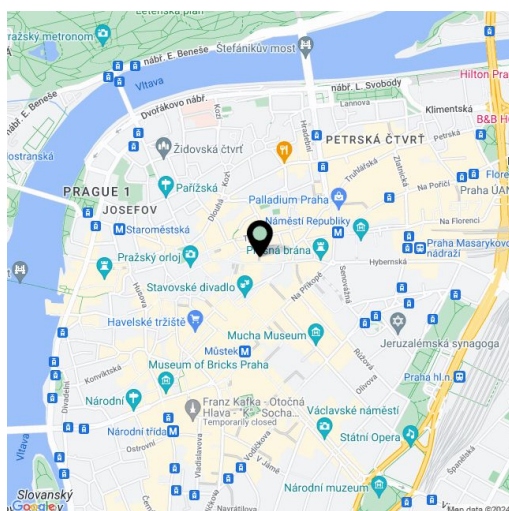
Prague 1, Staré Město, Celetná

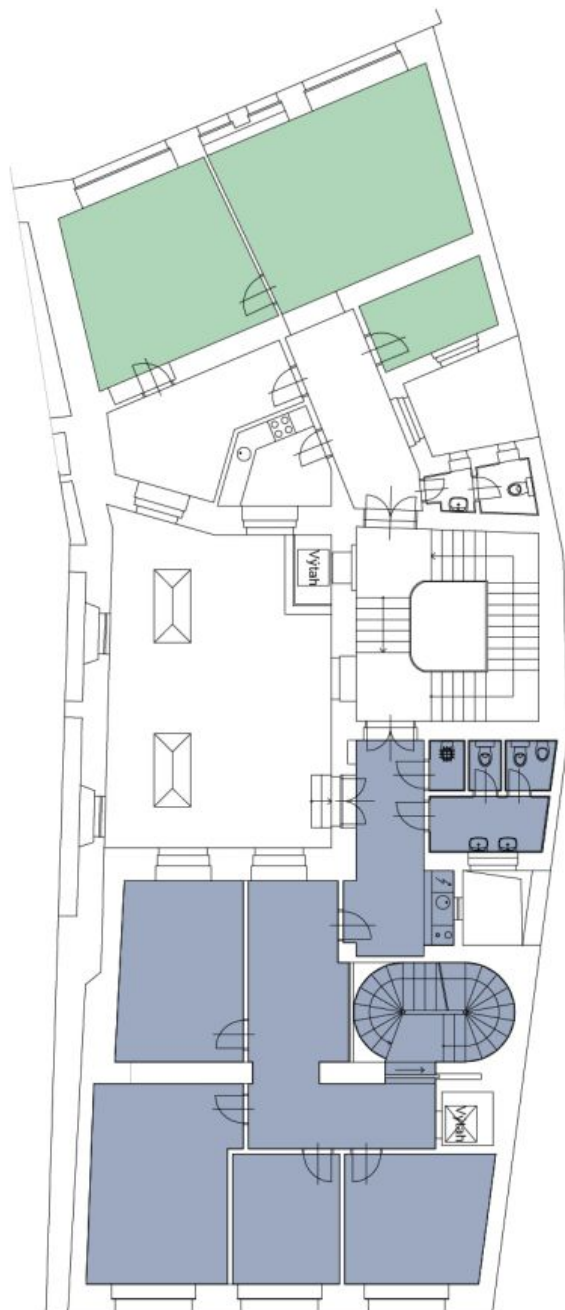
€ 12.50 / m² | CZK 315 / m²

Available area	126 m ²
Cellar	-
Parking	-
PENB	G
Reference number	104860

UNDER OFFER.

Rental and service charges listed without VAT. Lessee pays no commission.





- Kancelář (Ovocný trh)
- Kancelář | Obchodní prostor (Celetná)

Ovocný trh 15 | Celetná 30

2.NP | 1. patro