

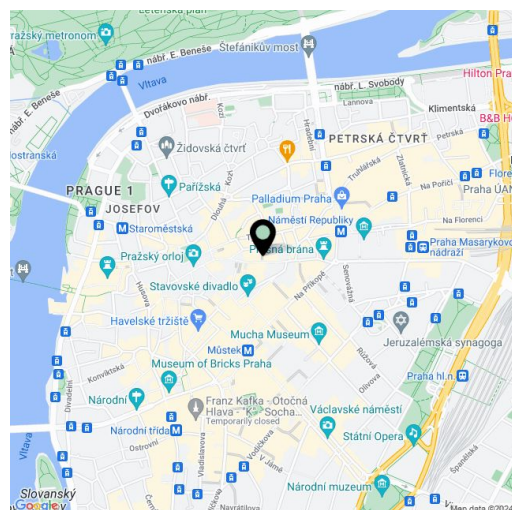


Retail space

Prague 1, Staré Město, Celetná

[Ask for price](#)

Available area	416 m ²
Parking	-
PENB	Not required
Reference number	104896



Exclusive opportunity to lease of outstanding parameters located in one of the most attractive tourist addresses in Prague.

The retail space is located in Celetná Street, which is one of the most popular streets in the historical centre of Prague with an excellent location and **high business potential**. The street is part of the Královská ceta, which connects the Prašná brána and Old Town Square. This street is **highly frequented by tourists and locals** looking for a wide range of quality shops, restaurants and cafes.

In the immediate vicinity there are many cultural monuments, major buildings, restaurants, cafes, and shops. The Staroměstská (line A), Můstek (line A, B) and Náměstí Republiky (line B) metro stations are within walking distance.

In addition to the **retail space on the ground floor (290 sq. m)**, there is an **office space on the 1st floor with an area of 125.9 sq. m** connected by a staircase and elevator, and **storage space on the 1st underground floor (102.77 sq. m) and 2nd underground floor (47.77 sq. m)**.

Features and Services:

- Shop windows, large windows, high ceilings
- Elevator in the office and residential part of the building
- Private elevator and staircase in the commercial unit
- Possibility to build a garden in the courtyard
- Balcony towards the courtyard in the office part
- Toilets and kitchenette on each floor
- Shower and closet on the first underground floor
- Fiber-optic cable

Photos of the non-residential premises used in this presentation have been edited post-production to give a more accurate view of the potential use of the premises.

Rental and service charges listed without VAT.



Retail space

Prague 1, Staré Město, Celetná

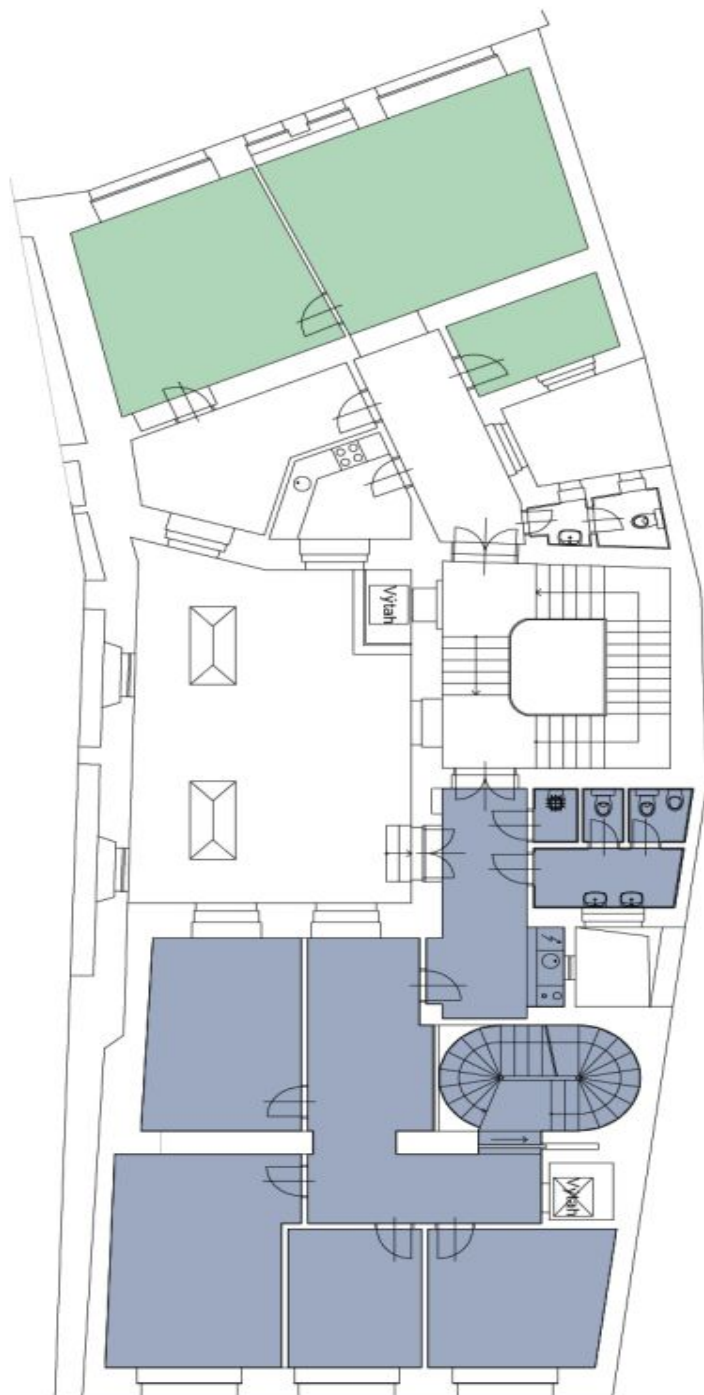
Ask for price



Obchodní prostor (Ovocný trh)
Obchodní prostor (Celetná)

Ovocný trh 15 | Celetná 30

1.NP | Přízemí



- Kancelář (Ovocný trh)
- Kancelář | Obchodní prostor (Celetná)

Ovocný trh 15 | Celetná 30

2.NP | 1. patro



Retail space

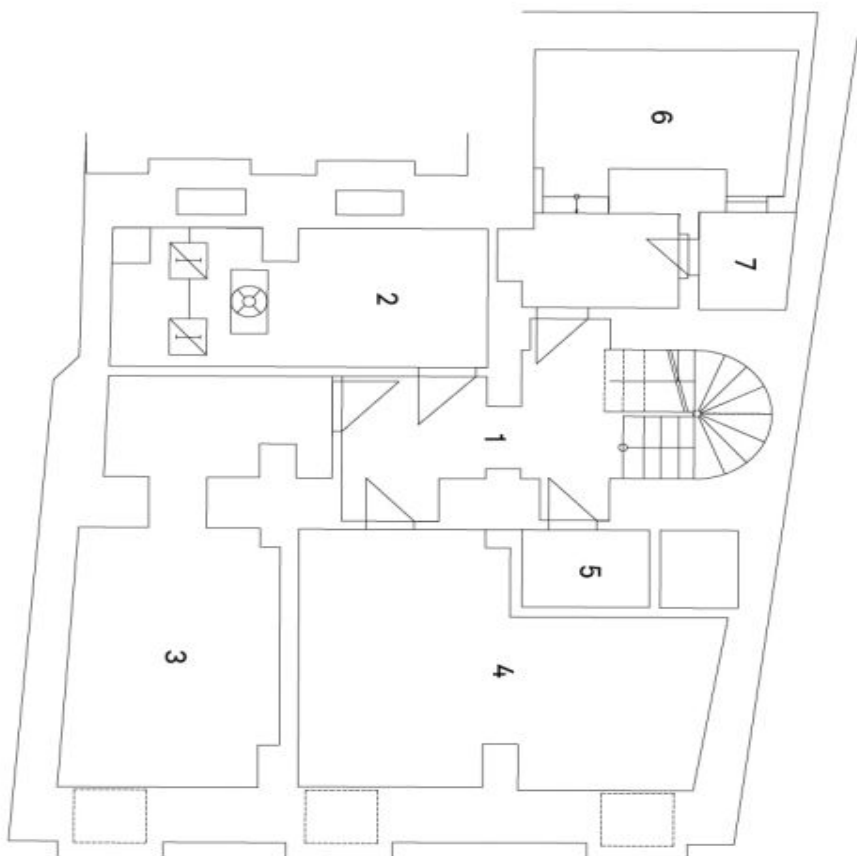
Prague 1, Staré Město, Celetná

Ask for price

Ovocný trh 15 | Celetná 30

2.PP | 2. suterén

- 1 Chodba
- 2 VZT
- 3 Archiv
- 4 Archiv
- 5 Stojovna výtahu
- 6 Kotelna
- 7 Světlik





Ovocný trh 15 | Celetná 30

1.PP | 1. suterén

- | | |
|----|------------|
| 1 | Schodiště |
| 2 | Šatna |
| 3 | Sklad |
| 4 | Sklad |
| 5 | Sklad |
| 6 | Chodba |
| 7 | Sprcha |
| 8 | Předsíň |
| 9 | WC |
| 10 | Úklid |
| 11 | Předsíň |
| 12 | Chodba |
| 13 | Sklep |
| 14 | Sklad |
| 15 | Sklep |
| 16 | Sklep byty |

