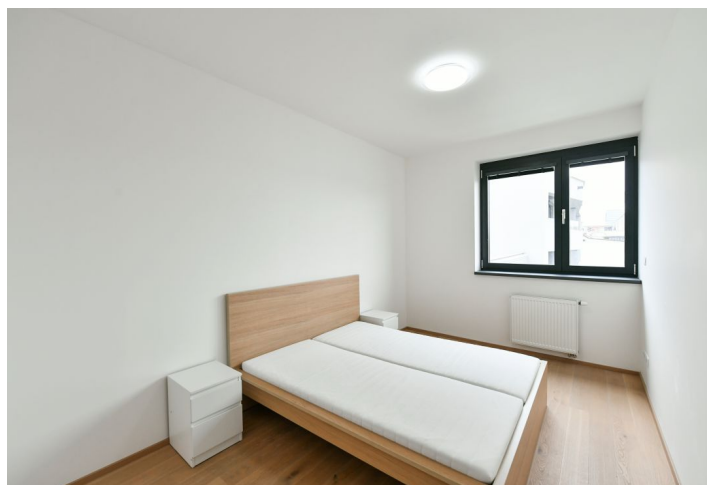
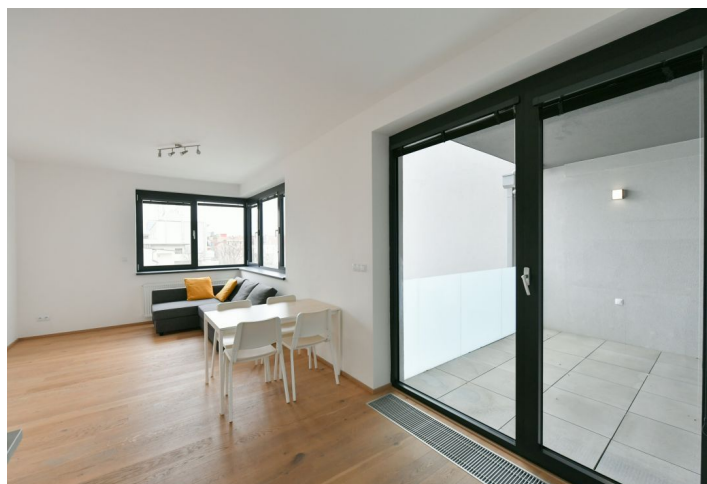




Apartment One-bedroom (2+kk)

Sold

51.7 m², Prague 7, Holešovice, Dělnická





Apartment One-bedroom (2+kk)

Sold51.7 m², Prague 7, Holešovice, Dělnická

| | |
|------------------|----------------------|
| Total area | 60 m ² |
| Floor area* | 52 m ² |
| Terrace | 9 m ² |
| Parking | Garage parking space |
| Garage | Yes |
| Cellar | 8 m ² |
| PENB | B |
| Reference number | 104897 |

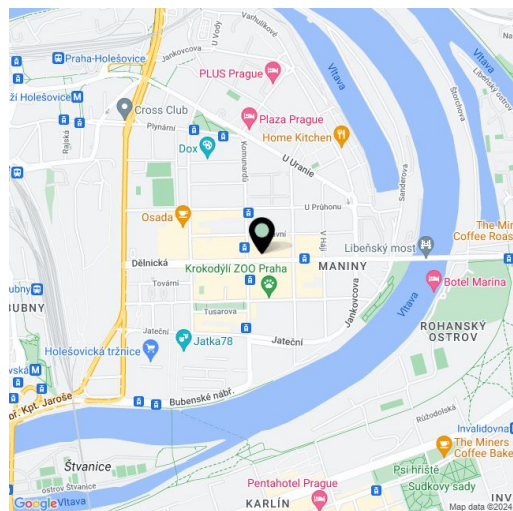
This modern apartment with a terrace is located on the 5th floor of the Vivus Osadní residential project with an elevator, a green courtyard, and an underground garage, where 1 parking space is reserved for the apartment. The residence was completed in 2019 in the popular district of Holešovice with a lively atmosphere, a full range of services, and easy connections to the city center.

The area of the apartment consists of a living room with a kitchen and access to the **terrace**, 1 bedroom, a bathroom with a bathtub and a shower screen, a separate toilet, and an entrance hall.

Facilities include **wooden floors**, large plastic windows with double glazing and interior blinds, central district heating, and a safety fire entrance door. The kitchen is fully equipped with **built-in white appliances**. The purchase price includes a **garage space** and a **cellar**. A **pram room** is available to residents.

It is close to cafes, restaurants, shops, pharmacies, or a library, the multi-functional **Vnitroblok** center, the **DOX** Center for Contemporary Art and the **La Fabrika** and **Jatka 78** theaters. The **Czech Philharmonic concert hall** will be built nearby. Excellent accessibility is ensured by tram connections to the city center and to the **Nádraží Holešovice** and **Vltavská** metro stations. The **expressway to the airport** will also be within reach. A **new footbridge to Karlín** serves pedestrians and cyclists.

Floor area 51.7 m², terrace 8.7 m², cellar 7.5 m².



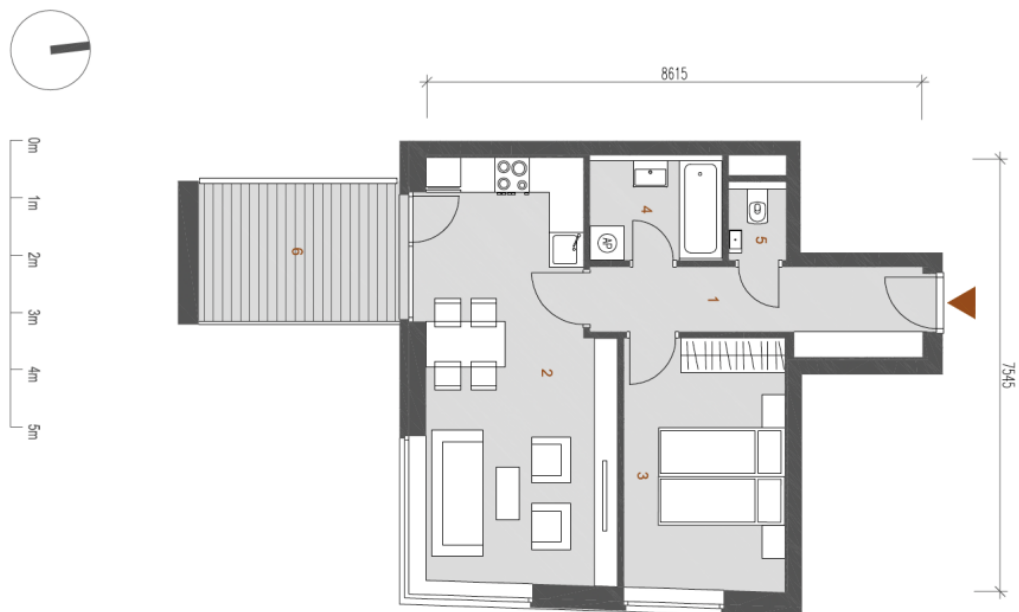
* Area of the unit according to the Civil Code. The area consists of the sum total area of the entire unit bounded by perimeter walls.



Apartment One-bedroom (2+kk)

Sold

51.7 m², Prague 7, Holešovice, Dělnická



| | | |
|-------------------------|--------------------|---------------------|
| 1 | Chodba | 7,96m ² |
| 2 | Obývací pokoj + kk | 23,08m ² |
| 3 | Ložnice | 12,05m ² |
| 4 | Koupelna | 4,10m ² |
| 5 | WC | 1,42m ² |
| Plocha místností celkem | | 48,61m ² |
| Ostatní plochy | | 3,06m ² |
| *Plocha bytu celkem | | 51,67m ² |
| 6 | Balkon | 8,69m ² |