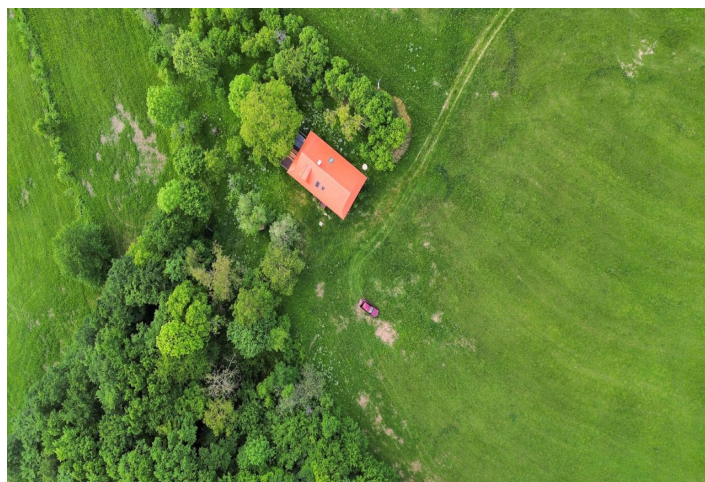




## House Four-bedroom (5+kk)

Ask for price

165 m<sup>2</sup>, Bošáca, Nové Mesto nad Váhom





## House Four-bedroom (5+kk)

[Ask for price](#)165 m<sup>2</sup>, Bošáca, Nové Mesto nad Váhom

Total area	165 m <sup>2</sup>
Plot	2 682 m <sup>2</sup>
Foot print	120 m <sup>2</sup>
Floor area	132 m <sup>2</sup>
Terrace	33 m <sup>2</sup>
Parking	Yes
Cellar	-
PENB	G
Reference number	104996

**Exclusive two-story premium log cabin for sale with a large terrace and a Jacuzzi in Kopanice near Bošác. The offer includes a large, south-facing plot of land located in the heart of nature, good access, and wonderful views.**

The ground floor of the log cabin consists of a spacious entrance hall, a living room with a **double-sided fireplace** and stove, a dining area, an equipped kitchen with a pantry, and a bathroom with a shower and toilet. The living room has access to a **terrace** with a **Jacuzzi** and **relaxation area**. A **wooden staircase** leads to the second floor, which has a common room, three separate bedrooms, and a bathroom with a **solitary bathtub** and toilet.

The log house was approved in **2022** as a family home. **Eco-materials** and **Steico** thermal insulation were used in the construction. Heating is provided by a **fireplace** and oil radiators, which can be controlled remotely **via Wi-Fi**. The house has a new electrical connection, an ECO septic tank, and a water supply provided by a 35-meter well from a **well**. The high-standard facilities are complemented by a fully equipped kitchen with built-in appliances such as a dishwasher, oven, or refrigerator with freezer, a large dining table, comfortable **wooden double beds**, wardrobes, and chests of drawers.

The **Bošáce area** is a great starting point for **lovers of exercise and nature**. This picturesque place in Kopanice offers many activities for all ages and interests. The surroundings consists of many **forests, hiking trails, and bike paths**. There are several **ski resorts** in the region, such as **Kalnica** with a **bike park**, **Bezovec**, **Veľká Javorina**, and **Stará Myjava**. The recreation centers of **Zelená voda**, **Horná Streda**, **Dubník**, and the **castles** in Beckov, Tematín, and Čachtice are nearby. It is only about 10 km away from the district town of Nové Mesto nad Váhom and the highway exit—approximately 110 km from the capital.

Parking is possible right next to the house. Total usable area 165 m<sup>2</sup>.

