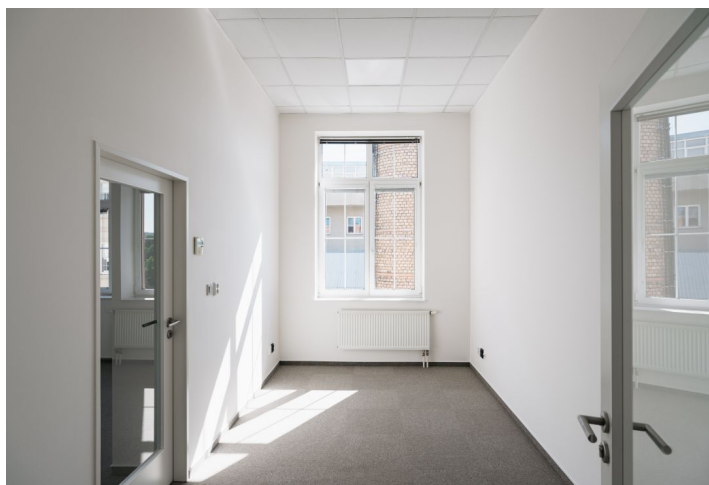




Office space

Prague 5, Smíchov, Nádražní

€ 16.86 / m² | CZK 423 / m²





Office space

Prague 5, Smíchov, Nádražní

€ 16.86 / m² | CZK 423 / m²

Service price	20 820 CZK monthly
Available area	100 m ²
Cellar	-
Parking	Yes
PENB	Not required
Reference number	105024

Modern office space for lease on the 1st floor in Prague's Smichov district situated in a newly renovated building. Available is 16 parking spaces directly at the building. The object has a central reception, security and CCTV system. Offices have openable windows and air condition. For tenants there is a shower room, a bike room and a 90 sq. m terrace on the top floor - an ideal place for relaxation or informal meetings.

Location:

Perfect access to the metro station Smíchovské nádraží (line B), tram stops, bus stops and the Městský okruh. In the vicinity is a shopping centre Nový Smíchov, many restaurants, cafes, shops and services.

Features and Services:

- Parking
- Central reception
- Security
- Openable windows
- Air condition
- Elevator
- Shower
- Bike room
- CCTV system
- Terrace 90 sq. m
- Shared meeting rooms

Rental and service charges listed without VAT. Lessee pays no commission.

