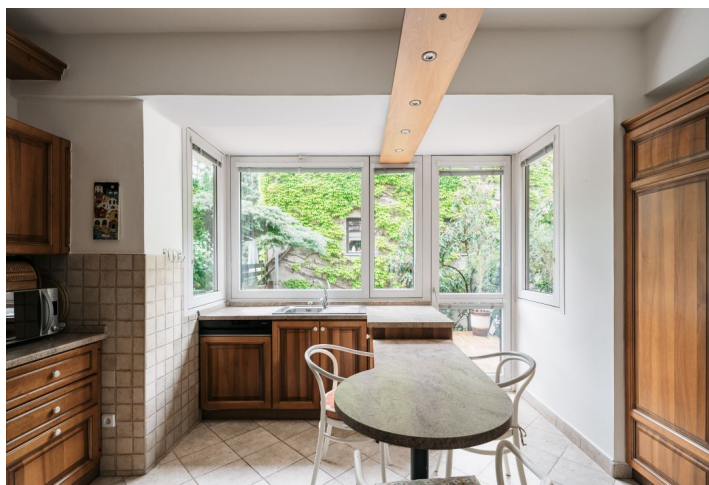




Apartment Two-bedroom (3+1)

Rented

125 m², Prague 4, Krč, Nad svahem





Apartment Two-bedroom (3+1)

Rented

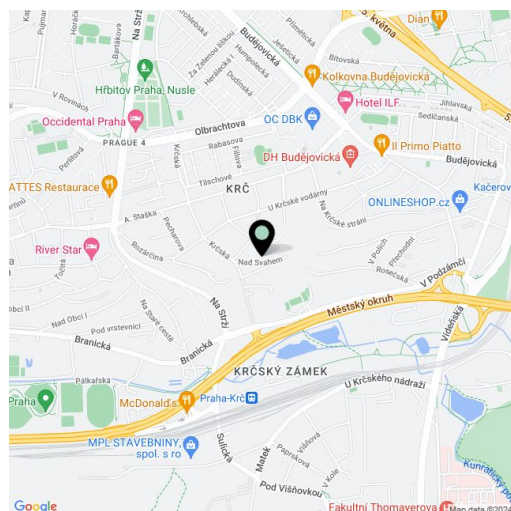
125 m², Prague 4, Krč, Nad svahem

Total area	158 m ²
Floor area*	125 m ²
Balcony	19 m ²
Terrace	14 m ²
Parking	Garage parking and parking on the plot.
Garage	Yes
Cellar	-
Service price	Monthly deposit for services, utilities, and Internet: CZK 7,500.
PENB	E
Reference number	105027
Available from	Immediately

Benefiting from 2 terraces, this semi-furnished apartment is situated on the ground floor of a freestanding house on a quiet street in a residential part of Krč, Prague 4, in the immediate vicinity of Habrovka Park. A green location with full amenities within easy reach and good transportation connections, convenient for the Southern Section of the Prague Ring Road, near the Prague 4 business and commercial center, in close vicinity of the Budějovická metro station (one bus stop away or a 10 min. walk).

The apartment features a 45 m² living room with a fireplace and terrace offering green views, a fully fitted kitchen with a dining area and a terrace, and 2 bedrooms (one with a fitted walk-in closet). There is also a bathroom (walk-in shower, toilet), a guest toilet, and an entrance hall with built-in wardrobes.

Hardwood floors, tiles, central gas heating, dishwasher. A garage parking space and an outdoor parking space on the plot are available. The apartment can be unfurnished.



* Size of the unit according to the Housing Act.
The area consists of the sum total of the internal area of every room.