



Industrial space

920 m², Brno, Maloměřice, Hády

Ask for price





Industrial space

920 m², Brno, Maloměřice, Hády

Ask for price

Total area	920 m ²
Ceiling height	—
Floor loading capacity	—
Column grid structure	—
Structure	—
PENB	A
Reference number	105111

Brick heated industrial/warehouse space for lease with an area of 920 sq. m in a commercial area of 19 000 sq. m, located on Hády Street in Brno Maloměřice. The advantage is the possibility of parking for up to 300 cars and a handling paved area within the premises, which allows entry and parking of cars and trucks.

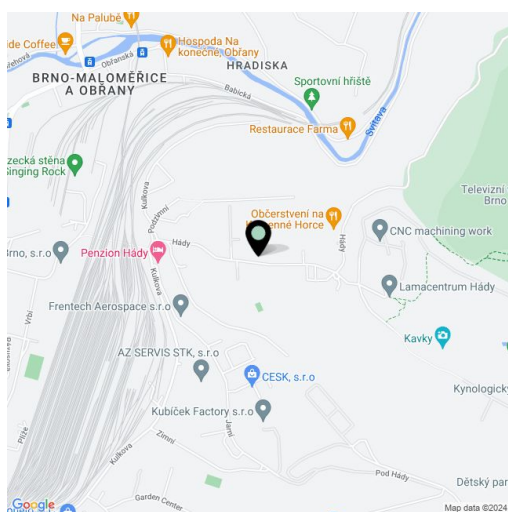
Location:

Excellent transport accessibility by car and public transport. The Červený Písek bus stop is right in front of the complex. The city center is about 17 minutes away by car.

Features and Services:

- 24/7 security
- Camera system
- Heating
- Wheelchair access
- Parking
- Fire detectors

Rental and service charges listed without VAT. Lessee pays no commission.

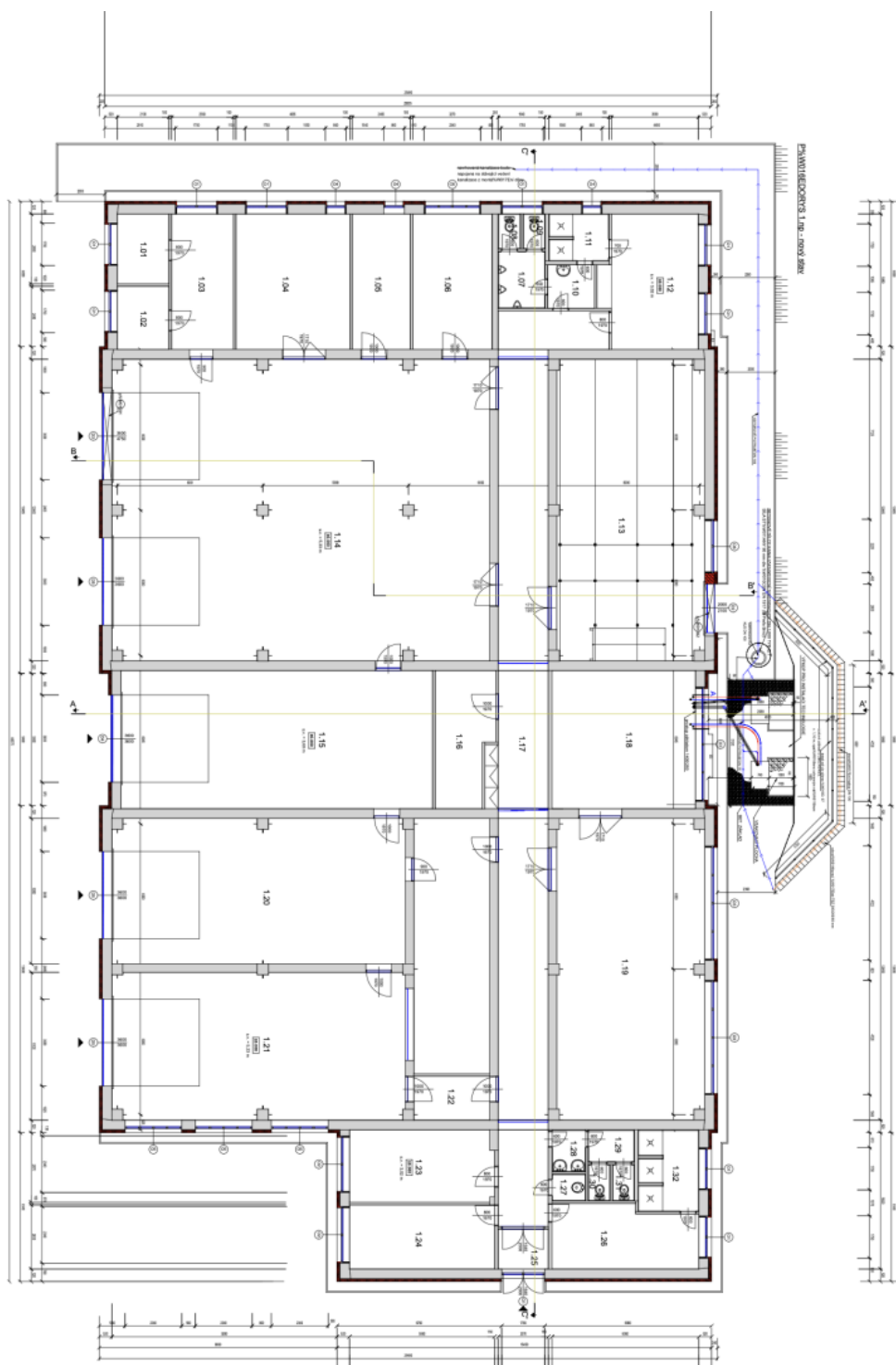




Industrial space

920 m², Brno, Maloměřice, Hády

Ask for price





Industrial space

920 m², Brno, Maloměřice, Hády

Ask for price

