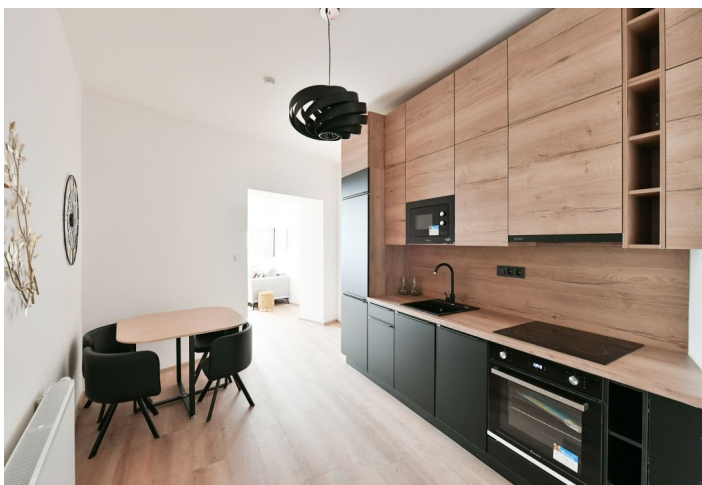
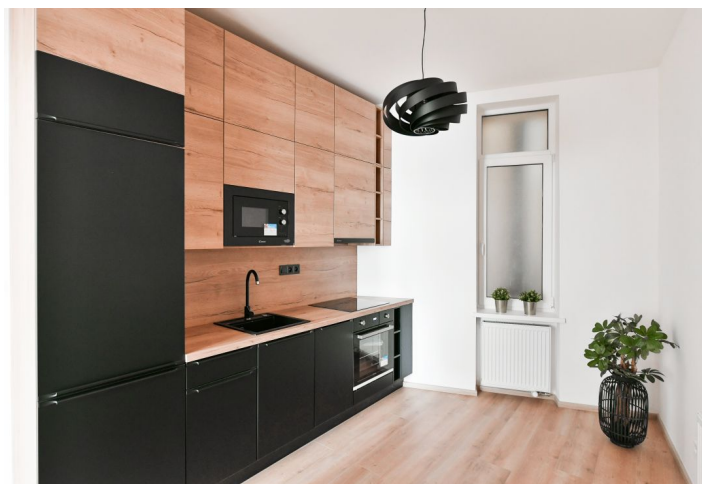




Apartment Studio (1+1)

38 m², Praha 4, Podolí, Sinkulova

Rented





Apartment Studio (1+1)

Rented

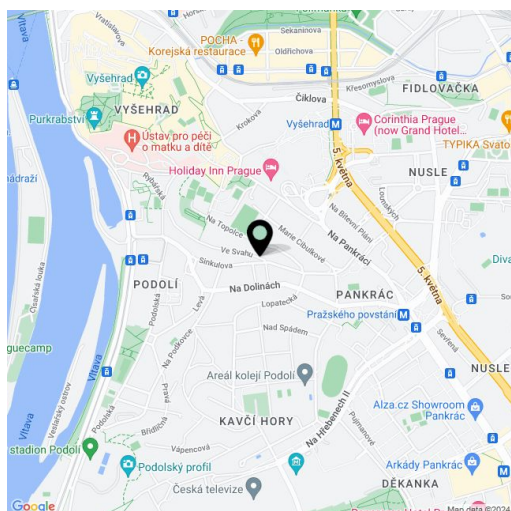
38 m², Praha 4, Podolí, Sinkulova

Total area	38 m ²
Parking	Garage parking is available (subject to availability).
Garage	Yes
Cellar	-
Service price	Monthly deposit for service charges, water and heating: CZK 4,553. Electricity is billed separately (transfer to the tenant).
PENB	D
Reference number	105255
Available from	Immediately

This is a completely refurbished and fully furnished apartment on the first floor in a newly renovated apartment building - a modern residence with a lift. Located in a popular green residential neighborhood of Podolí near the Vltava river, Podolí embankment and the Vyšehrad Castle, moments from a tram and bus stop. Complete amenities and services are available within easy reach including numerous sports facilities, e.g. Podolí and Žluté lázně swimming pools, and a popular bike trail along the Vltava river.

The interior features a living room / bedroom, a fully fitted kitchen, a bathroom with a bathtub and a toilet, and an entrance hall with a fitted walk-in closet.

Laminated floors, tiles, sofa bed, central heating, dishwasher, electric oven, microwave oven. **Garage parking** is available at an extra cost.



* Size of the unit according to the Housing Act.

The area consists of the sum total of the internal area of every room.