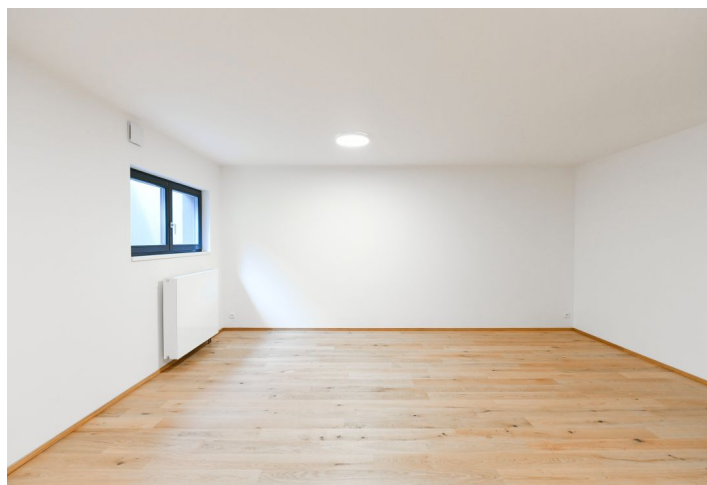




## House Five-bedroom (6+kk)

€ 2 866 | CZK 72 000

271 m<sup>2</sup>, Prague 5, Jinonice, Nad Kačním





## House Five-bedroom (6+kk)

€ 2 866 | CZK 72 000

271 m<sup>2</sup>, Prague 5, Jinonice, Nad Kačním

Total area	271 m <sup>2</sup>
Plot	231 m <sup>2</sup>
Foot print	158 m <sup>2</sup>
Garden	73 m <sup>2</sup>
Floor area	258 m <sup>2</sup>
Terrace	13 m <sup>2</sup>
Parking	Parking in the garage + 2 outside parking spaces on the plot.
Garage	Yes
Cellar	Yes
Service price	Deposit for charges (water, garbage) CZK 3,000/month. Gas and electricity - transferred to the tenant.
PENB	B
Reference number	105309
Available from	Immediately

This brand-new townhouse with a garden, situated in a residential part of Jinonice, just steps from the Prokopské and Dalejské Valley nature parks, near the German and Waldorf Schools, is located in a quiet area within easy reach of the Jinonice and Nové Butovice metro stations, in close vicinity of the Galerie Butovice shopping mall, within walking distance of several kindergartens.

The ground floor offers a living room with a fully equipped kitchen and dining area with access to the terrace and garden, an entry hall with built-in wardrobes and an entrance to the garage, a storage/laundry room, and a separate toilet. Upstairs there are 3 separate bedrooms, a bathroom with a bathtub and toilet, a small closet, and a master bedroom with built-in wardrobes and access to the terrace and an en-suite bathroom with a shower and toilet. In the basement is another guest bedroom with an en-suite bathroom with a shower and toilet, a boiler room, and storage space.

Wooden floors and tiles, underfloor heating, gas boiler and heat pump, electrically controlled window blinds, dishwasher, induction hob, microwave oven, videophone. Parking in the garage and two more parking spaces on the plot.

