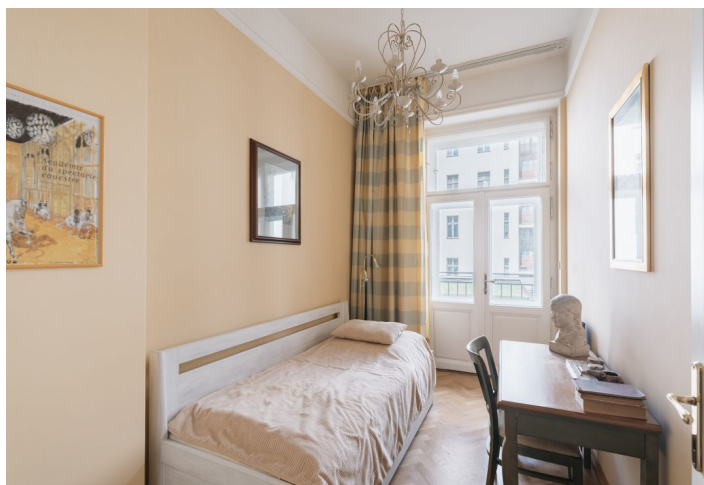
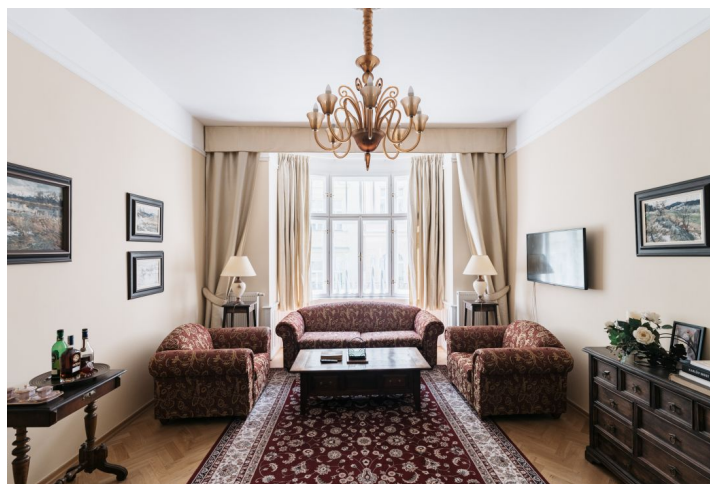




Apartment Two-bedroom (3+1)

€ 708 350 | CZK 17 900 000

67.15 m², Prague 1, Staré Město, Bílkova





Apartment Two-bedroom (3+1)

€ 708 350 | CZK 17 900 000

67.15 m², Prague 1, Staré Město, Bílkova

Total area	69 m ²
Floor area*	67 m ²
Balcony	2 m ²
Parking	Garage parking space
Garage	Yes
Cellar	-
PENB	G
Reference number	105315

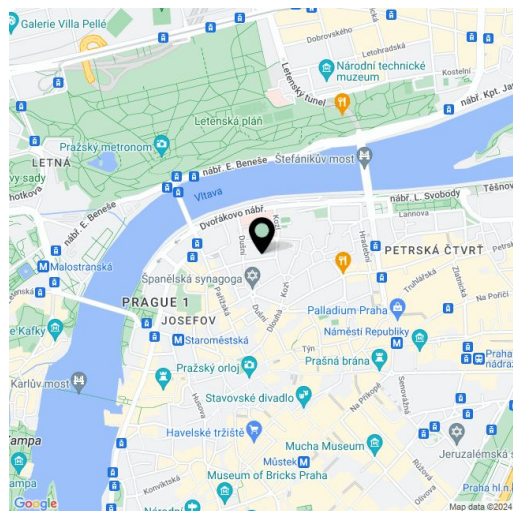
This elegant apartment with high ceilings, a sunny bay window, and a balcony is located on the 1st floor of a completely renovated Art Nouveau building with a reception, elevator, and underground garage, where 1 space is reserved for the apartment. The building with a nicely decorated facade stands in the very heart of Old Town, in a place with a long history of settlement, which gives the area a unique atmosphere.

The layout consists of a living room with a dining area and adjoining kitchen, 2 bedrooms, a bathroom (with a bathtub and toilet), and an entrance hall. One bedroom has access to a balcony facing the courtyard, and the living room is decorated with a bay window facing south towards the street. Both bedrooms face north, ideal for hot summer days.

Floors are refurbished parquets; windows are wooden casement. The custom-made kitchen is equipped with Miele appliances, and built-in wardrobes provide plenty of storage space. Heating is provided by a gas boiler. The building is very well maintained, with a reception and an underground garage accessible by elevator. A garage space is already included in the purchase price.

The location, with a confirmed settlement as early as the 12th century, stands out for its architecture with many churches and synagogues. Its dominant feature is the St. Agnes Convent lined with landscaped gardens. There are many restaurants, clubs, cafes, and shops in the vicinity, and the contrast to the narrow winding streets is nearby luxurious Pařížská Street. However, there are also services for everyday life nearby - a kindergarten and elementary school, a bakery, grocery stores, or medical services. Other parts of the city can be reached by tram from a nearby stop or by metro from the Staroměstská station.

Floor area 67.15 m², balcony 2.2 m².



* Area of the unit according to the Civil Code. The area consists of the sum total area of the entire unit bounded by perimeter walls.



Apartment Two-bedroom (3+1)

€ 708 350 | CZK 17 900 000

67.15 m², Prague 1, Staré Město, Bílkova

