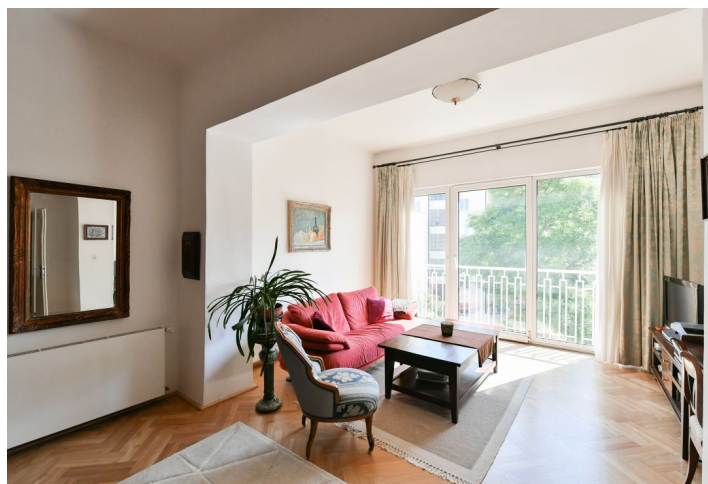




Apartment Two-bedroom (3+kk)

€ 1 521 | CZK 38 500

101 m², Prague 2, Vinohrady, Belgická





Apartment Two-bedroom (3+kk)

€ 1 521 | CZK 38 500

101 m², Prague 2, Vinohrady, Belgická

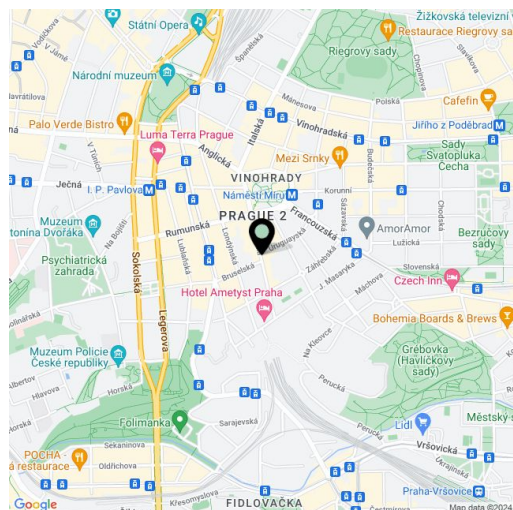
Total area	101 m ²
Parking	-
Cellar	-
Service price	Monthly deposit for common building charges and water CZK 2,500. Electricity and gas are billed separately.
PENB	E
Reference number	105376
Available from	Immediately

This is an unfurnished renovated 2-bedroom apartment on the third floor of a refurbished residential building with a lift.

Located on a quiet tree-lined street in an attractive residential area in Prague 2 - Vinohrady, just a few min. walk from the Náměstí Míru and I.P. Pavlova metro stations and tram stops. A highly sought-after location within easy reach of the city center and with full amenities near by, within walking distance of the Gröbovka, Riegrovy Sady and Folimanka parks.

The interior features a living room with a fully fitted open plan kitchen and French windows overlooking a quiet courtyard garden, two bedrooms, a bathroom with a bathtub and a toilet, an additional guest toilet, and an entrance hall with a large built-in wardrobe.

Solid wood parquet floors, tiles, triple glazed windows, gas boiler, washing machine, dishwasher, kitchenware, TV.



* Size of the unit according to the Housing Act.

The area consists of the sum total of the internal area of every room.