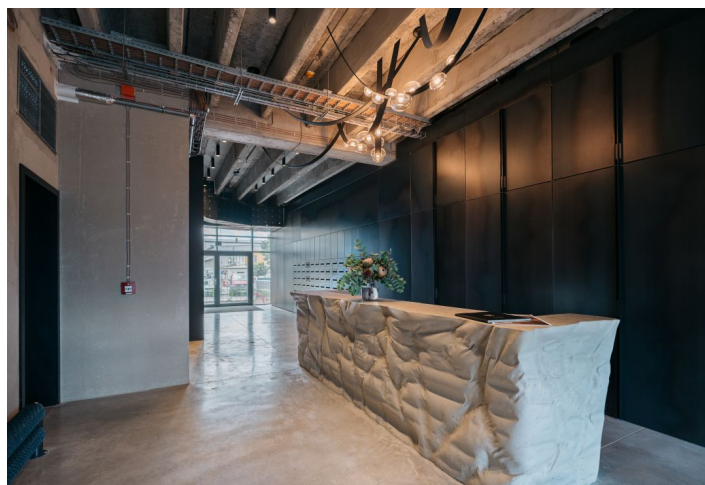




Apartment One-bedroom (2+kk)

€ 315 374 | CZK 7 990 000

50.6 m², Praha 4, Modřany, Československého exilu





Apartment One-bedroom (2+kk)

€ 315 374 | CZK 7 990 000

50.6 m², Praha 4, Modřany, Československého exilu

Total area	51 m ²
Garden	25 m ²
Parking	Possibility to purchase a garage parking space
Cellar	-
PENB	B
Reference number	105522

This stylish loft apartment with variable use, its own entrance, and front garden is located on the ground floor of the unique Vanguard Prague project. Just a few steps to the golf course in Hodkovičky and the popular fitness trail along the river.

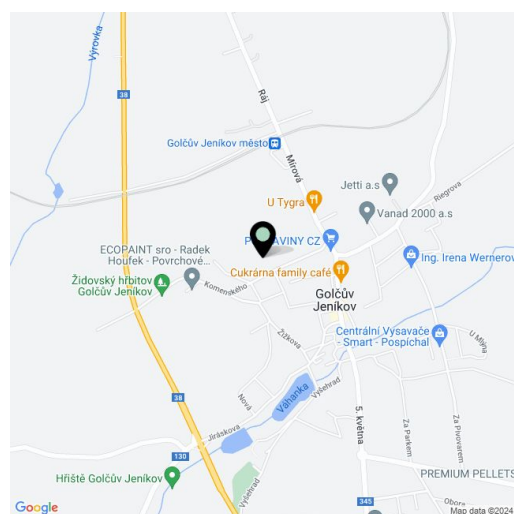
The space with a **ceiling height of up to 372 cm** is an open **shell & core** area. It thus provides the opportunity to be finished according to **your taste** and needs not only of final surfaces, but also of layouts. The ceiling height enables the convenient construction of **an upper landing** and the possibility of increasing the total usable area by **another 25 m²**. Once completed, you can approve the loft as an apartment. **Possibility to purchase a garage parking space.** Right of pre-emption for a place at a price of CZK 399,000.

The originally industrial building has been given a modern look for residential living under the leadership of **Ing. arch. Petr Drexler**. Completion of the building to a high standard includes a glazed facade, fire safety entrance doors and videophones, fire resistant glazed partitions, masonry, acoustically doubled partitions between units, a preparation for exterior blinds, air-conditioning, and a heat recovery unit. Common areas include **an entrance lobby with a reception** and concierge services, a pool in the form of an aquarium, **a wellness/spa zone, fitness room, a meeting room, or a laundry room.**

The place is set near the **golf course in Hodkovičky** and the popular **fitness trail** along the river, within easy reach of everything you need. The entire area, which in recent years has undergone a successful transformation from an industrial suburb to a modern district with landscaped greenery and with a complete infrastructure, is located near the city center. It only takes a few minutes to reach a **kindergarten and elementary school**, the Austrian high school, the Modřany Classical High School, the Prague British International School, supermarkets, and other shops. There is a **car dealership** and a gas station right next to the building, **a private medical center, a cafe**, and especially many sports grounds, including a golf course, within walking distance.

Floor area 50.6 m², private garden 25 m².

Sale through the assignment of a future contract.



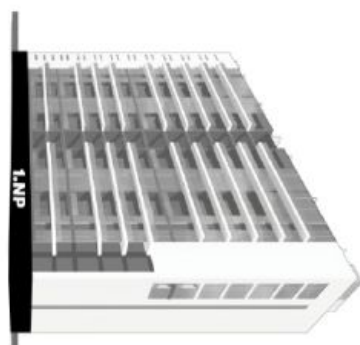
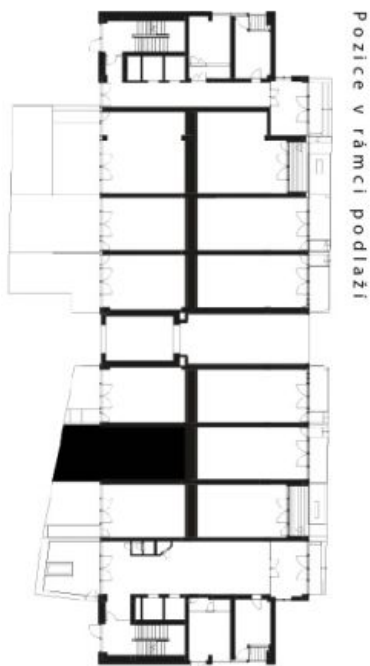
* Area of the unit according to the Civil Code. The area consists of the sum total area of the entire unit bounded by perimeter walls.



Apartment One-bedroom (2+kk)

€ 315 374 | CZK 7 990 000

50.6 m², Praha 4, Modřany, Československého exilu

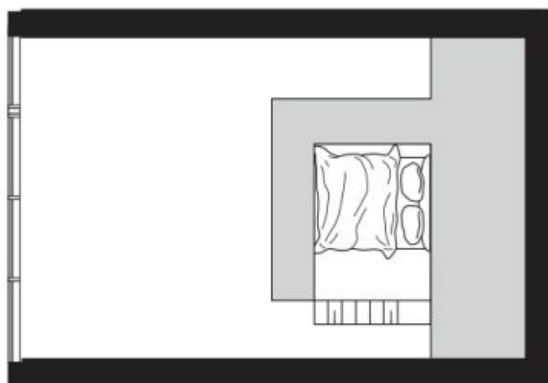


Pozice v rámci budovy

Světla výška jednotky – mezi žebro
Světla výška jednotky – pod žebro
Podlahová plocha
Privátní zahrada
Orientace

4,12 m
3,72 m
50 m²
24,49 m²
J

Loft 102 - CUBE
1.NP





Apartment One-bedroom (2+kk)

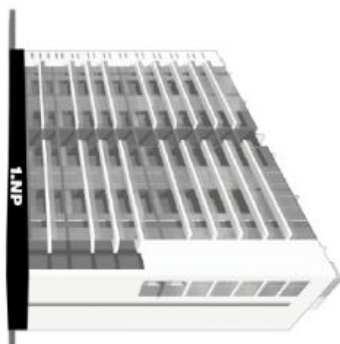
50.6 m², Praha 4, Modřany, Československého exilu

€ 315 374 | CZK 7 990 000

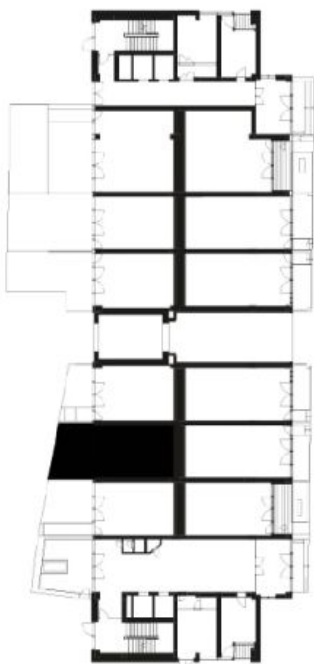
Loft 102 - Shell&Core 1.NP

Světla výška jednotky - mezi žebro	4,12 m
Světla výška jednotky - pod žebro	3,72 m
Podlahová plocha	50,6 m ²
Předzahrádka	24,5 m ²
Celková plocha	75,1 m ²
Orientace	J

Pozice v rámci budovy



Pozice v rámci podlaží



Stav při předání: Shell&Core

