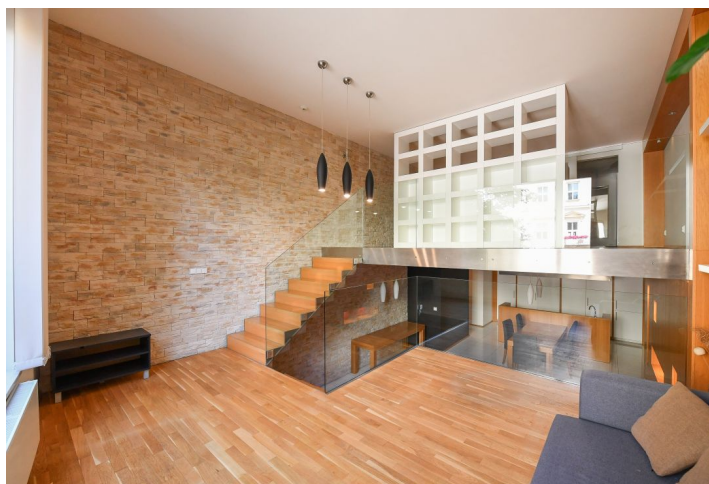




## Apartment One-bedroom (2+kk)

Rented

104 m<sup>2</sup>, Prague 1, Nové Město, Senovážné náměstí





## Apartment One-bedroom (2+kk)

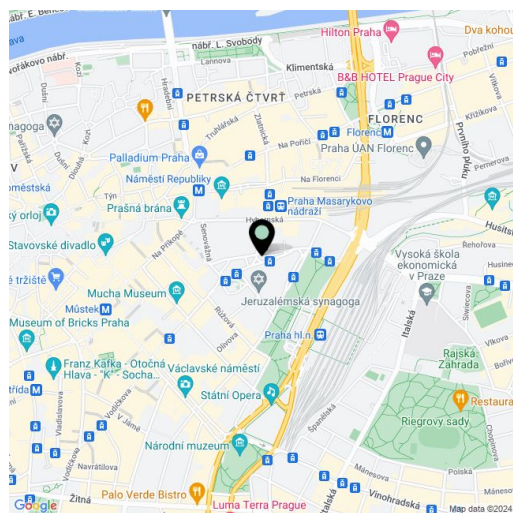
**Rented**104 m<sup>2</sup>, Prague 1, Nové Město, Senovážné náměstí

Total area	104 m <sup>2</sup>
Parking	Garage parking.
Garage	Yes
Cellar	Yes
Service price	Monthly deposit for services, water, and heating: CZK 8,000. Electricity and the Internet are billed separately (transferred to the tenant).
PENB	C
Reference number	105529
Available from	Immediately

This atypical fully furnished three-level apartment is on the ground floor of the Belwitz Palace modern residence—a refurbished 19th century palace with an elevator, 24/7 reception, security, and parking. Centrally located just moments from Prague's Main Railway Station, the Masaryk Railway Station, and a tram stop, a few min. walk from Wenceslas Square with all three Prague metro lines, and full amenities in the area. Just a short walk from the historic center with numerous sights and historic monuments, cultural venues, and quality shops, cafes, and restaurants.

The airy interior features a living room with a fully fitted open plan kitchen that can be partially closed off, plus a **walk-in closet**, a toilet, and an entrance hall. Several steps lead to another living area with a dining space and views of a nicely landscaped courtyard garden belonging to the neighboring hotel. There is another gallery a few steps higher, consisting of a bedroom, a **walk-in closet**, and an en-suite bathroom (bathtub, bidet, toilet).

**Hardwood floors**, tiles, central heating, underfloor heating in the bathroom, washer, dryer, dishwasher, induction stove top, alarm, video entry phone, **cellar**, shared laundry room for two neighboring apartments. An on-site **garage parking** space is available at CZK 3,000/month.



\* Size of the unit according to the Housing Act.

The area consists of the sum total of the internal area of every room.