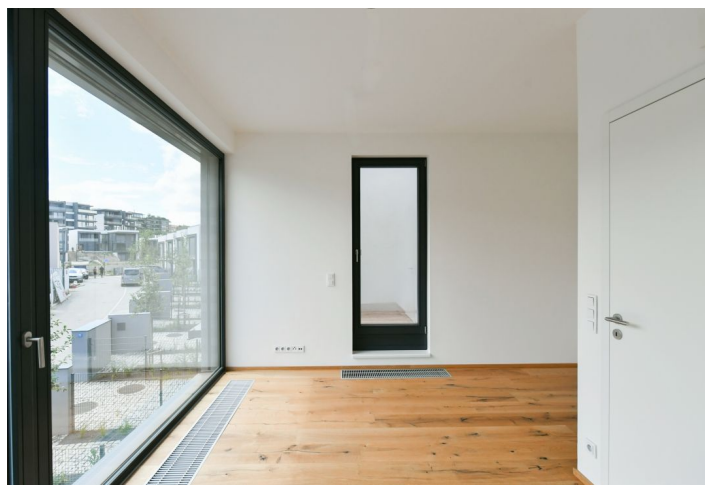
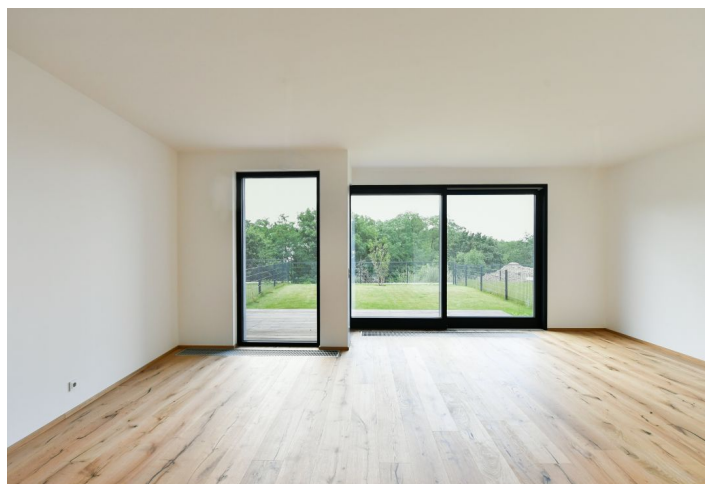




House Three-bedroom (4+kk)

Rented

194 m², Praha 5, Košíře, Krejčova





House Three-bedroom (4+kk)

Rented

194 m², Praha 5, Košíře, Krejčova

Plot	224 m ²
Foot print	132 m ²
Garden	92 m ²
Parking	Garage parking.
Garage	Yes
Cellar	-
Service price	Utilities are billed separately.
PENB	B
Reference number	105548
Available from	Immediately

This brand new, good quality unfurnished 2-bathroom townhouse with a garden, part of the Top Residence Pomezí residential project, is set on a quiet street in Prague Košíře, on a hill offering pretty panoramic views of the city. Located near the Cibulka forest park and the Vidoule nature preserve, within easy reach of amenities and services, with quick access to the German School and Jinonice metro station, and with quick connections to the Nový Smíchov shopping and entertainment zone, the Anděl metro station, and the French School.

The ground floor features a master bedroom with built-in wardrobes and an en-suite bathroom (walk-in shower, toilet), an entrance hall with built-in wardrobes, and garage access. The lower ground floor includes a living room with a fully fitted open plan kitchen and access to the **terrace/garden**, a large storage room with built-in wardrobes, a utility room, and a toilet. The upper floor offers a bedroom with a **terrace**, a third bedroom, a bathroom (bathtub), and a separate toilet.

Hardwood floors, tiles, automatic exterior blinds, gas boiler. A single **garage** is available.

