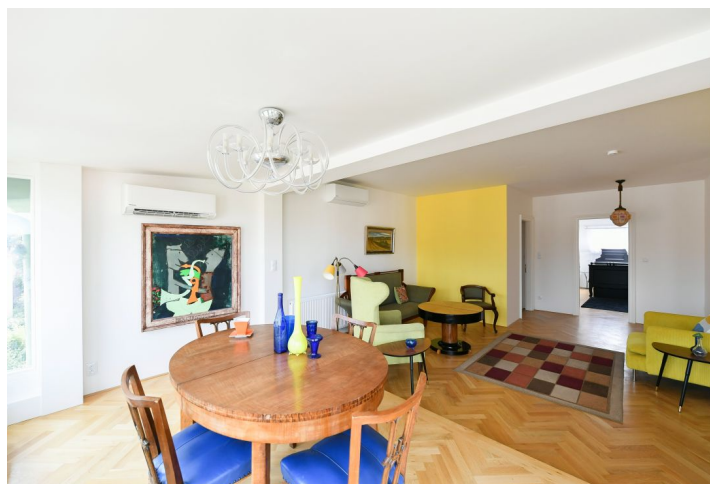




Apartment Three-bedroom (4+kk)

Rented

151.8 m², Prague 7, Bubeneč, Šmeralova





Apartment Three-bedroom (4+kk)

Rented

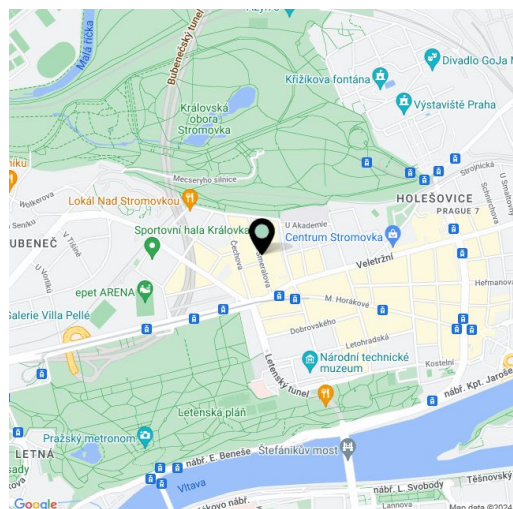
151.8 m², Prague 7, Bubeneč, Šmeralova

Total area	162 m ²
Floor area*	152 m ²
Balcony	10 m ²
Parking	-
Cellar	-
Service price	Monthly deposit for service charges, water, and heating: CZK 10,000. Electricity is billed separately.
PENB	Not required
Reference number	105608
Available from	Immediately

This newly refurbished and furnished air-conditioned attic apartment with 2 balconies and direct access from the elevator is on the 5th topmost floor of a completely renovated apartment building with an elevator set on a quiet street mere steps from Stromovka Park, the largest park in Prague, a 15 min. walk to the city center through another popular Prague park - Letná, and not far from the Prague Castle. This highly sought-after location offers complete amenities and very quick access to the city center - a tram stop is one minute from the building and it's a few stops to the Hradčanská (line A) and Vltavská (line C) metro stations. Conveniently located for the airport and numerous international schools.

The apartment features a living room with a fully fitted open plan kitchen and a balcony, a master bedroom with a fitted walk-in closet and an en-suite bathroom (walk-in shower, toilet), a bedroom with access to the balcony, a third bedroom, a family bathroom (bathtub with a shower screen), a separate toilet, a storage room, and an entrance hall with a built-in wardrobe.

Air-conditioning, hardwood floors, tiles, ample built-in storage, central heating, washing machine, dishwasher, induction stove top, microwave oven.



* Area of the unit according to the Civil Code. The area consists of the sum total area of the entire unit bounded by perimeter walls.