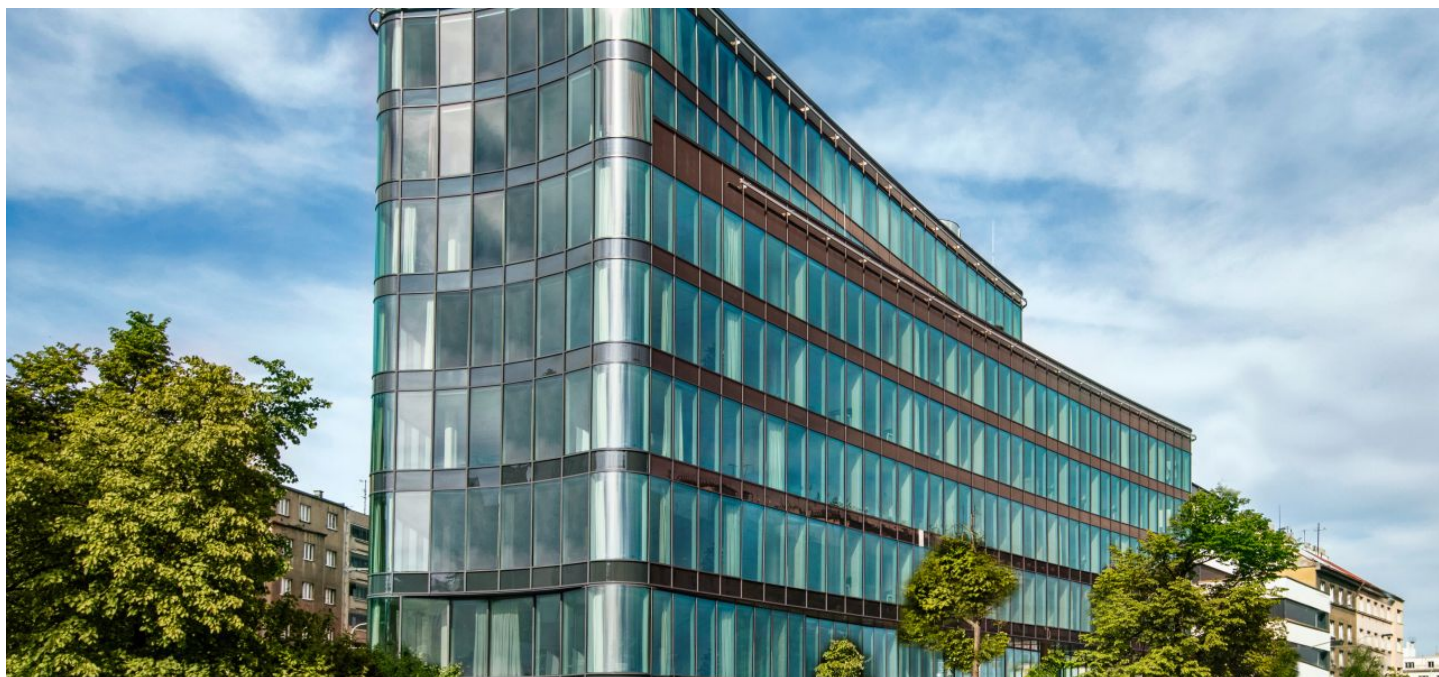




## Office building

1520 m<sup>2</sup>, Prague 5, Košíře, Vrchlického

€ 16.00 / m<sup>2</sup> | CZK 402 / m<sup>2</sup>





## Office building

1 520 m<sup>2</sup>, Prague 5, Košíře, Vrchlického

€ 16.00 / m<sup>2</sup> | CZK 402 / m<sup>2</sup>

Service price	190 CZK monthly per m <sup>2</sup>
Total building area	5 225 m <sup>2</sup>
Tenant consumption	—
Parking	Yes
Parking service charges	—
Parking ratio	—
Certification	—
PENB	B
Reference number	105614

Office space for lease in a modern office building between Plzeňská and Vrchlického streets in the Košíře district. This building has excellent transport accessibility, including fast connections to the centre of Prague and the international airport.

The building has a triangular floor plan with three basements and eight floors, including garages and technical rooms. The ground floor offers a lobby with reception, restaurant and lounges. The façade is of lightweight cladding with triple glazing.

### Location:

Fast connection to the centre of Prague and the international airport; tram and bus stops in the vicinity. The journey by car to Wenceslas Square takes a maximum of 15 minutes, while the Václav Havel Airport can be reached in 20 minutes.

### Features and Services:

- Parking
- HVAC engine room
- Cooling
- Boiler room
- Sprinkler room
- Entrance hall with reception
- Restaurant

Rental and service charges listed without VAT. Lessee pays no commission.





