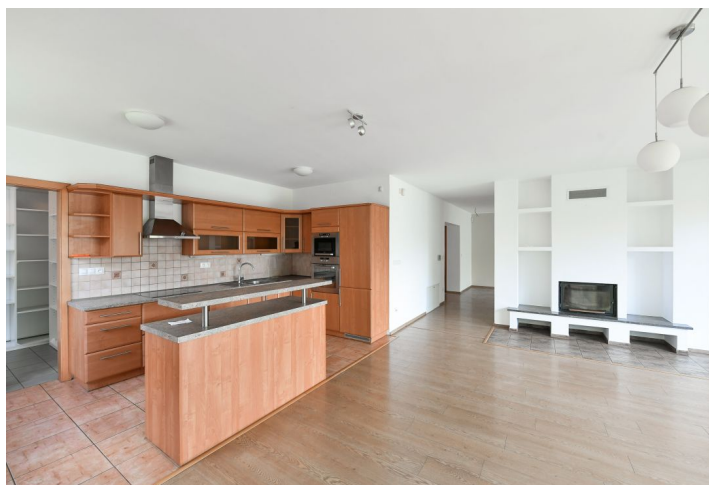




## House Six-bedroom (7+1)

€ 2 785 | CZK 70 000

450 m<sup>2</sup>, Prague 5, Slivenec, K Holyni





## House Six-bedroom (7+1)

€ 2 785 | CZK 70 000

450 m<sup>2</sup>, Prague 5, Slivenec, K Holyni

Plot	1 057 m <sup>2</sup>
Foot print	320 m <sup>2</sup>
Garden	737 m <sup>2</sup>
Parking	Double garage and two parking spaces in front of the house.
Garage	Yes
Cellar	Yes
Service price	Utilities are billed separately.
PENB	G
Reference number	105634
Available from	Immediately

This unfurnished freestanding house with a sauna, Jacuzzi, and a nicely landscaped private garden is set in a quiet residential neighborhood in Slivenec, Prague 5, near the Chuchelský háj and Dalejské údolí nature parks. Located within easy reach of the Vltava River and Berounka River valley, offering natural areas ideal for sports and hiking. The location is easily accessible by car and public transport - 10 minutes to the Smíchov Railway Station and metro (line B).

The ground floor includes a spacious living room with a fireplace and access to the terrace/garden, a fully fitted kitchen with a dining area and an adjacent pantry, a bedroom, a bathroom (walk-in shower, toilet), and an entrance hall with access to the garage. The upper floor features a master bedroom with a fitted walk-in closet, an en-suite bathroom (bathtub, toilet) and a large terrace, four additional bedrooms, a bathroom (bathtub, bidet, toilet), and another large separate terrace. There is a basement floor with a playroom, a gym, a boiler room, and a wellness area offering a sauna and a shower.

Air-conditioning, hardwood floors, tiles, blinds, gas boiler, dishwasher, induction cooktop, microwave oven, central vacuum cleaner, alarm, security cameras. Double garage plus two parking spaces in front of the house.

