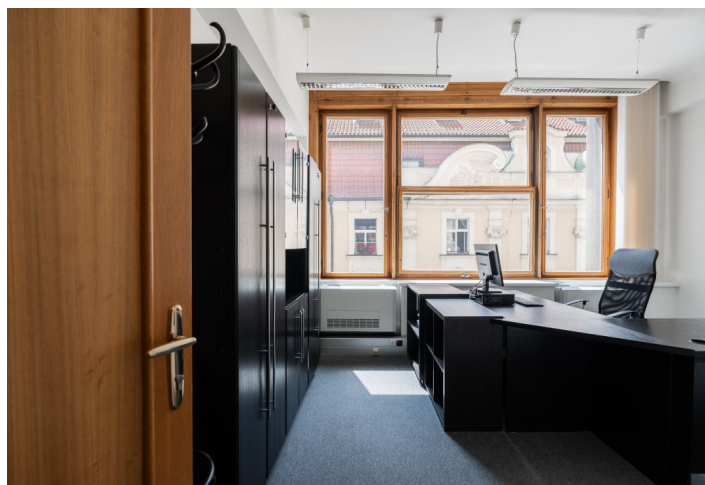
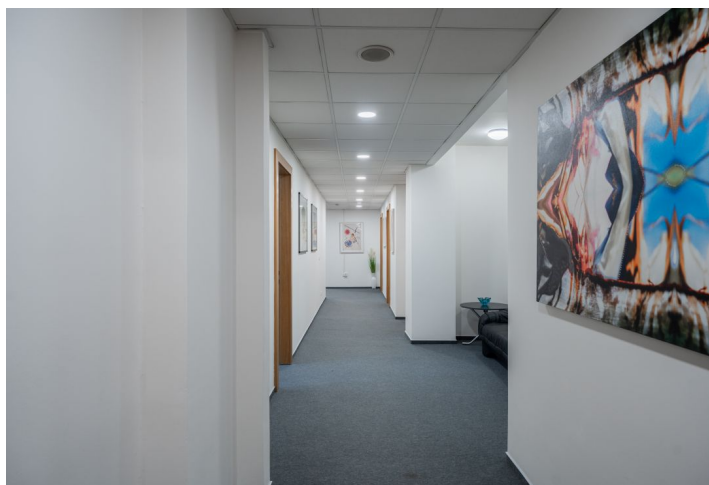
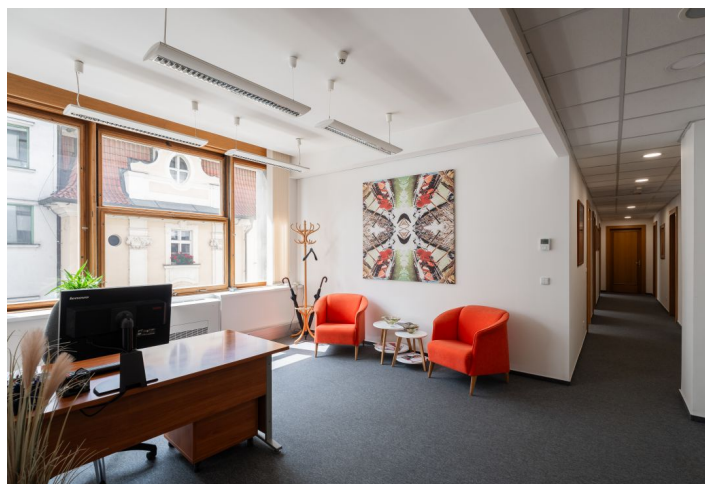




Office space

€ 19.00 / m² | CZK 477 / m²

Prague 1, Staré Město, Na Příkopě





Office space

Prague 1, Staré Město, Na Příkopě

€ 19.00 / m² | CZK 477 / m²

Service price	160 CZK monthly
Available area	301 m ²
Cellar	-
Parking	-
PENB	D
Reference number	105688

Modern office space for sublease until December 2026 on the 4th floor of one of the earliest large city constructivist palaces, designed in a functionalist style, located in the financial and business centre of Prague. Notable features of the building include its ground floor with shopfronts and an arcade entrance, as well as a prominent advertising sign on the corner.

Furniture can be purchased for 50,000 CZK.

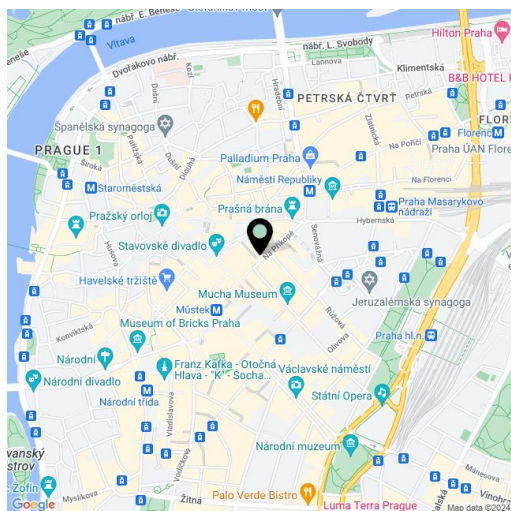
Location:

Great accessibility by car and public transportation – within walking distance of the Můstek (lines A, B), Náměstí Republiky (line B) and Muzeum (line C) metro stations, moments from tram stop and close to the city highway with direct connection to the D1 highway. Train stations Masarykovo Nádraží and Hlavní Nádraží less than 5 minutes walking distance.

Features and Services:

- Representative reception
- 24/7 building security and access to the building
- Toilets with showers
- FC units - cooling and heating system
- Kitchenette
- Openable windows
- Blinds

Rental and service charges listed without VAT. Lessee pays no commission.





Office space

Prague 1, Staré Město, Na Příkopě

€ 19.00 / m² | CZK 477 / m²

