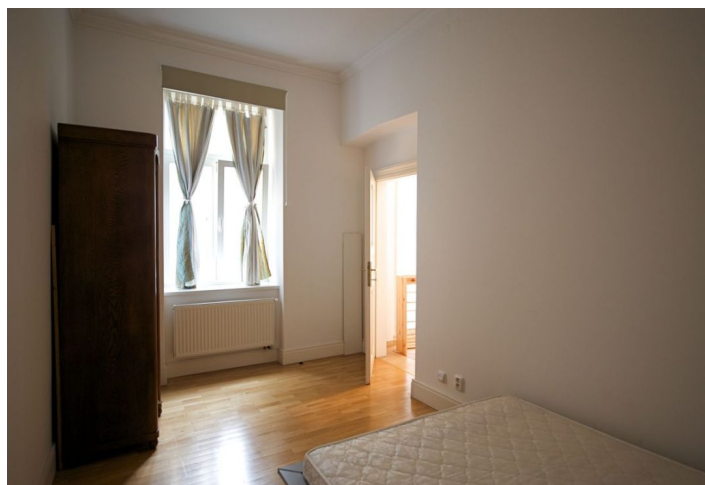
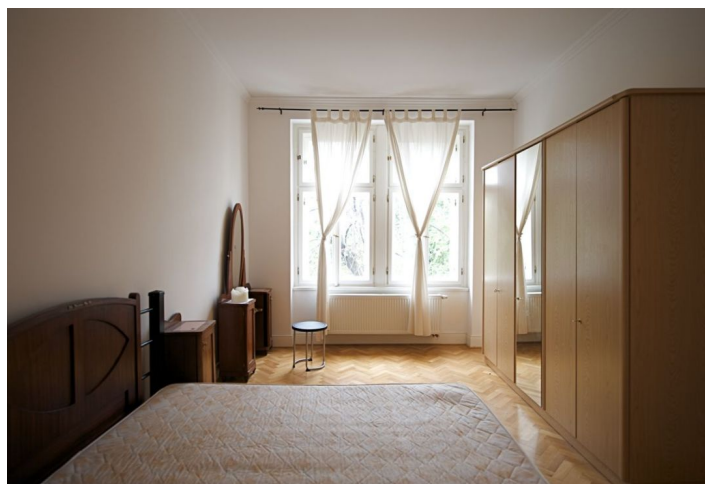
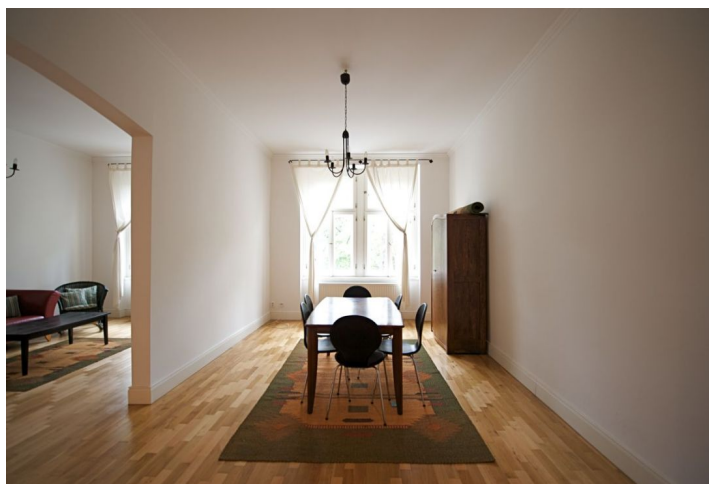




Apartment Two-bedroom (3+1)

Rented

110 m², Prague 7, Bubeneč, Nad Královskou oborou





Apartment Two-bedroom (3+1)

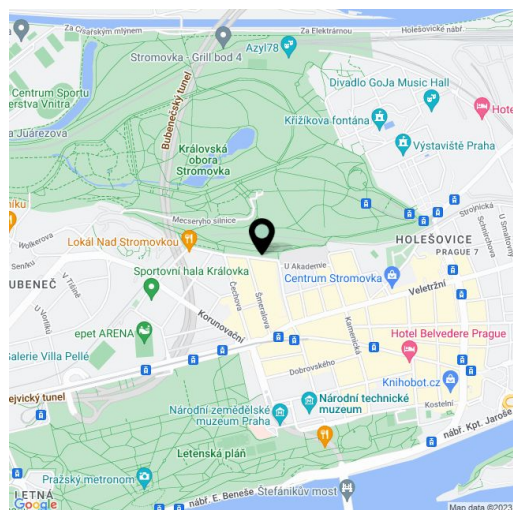
Rented110 m², Prague 7, Bubeneč, Nad Královskou oborou

Total area	110 m ²
Parking	Možnost pronájmu garážového stani poblíž za extra poplatek.
Garage	Yes
Cellar	-
PENB	G
Reference number	10571
Available from	Immediately

Partially furnished 2-bedroom 2-bathroom apartment located on the first floor of a charming, completely renovated turn of the century building directly across the street from Stromovka, the largest park in Prague.

The apartment is designed with careful attention to detail creating spacious comfortable and luxurious living quarters. The gracious lobby, high ceilings and hardwood floors, help to create the splendor of Prague's magnificent past. The apartment has a spacious fully fitted and equipped kitchen and dining room, living room, modern bathrooms (shower; bath tub), and a small balcony. One bedroom is separate, the other is accessed from the living room. Extra toilet, washer.

Pretty views create a peaceful country atmosphere. Lovely in every season, with paths and trails for walking, hiking, cycling, jogging, rollerblading and horseback riding. Convenient to the city center, a few tram stops to metro or a nice walk across the Letná park and the Vltava river. Monthly deposit for common building charges and utilities CZK 5.000. Available from October 2018.



* Area of the unit according to the Civil Code. The area consists of the sum total area of the entire unit bounded by perimeter walls.