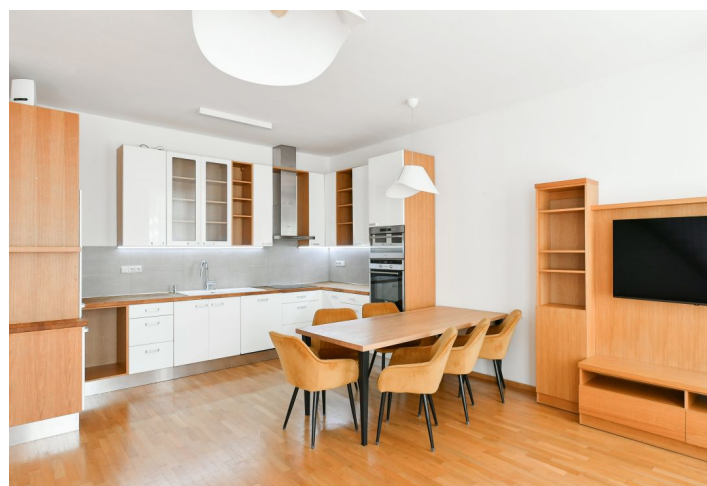
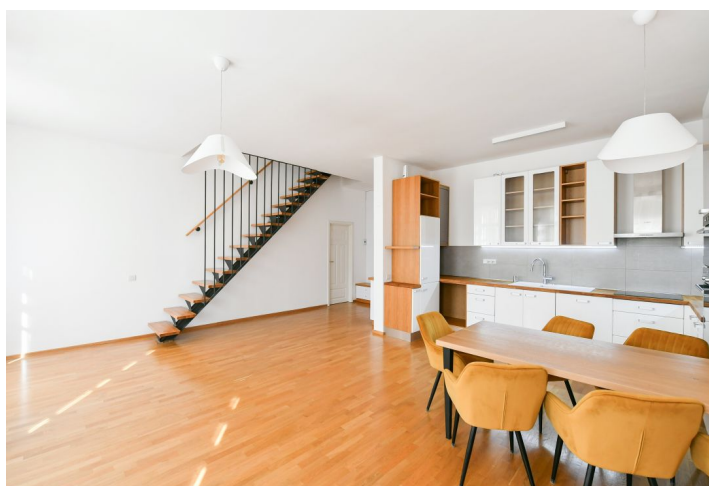




## Apartment Three-bedroom (4+kk)

Rented

137.2 m<sup>2</sup>, Praha 2, Nové Město, Kateřinská





## Apartment Three-bedroom (4+kk)

Rented

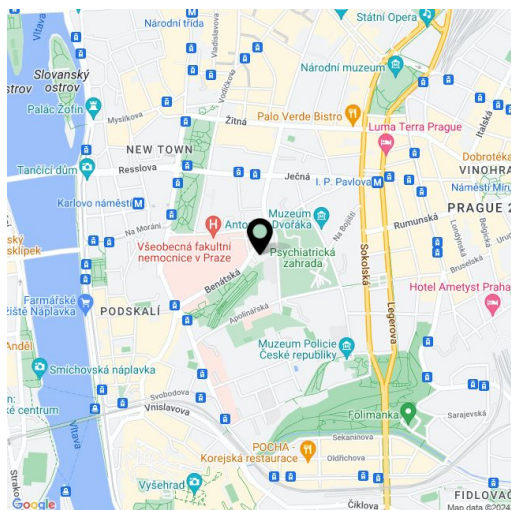
137.2 m<sup>2</sup>, Praha 2, Nové Město, Kateřinská

Total area	137 m <sup>2</sup>
Parking	-
Cellar	3 m <sup>2</sup>
Service price	Monthly deposit for services and water: CZK 1,300/person. Electricity and gas are billed separately.
PENB	Not required
Reference number	105729
Available from	Immediately

This renovated, unfurnished 3-bathroom split-level attic apartment is on the 2nd topmost floor of a completely refurbished historic apartment building constructed on the site of the former St. Catherine Convent, in the center of Prague. Located near the Kateřinská Garden and the Botanical Garden of the Charles University Science Faculty, within walking distance of the Charles Square and I.P. Pavlova metro stations with full amenities and services in the vicinity.

The lower level of the apartment features a living room with a fully fitted open plan kitchen, a master bedroom with a built-in wardrobe and an ensuite bathroom (bathtub, toilet), a family bathroom (walk-in shower, toilet), a storage room/walk-in closet, and an entrance hall with built-in wardrobes. The upper level includes two bedrooms with built-in wardrobes and a bathroom (walk-in shower, toilet).

**Hardwood oak floors, tiles, casement windows, automatic roller blinds, gas boiler, washing machine, dishwasher, induction stove top, microwave oven, video entry phone, cellar.**



\* Area of the unit according to the Civil Code. The area consists of the sum total area of the entire unit bounded by perimeter walls.