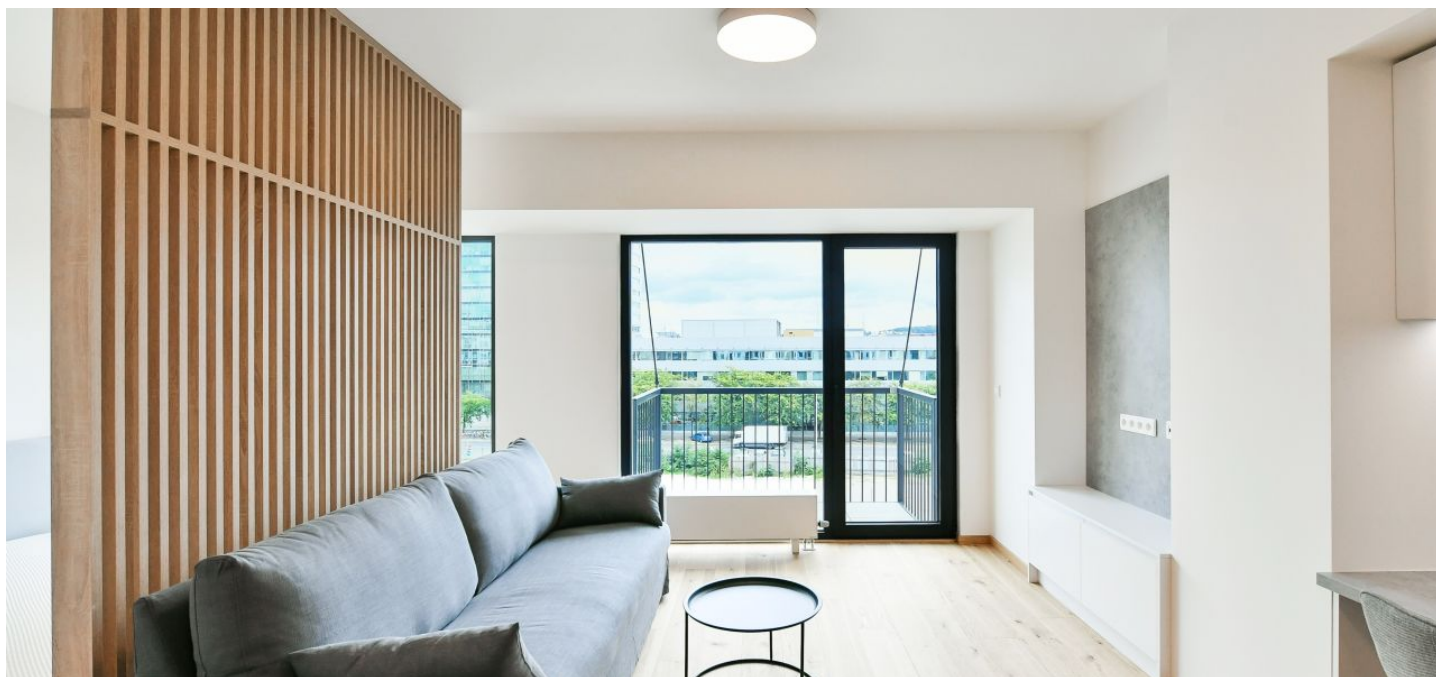




Apartment Studio (1+kk)

44 m², Praha 7, Holešovice, V Háji

Rented





Apartment Studio (1+kk)

Rented

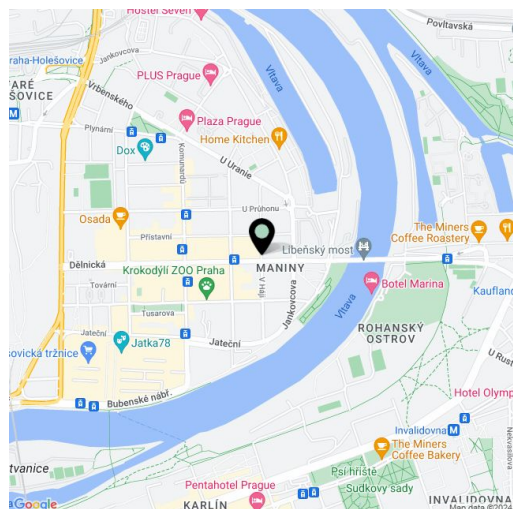
44 m², Praha 7, Holešovice, V Háji

Total area	47 m ²
Floor area*	44 m ²
Balcony	3 m ²
Parking	-
Cellar	Yes
Service price	Monthly deposit for services, water, and heating: CZK 3,800. Electricity is billed separately.
PENB	B
Reference number	105734
Available from	Immediately

This brand new furnished studio apartment with a balcony is on the 3rd floor of the newly built SO-HO Residence in close vicinity of the Vltava embankment and Ladislavův Park. Situated on a quiet street in Holešovice, Prague 7, in a location with full amenities within easy reach and excellent access to the city center—tram connections to the the Palmovka, Vltavská, and Nádraží Holešovice metro stations. Conveniently located for the Holešovice Squash Center, the Rohanský Ostrov driving range, the DOX Centre for Contemporary Art, the Prague Market, and many theaters and music clubs incl. SaSaZu, La Fabrika, Rock Opera, and Jatka 78.

The interior features a living room with a fully fitted open plan kitchen and balcony access, a partially separated bedroom area with a built-in wardrobe, and a bathroom (walk-in shower, separate toilet).

Hardwood floors, tiles, security entry door, automatic exterior blinds, central heating, dishwasher, induction stove top, microwave oven, cellar.



* Area of the unit according to the Civil Code. The area consists of the sum total area of the entire unit bounded by perimeter walls.