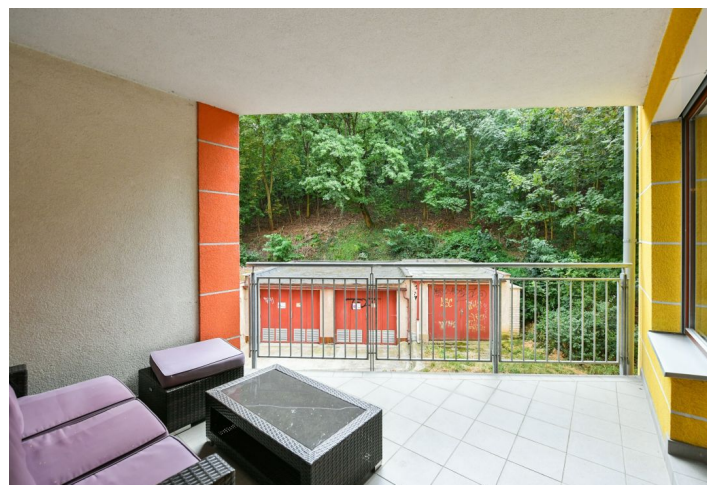
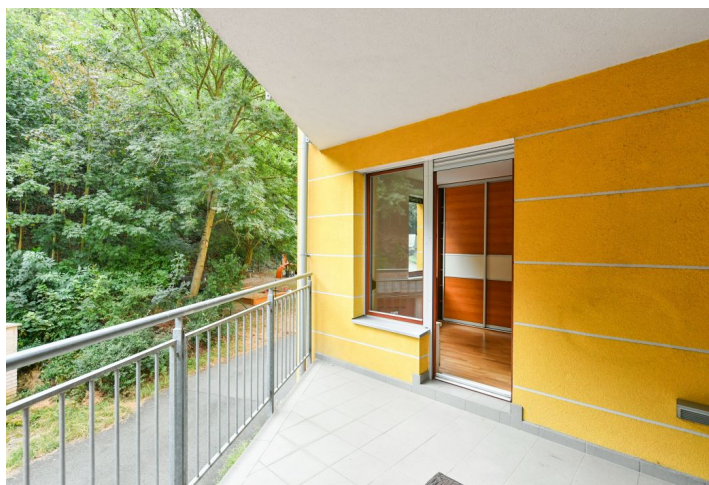




## Apartment Two-bedroom (3+kk)

Rented

77 m<sup>2</sup>, Prague 5, Košíře, Lovčenská





## Apartment Two-bedroom (3+kk)

Rented

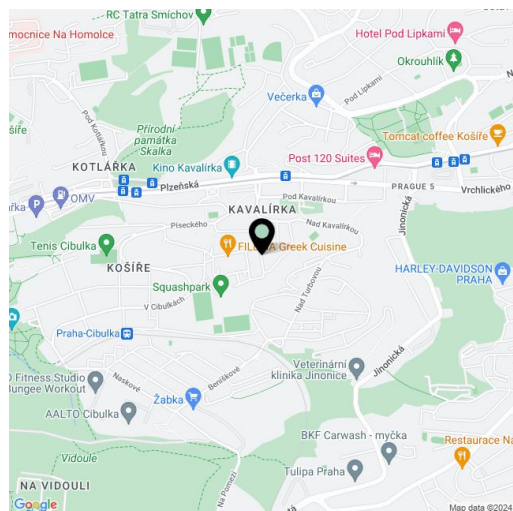
77 m<sup>2</sup>, Prague 5, Košíře, Lovčenská

Total area	88 m <sup>2</sup>
Floor area*	77 m <sup>2</sup>
Loggia	11 m <sup>2</sup>
Parking	Garage parking.
Garage	Yes
Cellar	Yes
Service price	Monthly deposit for services, water, and heating: CZK 4,500. Electricity is billed separately.
PENB	C
Reference number	105736
Available from	Immediately

This semi-furnished apartment with an enclosed balcony, on the upper ground floor of a building from 2008, with underground parking, in a quiet residential part of Košíře, Prague 5, near the Kavalírka and Klamovka parks. Located just a few min. walk from a tram and bus stop, with quick access to the Nový Smíchov shopping and entertainment center and Anděl metro station (line B), and the city center (10 min. drive). There is a small playground nearby, as well as tennis and squash courts.

The interior includes a living room with a fully fitted open plan kitchen and dining area, a master bedroom with a built-in wardrobe, a children's bedroom, a bathroom (bathtub with a shower screen), a separate toilet, and an entrance hall with a built-in wardrobe. The **enclosed balcony** is accessible from the living room and the master bedroom.

**Green views, hardwood floors**, tiles, exterior roller blinds, central heating, washing machine, dishwasher, induction stove top, microwave oven, video entry phone, **cellar**. A **garage parking** space is included.



\* Size of the unit according to the Housing Act.  
The area consists of the sum total of the internal area of every room.