



Apartment Two-bedroom (3+kk)

€ 751 673 | CZK 19 073 692

94.2 m², Trutnov, Strážné





Apartment Two-bedroom (3+kk)

€ 751 673 | CZK 19 073 692

94.2 m², Trutnov, Strážné

Total area	94 m ²
Parking	Private parking space
Cellar	Yes
PENB	B
Reference number	105750

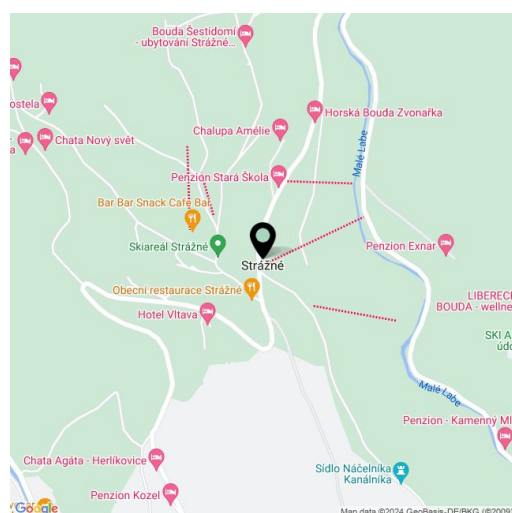
This beautiful, design furnished duplex apartment in the new Na Klecandě project is situated on a hill above the village of Strážné in the very heart of the highest Czech mountains. The modern apartment house epitomizes stylish living in peace and privacy surrounded by greenery and with views of the lush forests of Krkonoše National Park. Expected completion date Q2/2025.

The two-story apartment with a 2-bedroom layout (94.2 m²) offers, on the entrance floor (ground floor), a bedroom with an **en-suite bathroom and a walk-in closet**, and an entrance hall with a staircase leading to the 1st floor, where there is a living room with a kitchen and dining area, a bedroom, a bathroom, and separate toilets. It comes with a **private parking space** and a **cellar** for storing not only sports equipment.

Facilities include a **kitchen** equipped with **Siemens appliances**, a **built-in wardrobe and designer furniture for the living room, bedroom or dining room** (you can choose from 3 sets according to the design of KONSEPTI). The apartment is also equipped with an **oak three-layer floor** in combination with large-format tiles, **aluminum windows (triple-glazed)** with wooden window sills, **Laufen and Hansgrohe** bathroom fittings, and security entrance doors. The **Loxone** smart home system makes it easy to control heating, lighting, and other household functions.

The great location of the project promises active sports experiences thanks to **numerous hiking trails, bike routes, cross-country trails, and ski lifts**. In nearby **Špindlerův Mlýn** there is also an **aqua park** and the large **Bedřichov sports and wellness center**. The nearby Friesovy boudy area offers fine dining, and an excellent local restaurant with a sunny terrace and a shop are located in the center of **Strážné**, where there is also a cozy cafe nearby. The city of Vrchlabí, 10 km away, is home to complete amenities.

Floor area 94.2 m².



* Area of the unit according to the Civil Code. The area consists of the sum total area of the entire unit bounded by perimeter walls.



Apartment Two-bedroom (3+kk)

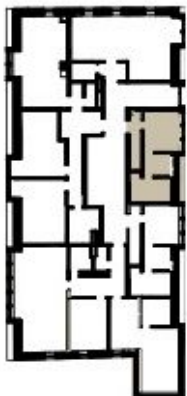
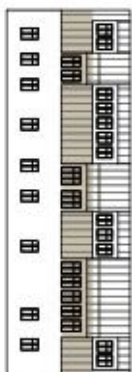
€ 751 673 | CZK 19 073 692

94.2 m², Trutnov, Strážné

NISEKO

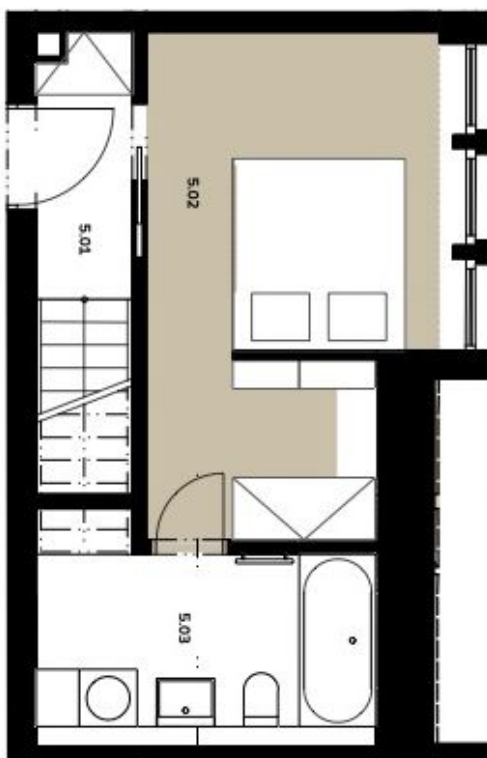
www.niseko.cz

info@niseko.cz



5.01	Předstíř + schodiště	5.02 m²
5.02	Pokoj	14,85 m²
5.03	Kašelna	6,95 m²
5.04	Obývací pokoj + kuchyň	38,23 m²
5.05	Pokoj	11,55 m²
5.06	Kašelna	6,67 m²
5.07	WC	2,00 m²
Parking		
Sklep		
Užitná plocha		85,37 m²

05

KLECANDA
APARTMÁN
3+KK · 94,2 m² · 1. + 2NP01
02
03
04
05

Plachty jednotlivých místností jsou pouze orientační. Vyměřené zařazení předmětů bytu (kabelové, lampa, atd.) podle skutečné reality není součástí dohodky. Přesné parametry jsou speciálně vypracovány ve smlouvě. Developer si vyhrazuje právo na drobné úpravy.



Apartment Two-bedroom (3+kk)

€ 751 673 | CZK 19 073 692

94.2 m², Trutnov, Strážné

NISEKO

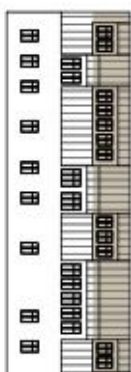
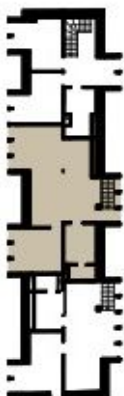
www.niseko.cz

info@niseko.cz

05

KLECCANDA
APARTMÁN
3+KK · 94,2 m² · 1. + 2NP

5.01	Předsíň + schodiště	5.02 m ²
5.02	Pokoj	14,85 m ²
5.03	Kašelna	6,95 m ²
5.04	Obývací pokoj + kuchyň	38,23 m ²
5.05	Pokoj	11,65 m ²
5.06	Kašelna	6,67 m ²
5.07	WC	2,00 m ²
Parking		
Sklep		
Užitná plocha		85,37 m ²



Pracny je energetický stavost
Jsou pouze orientací. Vytvozené
zabavení plochy bytu, kábel, kuch.
řada, at sportovní stůl i nové sušiči
dobitky. Převně parametry jsou
specificky ve smlouvě. Developer
si vyhrazuje právo na dírové úpravy.