



Retail space

85 m², Jablonec nad Nisou, Bedřichov

Ask for price





Retail space

85 m², Jablonec nad Nisou, Bedřichov

[Ask for price](#)

Total area	85 m ²
Parking	-
PENB	A
Reference number	105763

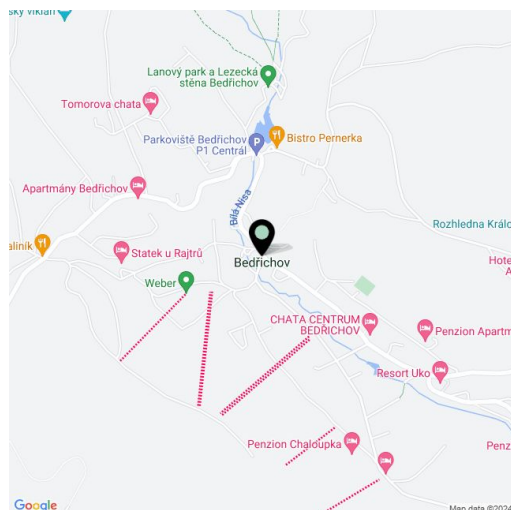
This new apartment is part of the premium Lidový dům project, which will be built in the popular resort of Bedřichov in the Jizera Mountains near Liberec and Jablonec nad Nisou, in close proximity to beautiful nature where sports activities can be enjoyed in every season. Estimated completion date in Q2 2025.

The offered apartment is located on the ground floor of the building. The layout consists of a living room with a kitchen, a bedroom, a study/children's bedroom, a foyer, and a bathroom with a toilet.

The interior is designed to guarantee perfect comfort, while large windows ensure a good dose of daylight. Residents will have underground parking, common areas, and a large green space by the Nisa River at their disposal.

This popular mountain area offers slopes, cross-country trails including the **Jizerská Highway**, bike paths, playgrounds, and sports facilities. The village has a rich selection of restaurants and cafes, as well as grocery stores and a post office. Unique to the location is the **Jizera dark sky region**, where thousands of stars can be observed undisturbed. The city of **Liberec** with a complete infrastructure and rich activities for the whole family is located at a comfortable distance, and the drive from the outskirts of Prague takes about an hour.

Floor area 85.39 m².

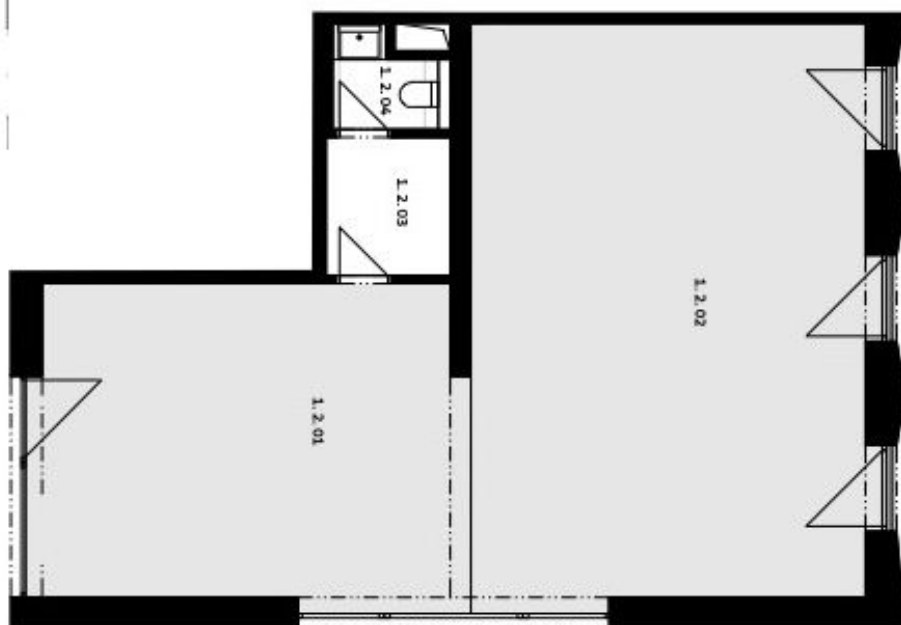




1.2

LIDOVÝ DŮM
OBCHODNÍ JEDNOTKA
85.39 m² · 1. NP

1.2.01	Obchodní jednotka	29,18 m ²
1.2.02	Obchodní jednotka	48,51 m ²
1.2.03	Předsíň	3,68 m ²
1.2.04	WC	1,95 m ²
Užitná plocha		83,32 m ²



Plochy jednotlivých místností jsou pouze orientační. Vybavení, zařízení v plánech bylo řádovým, kuch. linka, st. spotřebiče atd.) není součástí dodávky. Přesné parametry jsou specifikovány ve smlouvě. Developer si vyhrazuje právo na drobné úpravy.

