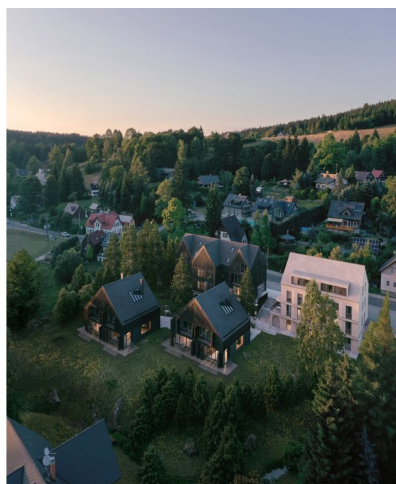




## Apartment Three-bedroom (4+kk)

€ 798 642 | CZK 19 990 000

121.17 m<sup>2</sup>, Jablonec nad Nisou, Bedřichov





## Apartment Three-bedroom (4+kk)

€ 798 642 | CZK 19 990 000

121.17 m<sup>2</sup>, Jablonec nad Nisou, Bedřichov

Total area	121 m <sup>2</sup>
Parking	Outside parking space
Cellar	Yes
PENB	A
Reference number	105769

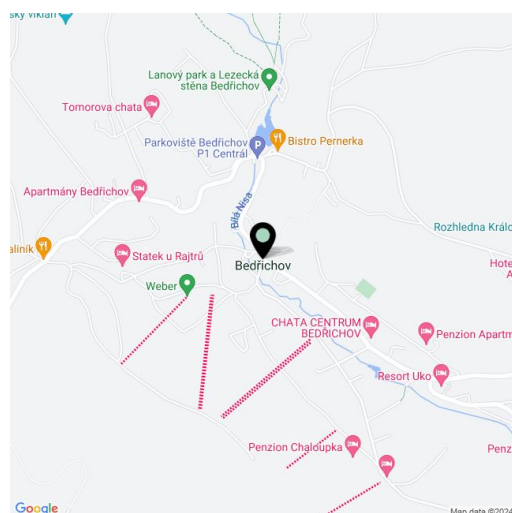
This new apartment is part of the premium Lidový dům project, which will be built in the popular resort of Bedřichov in the Jizera Mountains near Liberec and Jablonec nad Nisou, in close proximity to beautiful nature where sports activities can be enjoyed in every season. Estimated completion date in Q2 2025.

The offered apartment is located on the 2nd and 3rd floor of the building. The layout consists of a living room with a kitchen, a bedroom, a study/children's bedroom, a foyer, a bathroom, and a separate toilet. On the upper floor is a sleeping corner and a bathroom.

The interior is designed to guarantee **perfect comfort**, while large windows ensure a good dose of daylight. Residents will have **outside parking lot**, common areas, and a **large green space by the Nisa River** at their disposal.

This popular mountain area offers slopes, cross-country trails including the **Jizerská Highway**, bike paths, playgrounds, and sports facilities. The village has a rich selection of restaurants and cafes, as well as grocery stores and a post office. Unique to the location is the **Jizera dark sky region**, where thousands of stars can be observed undisturbed. The city of **Liberec** with a complete infrastructure and rich activities for the whole family is located at a comfortable distance, and the drive from the outskirts of Prague takes about an hour.

Floor area 121.17 m<sup>2</sup>.



\* Area of the unit according to the Civil Code. The area consists of the sum total area of the entire unit bounded by perimeter walls.

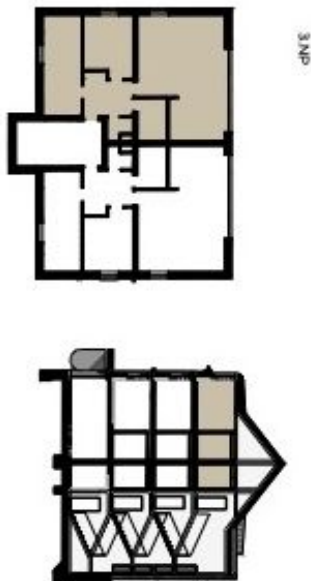


## Apartment Three-bedroom (4+kk)

€ 798 642 | CZK 19 990 000

121.17 m<sup>2</sup>, Jablonec nad Nisou, Bedřichov**3.2** LIDOVÝ DŮM  
BYT  
3+KK · 91.37 m<sup>2</sup> · 3. NP

3.2.01	Obývací pokoj + kuchyň	41,38 m <sup>2</sup>
3.2.02	Pokoj	12,66 m <sup>2</sup>
3.2.03	Pokoj	16,84 m <sup>2</sup>
3.2.04	Koupelna	5,23 m <sup>2</sup>
3.2.05	WC	1,95 m <sup>2</sup>
3.2.06	Předsíň	9,14 m <sup>2</sup>
Užitná plocha		87,20 m <sup>2</sup>



Plochy jednotlivých místností jsou pouze orientační. Vybavení zařízení v plátech bytů (židle, stůl, kuch. linka, st. spotřebiče atd.) není součástí dodávky. Přesné parametry jsou specifikovány ve smlouvě. Developer si vyhrazuje právo na drobné úpravy.

