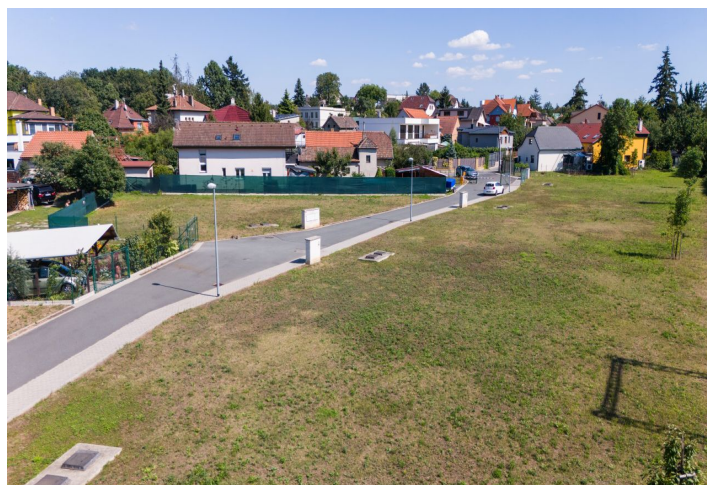
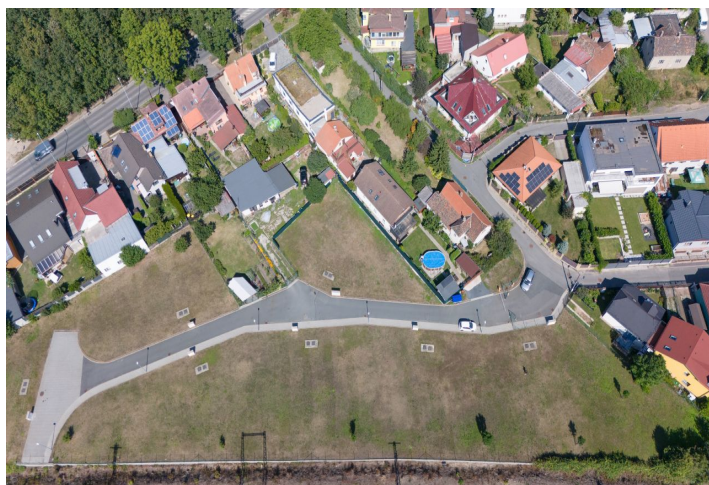
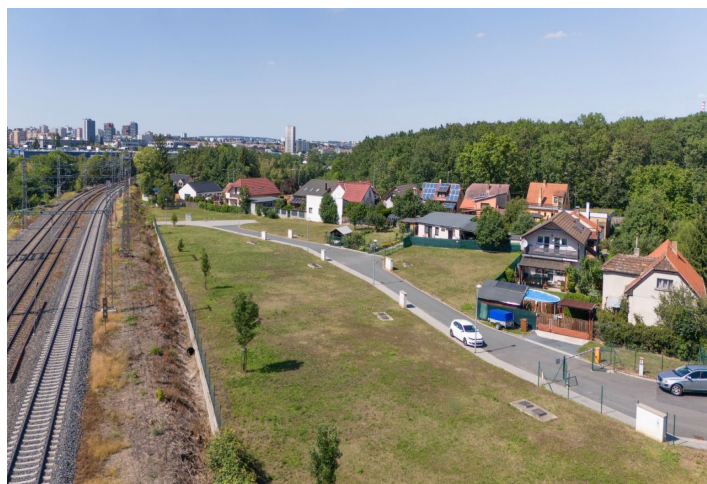




Land

755 m², Prague 10, Strašnice, K háječku

€ 412 765 | CZK 10 412 000





Land

755 m², Prague 10, Strašnice, K háječku

€ 412 765 | CZK 10 412 000

Price per sq. m.	13 791 CZK
Total area	755 m ²
Land type	Housing
Reference number	105792

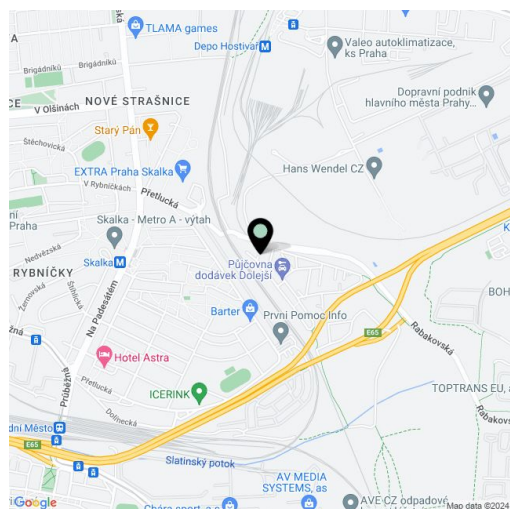
This nice, flat, southwest-facing plot is located in a residential area surrounded by greenery within walking distance of the Skalka metro station (line A). This attractive part of Prague 10 - Strašnice boasts an ideal combination of complete civic amenities and excellent transport connections to the city center.

The sunny plot is part of an enclosed area behind a barrier, an access asphalt road, and public lighting. According to the zoning plan and the planned metropolitan plan, it is classified as a residential zone with the possibility of a floor area of up to 484 m². The electricity connection is on the property, and the water supply and sewer shafts are ready for being connected during construction.

There is a shopping center, supermarket, and other shops, medical facilities, a children's playground, a kindergarten and elementary school, restaurants, and cafes all within walking distance. Perfect transport connections ensure easy access to the Southern Junction and the availability of public transport (A line metro station, Plošná bus stop 300 meters away, Praha-Zahradní město train station).

A total of 7 plots of land are offered for sale within the area.

Plot 606 m². Share on the land, communication and a private road at the plot of 149 m².





Land

755 m², Prague 10, Strašnice, K háječku

€ 412 765 | CZK 10 412 000

