



House Four-bedroom (5+kk)

€ 1 656 356 | CZK 41 500 000

220 m², Praha-západ, Horoměřice, K Menhiru





House Four-bedroom (5+kk)

€ 1 656 356 | CZK 41 500 000

220 m², Praha-západ, Horoměřice, K Menhiru

Plot	661 m ²
Foot print	122 m ²
Garden	539 m ²
Parking	Parking on the plot for 2 cars
Cellar	Yes
PENB	B
Reference number	105909

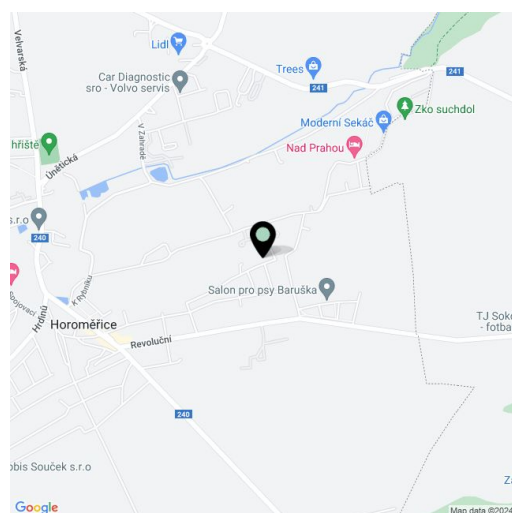
This newly built family house with a practical layout and bright interior and a top-notch sauna is located in a quiet, green area in the village of Horoměřice, on the outskirts of the Suchdol and Lysolaje parts of Prague 6, not far from international schools and the airport. Expected approval date at the end of 2024.

On the ground floor is a living room with space for a kitchen and dining room, connected to a **south-facing terrace**. The layout of this floor is completed by a walk-in wardrobe, a toilet, and a utility room with a slop sink. The first floor is designed as a **private zone**, the master part consists of a bedroom, a walk-in wardrobe and a bathroom with an **infrared sauna**, and there are 2 more bedrooms, each with its own dressing room, a study, and a central bathroom.

The house features aluminum entrance doors in the **anthracite** color, windows in the same design with triple glazing and interior blinds with electric control, rebateless interior doors with **magnetic locks**, videophone, large-format tiles on the ground floor and **oak flooring** on the upper floor. Floor heating in the entire house will be provided by a **heat pump** of the **Stiebel Eltron** German brand with a cooling function, and the rooms are equipped with **thermostats** for **individual temperature control**. The high-quality sanitary ware are primarily from **Laufen and Hansgrohe**. The **sauna**, made of **aspen wood**, features glass doors and **LED backlighting**. Parking for 2 cars is provided in the form of a **covered parking space**, which is followed by a room that can be used as a **garage for a motorcycle** or **garden equipment**. A retention tank for rainwater is installed on the property.

The house is part of a new residential part of Horoměřice with a very good infrastructure. Nearby is a kindergarten and elementary school, shops including a supermarket, a sports complex and a children's playground. The **ČZU** campus is also within easy reach, the **Riverside School Prague** or the **International School of Prague international schools** are within a short driving distance, and the journey to the airport is also quick. Buses provide a connection to the Dejvická metro station (15-minute drive), traffic service will be even better after the extension of the tram line to Suchdol, where it is possible to walk along a **pedestrian-lined alley**. The area is surrounded by a **beautiful landscape** with many **natural monuments**.

Usable area 219.56 m², built-up area 122 m², garden 539 m², plot 661 m².

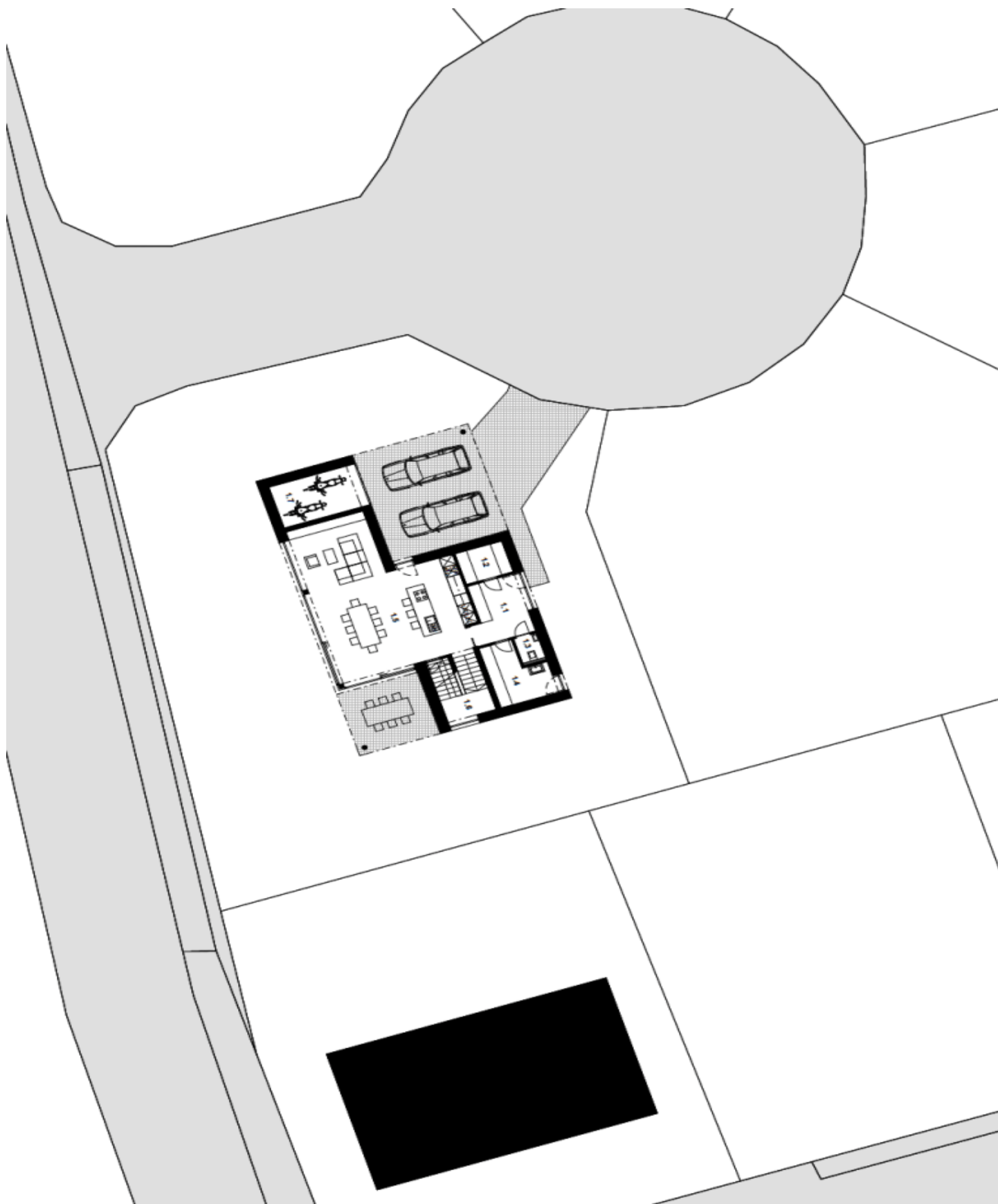




House Four-bedroom (5+kk)

€ 1 656 356 | CZK 41 500 000

220 m², Praha-západ, Horoměřice, K Menhiru

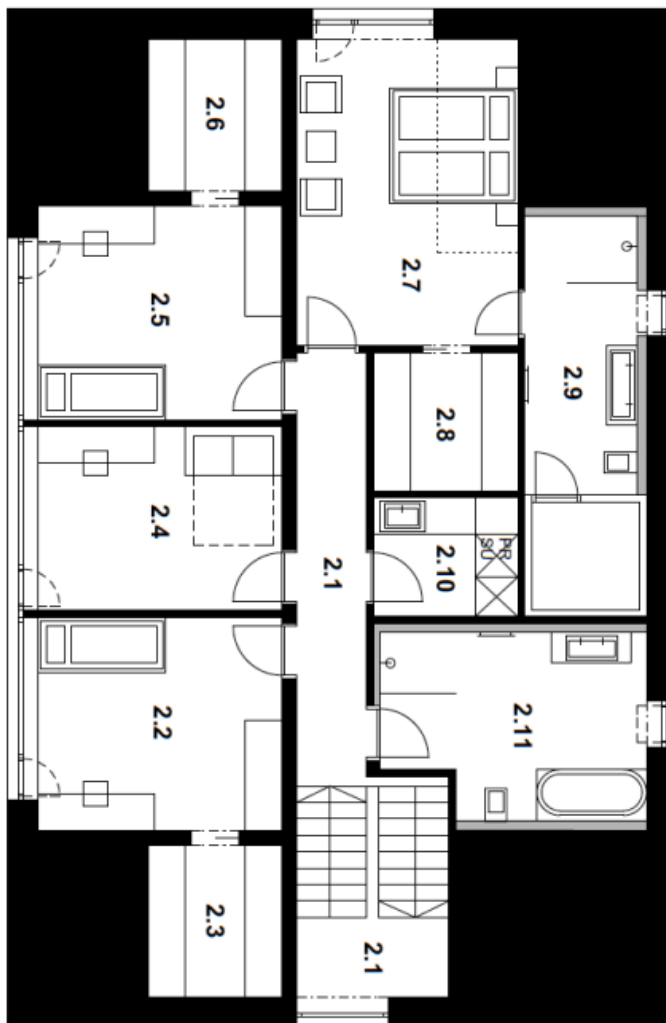
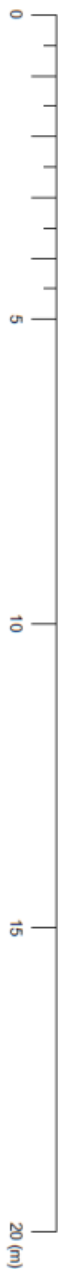




House Four-bedroom (5+kk)

€ 1 656 356 | CZK 41 500 000

220 m², Praha-západ, Horoměřice, K Menhiru

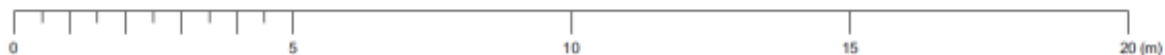
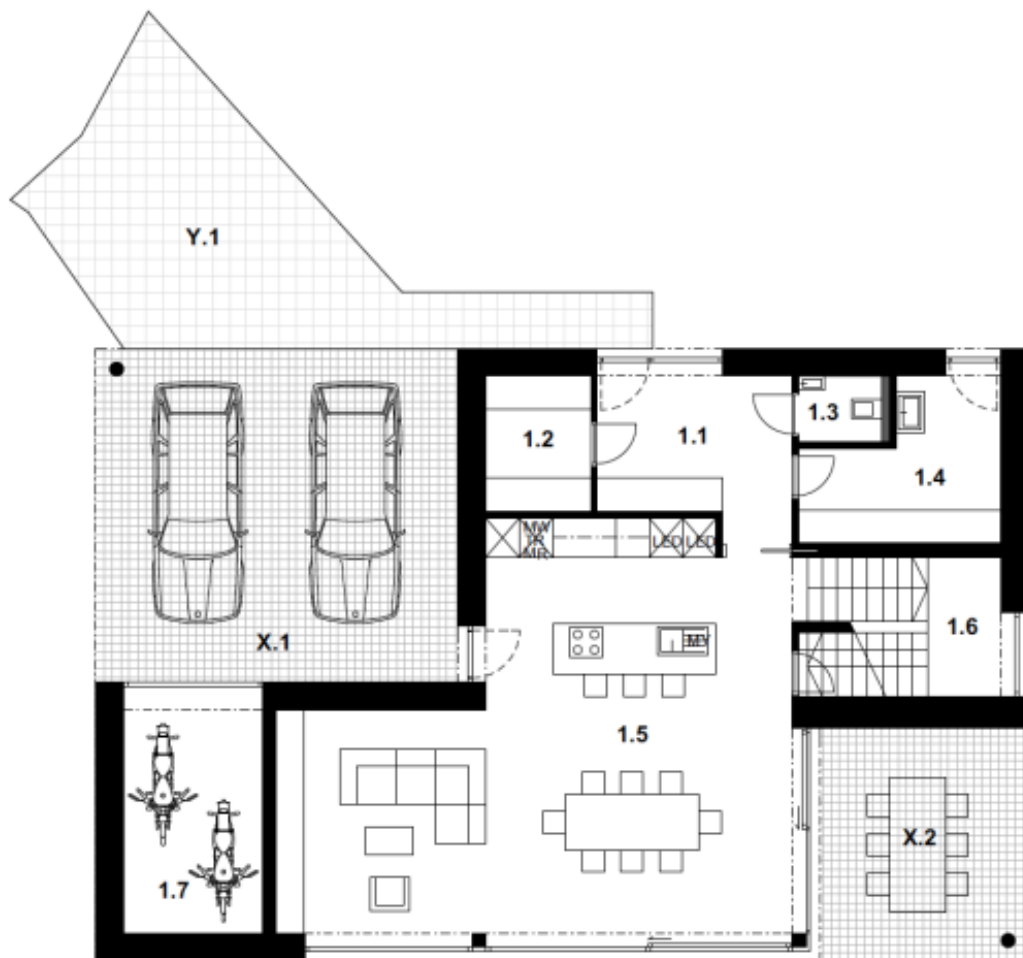




House Four-bedroom (5+kk)

€ 1 656 356 | CZK 41 500 000

220 m², Praha-západ, Horoměřice, K Menhiru

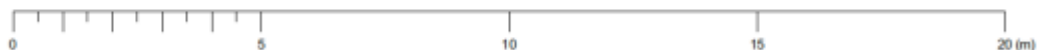
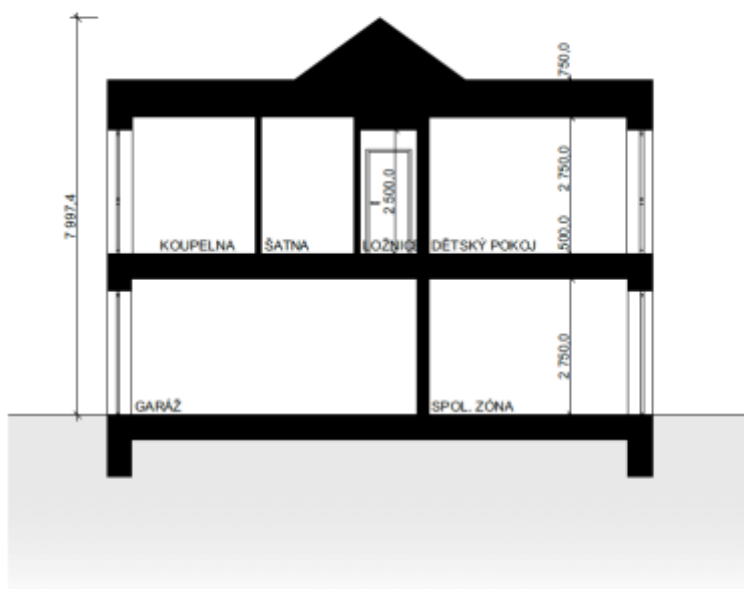
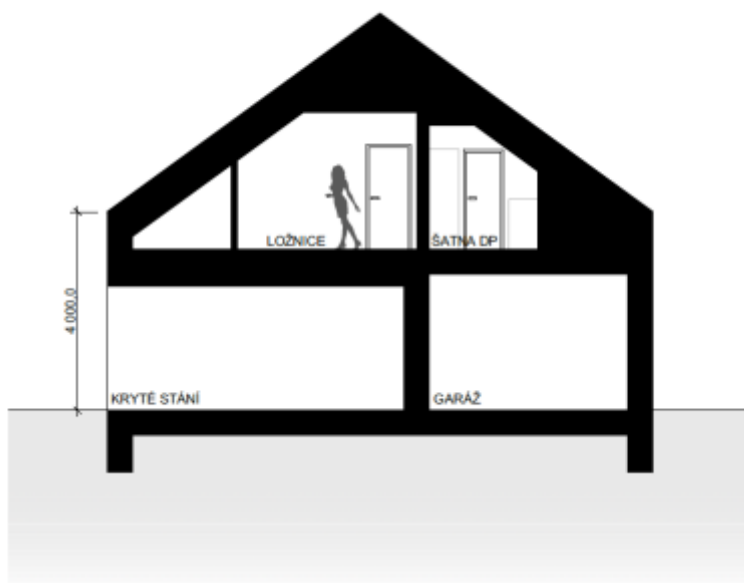
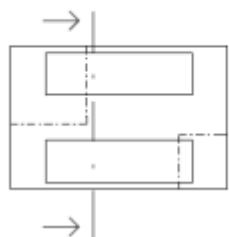
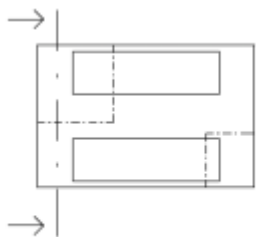




House Four-bedroom (5+kk)

220 m², Praha-západ, Horoměřice, K Menhiru

€ 1 656 356 | CZK 41 500 000





House Four-bedroom (5+kk)

220 m², Praha-západ, Horoměřice, K Menhiru

€ 1 656 356 | CZK 41 500 000

