



Apartment Two-bedroom (3+kk)

€ 918 991 | CZK 23 319 406

110.3 m², Trutnov, Strážné





Apartment Two-bedroom (3+kk)

€ 918 991 | CZK 23 319 406

110.3 m², Trutnov, Strážné

| | |
|------------------|-----------------------|
| Total area | 110 m ² |
| Parking | Private parking space |
| Cellar | Yes |
| PENB | B |
| Reference number | 105921 |

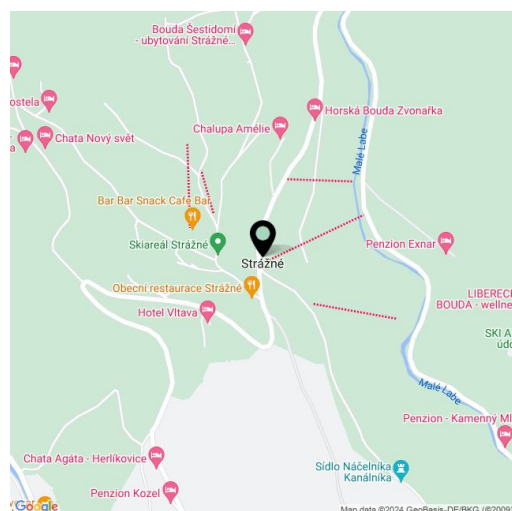
This beautiful, design furnished apartment is part of the new Na Klecandě project located on a hill above the village of Strážné in the heart of the highest Czech mountains. The apartment house epitomizes modern and stylish living in peace and privacy surrounded by greenery and with views of the lush forests of Krkonoše National Park. Expected completion date Q2/2025.

The ground floor apartment of 110.30 m² consists of a living room with a dining area and a kitchen, 2 bedrooms, a bathroom with a bathtub, a separate WC, and a spacious hall. There is also a **private parking space** and a cellar for storing not only sports equipment.

Facilities include a kitchen equipped with Siemens appliances, a built-in wardrobe and designer furniture for the living room, bedroom or dining room (you can choose from 3 sets according to the design of KONSEPTI). The apartment is also equipped with an oak three-layer floor in combination with large-format tiles, aluminum windows (triple-glazed) with massive wooden window sills, Laufen and Hansgrohe sanitary ware, and security entrance doors. The Loxone smart home makes it easy to control heating, lighting, and other household elements.

The excellent location of the project guarantees active sports experiences thanks to numerous hiking trails, bike routes, cross-country trails, and ski lifts, and in nearby Špindlerův Mlýn there is also an aqua park and the large Bedřichov sports and wellness center. The nearby Friesovy boudy offer fine dining and there is an excellent local restaurant with a sunny terrace and a small shop right in the center of Strážné, with a cozy cafe nearby. The city of Vrchlabí, approx. 10 km away, is home to complete amenities.

Floor area 110.30 m².



* Area of the unit according to the Civil Code. The area consists of the sum total area of the entire unit bounded by perimeter walls.



Apartment Two-bedroom (3+kk)

€ 918 991 | CZK 23 319 406

110.3 m², Trutnov, Strážné

NISEKO

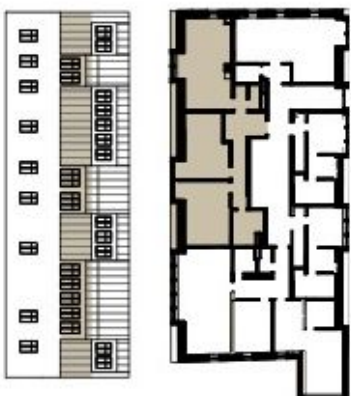
www.niseko.cz

info@niseko.cz

08

KLECANDA
APARTMÁN
3+KK + 110.3 m² + 1. NP

| | | |
|---------------|------------------------|----------------------|
| 8.01 | Chodba | 17,77 m ² |
| 8.02 | Obývací pokoj + kuchyň | 30,41 m ² |
| 8.03 | Pokoj | 19,80 m ² |
| 8.04 | Pokoj | 20,86 m ² |
| 8.05 | Koupelna | 6,73 m ² |
| 8.06 | WC | 1,59 m ² |
| Parking | | |
| Sklep | | |
| Užitná plocha | | 97,16 m ² |



01
02
03
04
05



Plachty jednotlivých místností jsou pouze orientační. Vyměřené zařazení nábytku bytu (křeslo, kuchař. linka, at. spotřebiče stůl) není součástí dovozu. Přesné parametry jsou speciálníky ve smlouvě. Developer si vyhrazuje právo na drobné úpravy.