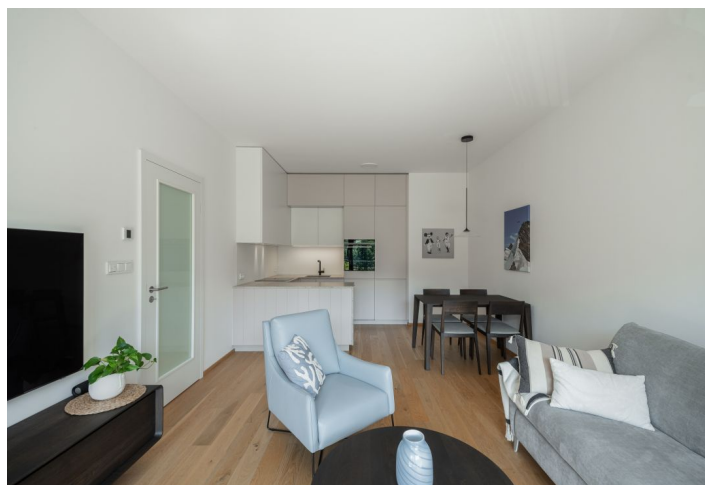
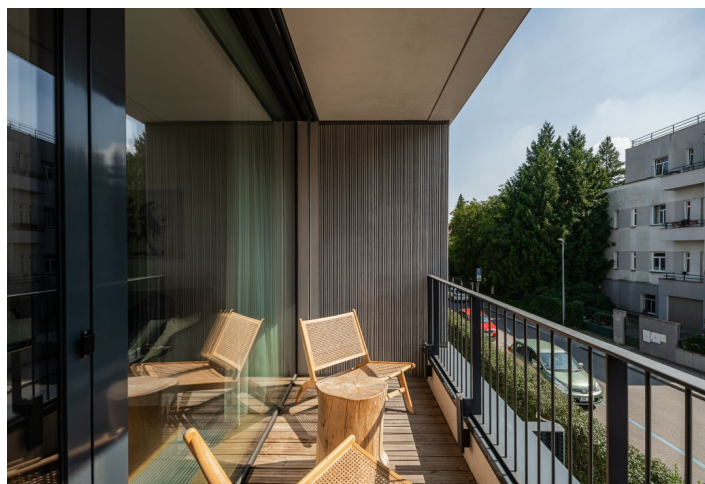




Apartment One-bedroom (2+kk)

Rented

58.2 m², Praha 6, Střešovice, Na Dračkách





Apartment One-bedroom (2+kk)

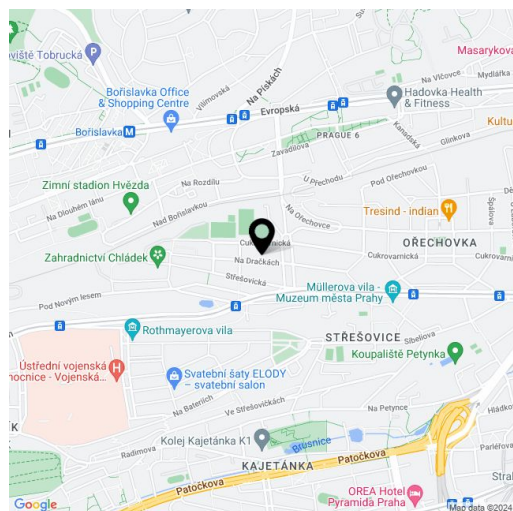
Rented58.2 m², Praha 6, Střešovice, Na Dračkách

Total area	63 m ²
Floor area*	58 m ²
Loggia	5 m ²
Parking	Garage parking.
Garage	Yes
Cellar	Yes
Service price	Monthly deposit for services, water, and heating: CZK 5,500. Electricity is billed separately.
PENB	B
Reference number	105944
Available from	Immediately

This good quality, furnished south-facing apartment with an enclosed balcony and garage parking is situated on the 1st floor of Maison Ořechovka, a high-end contemporary residential complex with a 24/7 reception designed by the QARTA Architektura studio. Set in a premium location in the Ořechovka residential neighborhood in Prague 6, on the border of Střešovice and Dejvice, with plenty of greenery. Within easy reach of amenities, international schools (The Riverside School Junior High and ISP (International School of Prague)), and the airport. The project was awarded the Real Estate Project of 2020 prize in the category Best Project in the Czech Republic.

The bright interior features a living room with a fully fitted open plan kitchen and access to the **enclosed balcony**, a bedroom with a built-in wardrobe, a bathroom (bathtub, toilet), a storage room, and an entrance hall with built-in wardrobes.

High-standard equipment, hardwood floors, tiles, security entry door, automatic exterior blinds, central heating, **Miele** washer and dryer, **Siemens** kitchen appliances, dishwasher, induction stove top, steam oven, video entry phone, **cellar**, pram and bike storage, security cameras. A **garage parking** space is included.



* Area of the unit according to the Civil Code. The area consists of the sum total area of the entire unit bounded by perimeter walls.