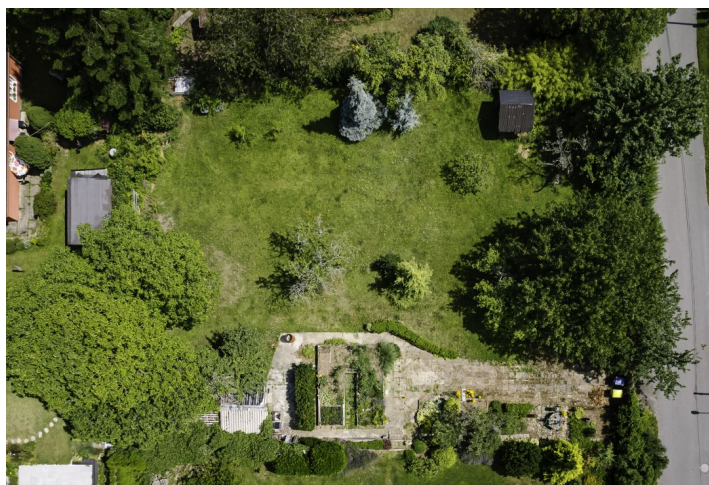




Land

1200 m², Praha-východ, Kunice

€ 387 327 | CZK 9 780 000





Land

1 200 m², Praha-východ, Kunice

€ 387 327 | CZK 9 780 000

Price per sq. m.	8 150 CZK
Total area	1 200 m ²
Land type	Housing
Reference number	105949

This plot of land suitable for the construction of a family house is located in the peaceful village of Kunice, set in a nice landscape near the Velkopopovicko nature park and at the same time in a place suitable for regular commuting to Prague.

The land is partly flat, slightly sloping in the back. It has **all utilities** and a **water well** with an **abundant water source**. The area is grassy and solitary mature trees grow on it, the asphalt road provides trouble-free access to the property.

The surroundings of the quiet village of Kunice are an area with numerous streams and ponds and, above all, forests interspersed with **cycle paths** and **hiking trails**, the **Velkopopovicko nature park** is particularly attractive for trips. The village itself offers an elementary school, groceries, a restaurant and a wealth of sports activities for adults and children (soccer, golf, tennis, mini zoo, transport playground) or **Berchtold Children's Paradise**. The nearby exit on the 15th kilometer of the D1 motorway provides a quick connection to the capital.

The maximum buildable area is 25%, which corresponds to 300 m².

Total area 1200 m².