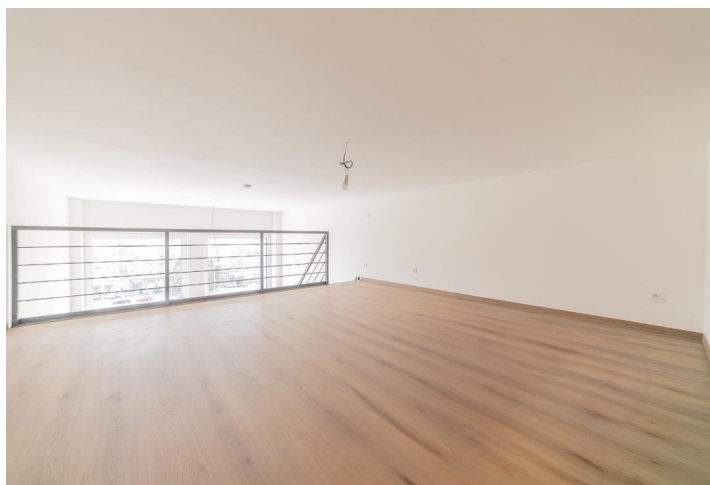
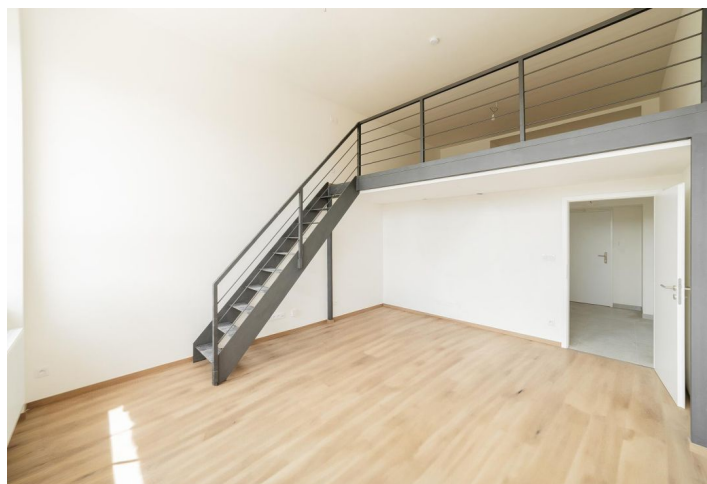




Apartment Studio (1+kk)

€ 236 453 | CZK 6 000 000

54.8 m², Praha 10, Vršovice, Kubánské náměstí





Apartment Studio (1+kk)

€ 236 453 | CZK 6 000 000

54.8 m², Praha 10, Vršovice, Kubánské náměstí

Total area	55 m ²
Parking	-
Cellar	Yes
PENB	C
Reference number	105966

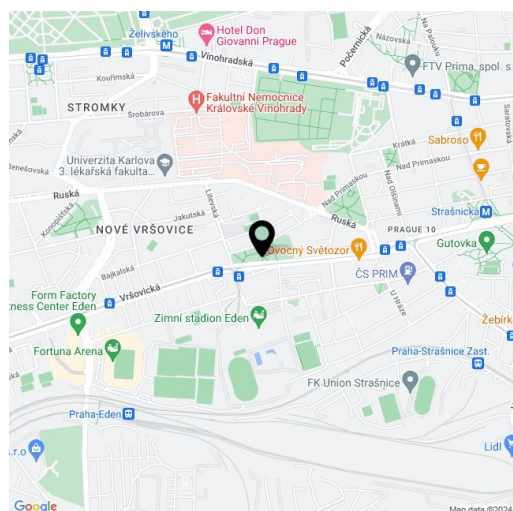
This new loft apartment located on the 3rd floor of a completely renovated building with an elevator is located in the center of Kubánské Square in Vršovice. The location will delight you with a wide range of leisure activities in the vicinity, the atmosphere of regular farmers' markets, and excellent transport accessibility.

The 3rd floor apartment consists of a living room with a kitchen, a bedroom upstairs, a bathroom with a shower and toilet, and a foyer with space for a built-in wardrobe. The apartment comes with a cellar cubicle.

High ceilings combined with large windows with a **view** of the square create a feeling of an **airy space**, which is beautifully lit since it faces south. Facilities also include **aluminum windows** with thermally insulating triple glazing, **floating floors** in the living area, large-format ceramic tiles in the bathroom and in the hallway, and a fire-resistant entrance door. The sandstone-clad building was built in the 1960s by architect **Jiří Siegel**, who also designed Karel Gott's villa in Strašnice, and has now been completely renovated, including a central marble staircase with a **glass elevator**. The building is connected to central heating.

The area is located in the very center of a lively place. Literally around every corner is a restaurant or cafe, there is a **supermarket** right on the ground floor of the building, regular **farmers' markets** are held on the square, and nearby parks invite you out for a walk. The city center is accessible by numerous tram lines directly from **Kubánské Square**.

Floor area 54.8 m² (according to the owner's statement 52.98 m²).



* Area of the unit according to the Civil Code. The area consists of the sum total area of the entire unit bounded by perimeter walls.