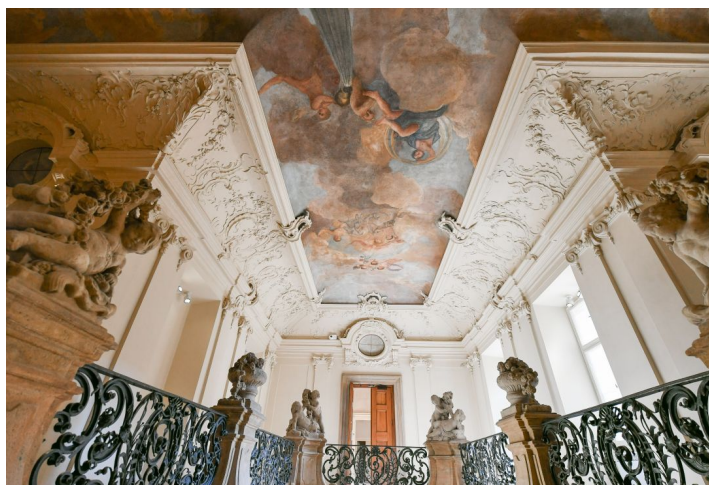
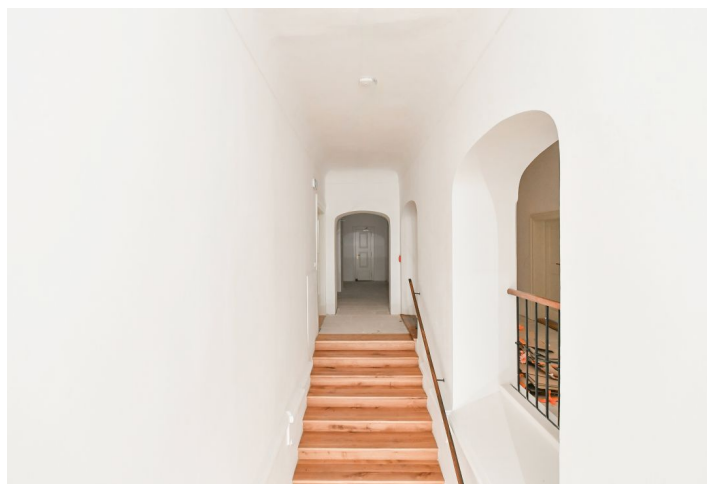




## Office space

Praha 1, Praha 1, Na Příkopě

Ask for price





## Office space

Praha 1, Praha 1, Na Příkopě

[Ask for price](#)

Available area	260 m <sup>2</sup>
Cellar	-
Parking	-
PENB	G
Reference number	105994

Office space for lease on the 2nd floor of a late Baroque palace in the center of Prague, located on prestigious Na Příkopě Street. The project includes the revitalization of the entire city block, including the historic courtyard, which will be transformed into a modern center with a 2,000 m<sup>2</sup> garden. The ground floor features a restaurant, while the upper floors retain original architectural details such as ornate staircases and historic paintings.

The history of the building dates back to the 17th century, when it was owned by aristocratic families, including the Piccolomini and Nostic families. The architect Kilian Ignaz Dientzenhofer gave it its present Baroque appearance. In 1927, the famous Savarin Café was built here, building on the original Baroque garden. The offices in this building can be flexibly adapted to the individual needs of the tenants.

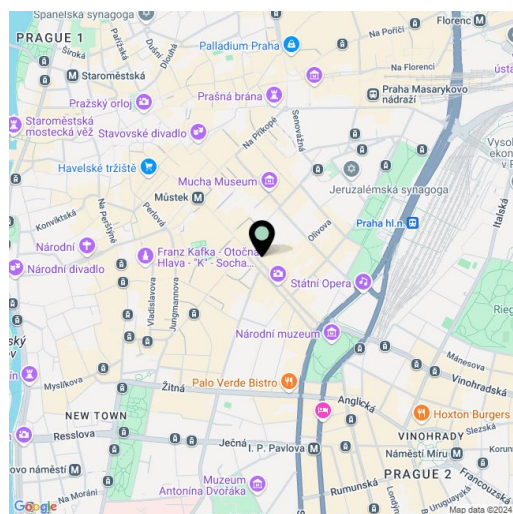
### Location:

Just a few steps from the building there is a metro station Můstek (line A and B) and several tram stops. Muzeum metro station (lines A and C) is just a few minutes' walk away. Parking is available in the adjacent garage, just a minute's walk from the main entrance.

### Features and Services:

- Parquet
- Social facilities including showers
- Cabling
- Openable windows
- Cooling

Rental and service charges listed without VAT. Lessee pays no commission.





## Office space

Ask for price

Praha 1, Praha 1, Na Příkopě

