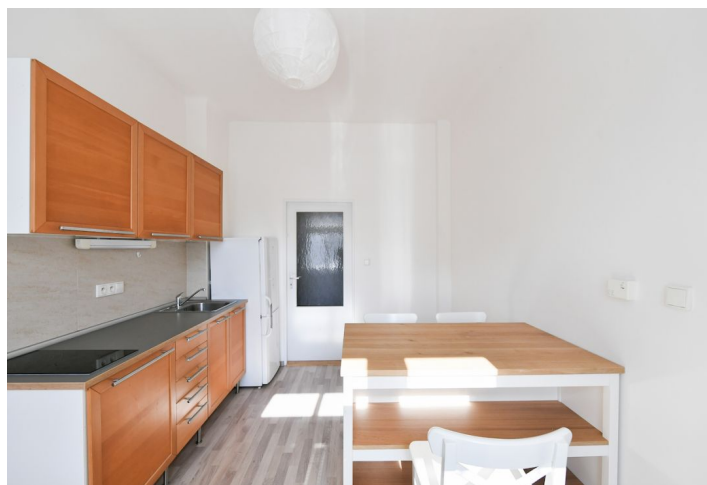




## Apartment Studio (1+1)

35 m<sup>2</sup>, Praha 6, Dejvice, Na pískách

€ 828 | CZK 21 000





## Apartment Studio (1+1)

€ 828 | CZK 21 000

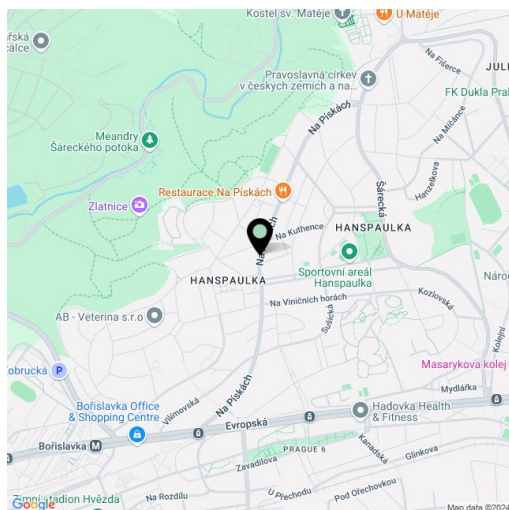
35 m<sup>2</sup>, Praha 6, Dejvice, Na pískách

Total area	35 m <sup>2</sup>
Parking	-
Cellar	-
Service price	Monthly deposit for services and water: CZK 900/person. Electricity is billed separately (transferred to the tenant).
PENB	Not required
Reference number	106038
Available from	Immediately

Benefiting from a prestigious location, this furnished west-facing apartment is situated on the upper ground floor of a building in the exclusive residential neighborhood of Hanspaulka on the edge of the Horní Šárka forest park. A sought-after location with excellent transportation connections (bus, trams, a few minutes to the Bořislavka metro station), surrounded by greenery, just a few min. drive from Vítězné Náměstí Square with full amenities and services in the area. Conveniently located for the airport and numerous international schools.

The apartment includes a living room/bedroom, a fitted kitchen with a dining area, a shower bathroom with a toilet, and an entrance hall.

Laminate floors, tiles, electric heating, blinds. The apartment can be rented without furniture.



\* Size of the unit according to the Housing Act.

The area consists of the sum total of the internal area of every room.



## Apartment Studio (1+1)

€ 828 | CZK 21 000

35 m<sup>2</sup>, Praha 6, Dejvice, Na pískách

