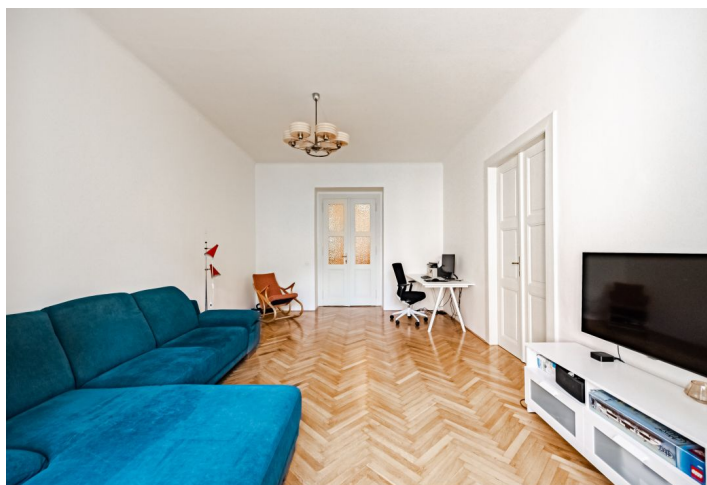




Apartment Two-bedroom (3+1)

Rented

116 m², Prague 10, Vršovice, Mexická





Apartment Two-bedroom (3+1)

Rented

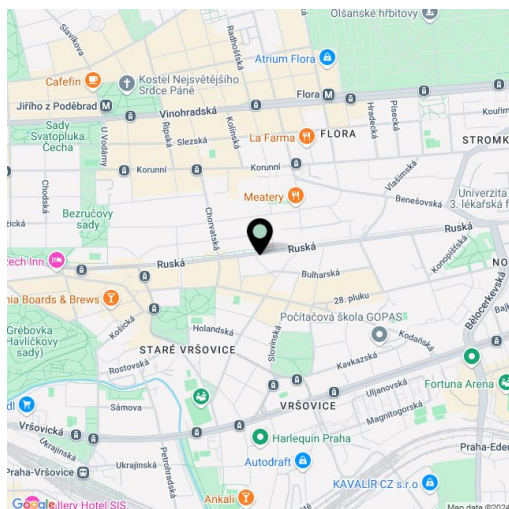
116 m², Prague 10, Vršovice, Mexická

Total area	119 m ²
Floor area*	116 m ²
Balcony	3 m ²
Parking	-
Cellar	8 m ²
Service price	Monthly deposit for services and water: CZK 2,500. Electricity and gas are billed separately.
PENB	Not required
Reference number	106150
Available from	Immediately

This renovated semi-furnished apartment with a balcony, restored period elements, and a fresh interior designed by the Prostor architectural studio, is on the 1st floor of a brick apartment building with an elevator that stands on a quiet street in a traditional residential area on the border of the Vršovice and Vinohrady neighborhoods, near a villa district from the 1930s with many architecturally significant buildings. Conveniently located for local shops, restaurants, and amenities, including leisure facilities, Heroldovy Sady Park, and the green open spaces of Havlíčkovy Sady Park. The Náměstí Míru metro station (line A) is within easy reach by bus and tram, providing direct access to the city center.

The interior includes a fully fitted kitchen with a dining area, a living room, 2 bedrooms, a bathroom with a bathtub and toilet, an entrance hall, and a large central hall that serves as a screening room, a library, and a music lounge, plus a balcony facing the courtyard. There is a south-facing niche in the living room offering nice views of the park in front of the building.

Renovated hardwood parquet floors, tiles, high ceilings, renovated double glazed wooden casement windows, custom-made furniture, designer lighting, data projector and screen, gas boiler, washing machine, dishwasher, spacious cellar.



* Size of the unit according to the Housing Act.

The area consists of the sum total of the internal area of every room.



Apartment Two-bedroom (3+1)

Rented

116 m², Prague 10, Vršovice, Mexická

