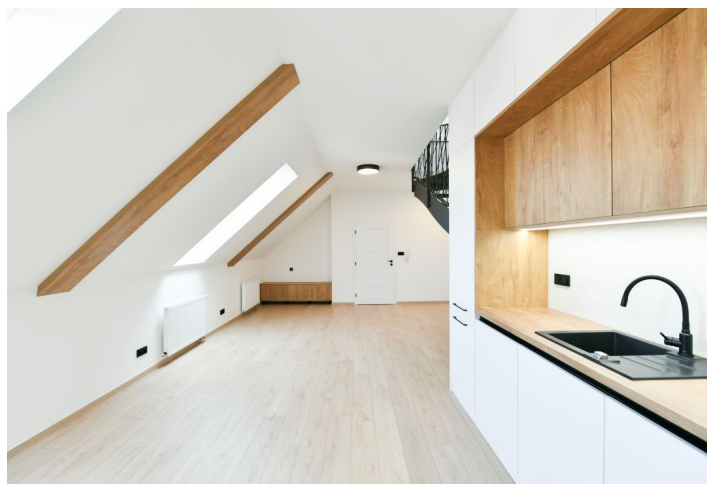
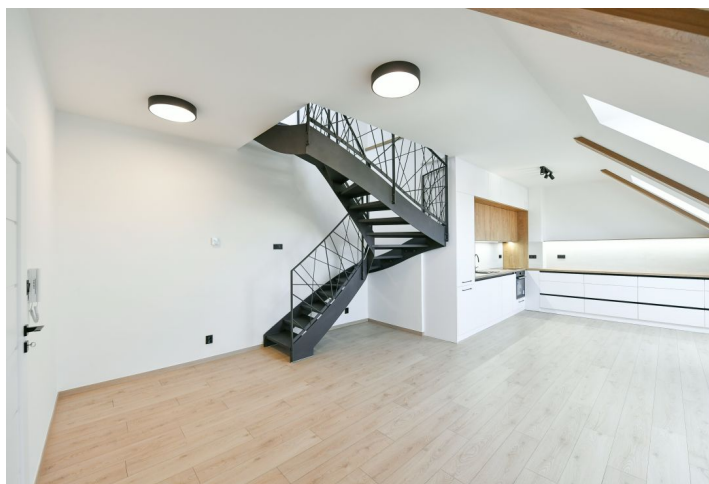




Apartment Three-bedroom (4+kk)

€ 2 570 | CZK 65 000

108 m², Praha 4, Nusle, Bartoškova





Apartment Three-bedroom (4+kk)

€ 2 570 | CZK 65 000

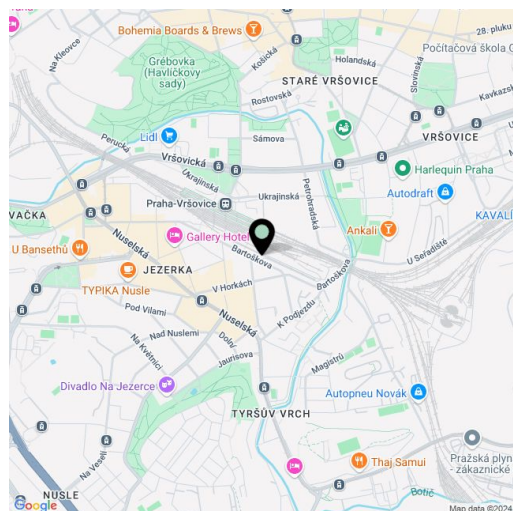
108 m², Praha 4, Nusle, Bartoškova

Total area	128 m ²
Floor area*	108 m ²
Terrace	20 m ²
Parking	-
Cellar	-
Service price	Monthly deposit for service charges and water: CZK 1,800 for one person, additional person CZK 800. Electricity and gas are billed separately.
PENB	G
Reference number	106162
Available from	Immediately

This newly refurbished unfurnished apartment with a terrace facing a quiet courtyard is on the 5th topmost floor of a renovated apartment building with an elevator in Nusle, Prague 4. Located just moments from Bratří Synků Square with tram stops, in a neighborhood with full amenities, great connections to the city center, and close to the Mečislavka community garden and Jiráskovy Sady and Na Fidlovačce parks. It takes 5 min. by tram to get to the I.P. Pavlova metro station, and 7 min. to the Muzeum transfer station. The Jezerka and Folimanka parks and the romantic Grébovka Park can be reached on foot. Conveniently located for the Arkády Pankrác shopping mall and Pankrác business center. The closest metro stations are Vyšehrad and Pražského povstání.

The lower level features a living room with a fully fitted open plan kitchen and dining area, a toilet, and an entrance hall. The upper floor includes three bedrooms with built-in wardrobes, a **terrace** accessible from two of the bedrooms, and a bathroom (bathtub, walk-in shower, toilet).

Laminate floating floors, tiles, gas boiler, washing machine, dishwasher, induction stove top, alarm.



* Size of the unit according to the Housing Act.
The area consists of the sum total of the internal area of every room.