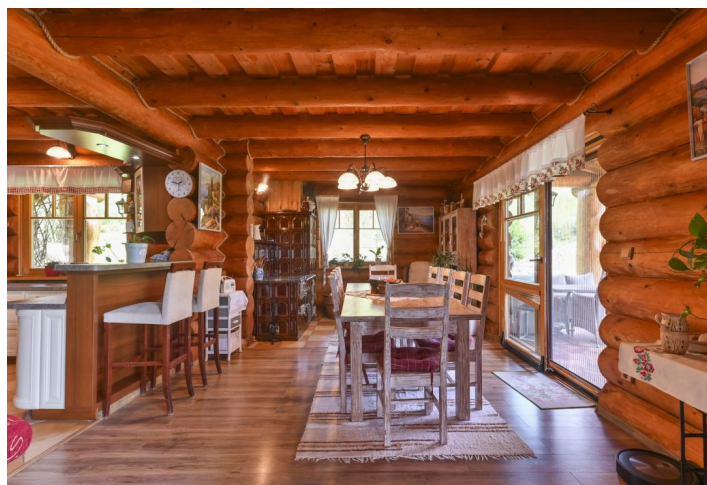




## House Five-bedroom (6+kk)

Ask for price

547 m<sup>2</sup>, Podzámčok, Zvolen





## House Five-bedroom (6+kk)

[Ask for price](#)547 m<sup>2</sup>, Podzámčok, Zvolen

Total area	547 m <sup>2</sup>
Plot	11 123 m <sup>2</sup>
Foot print	244 m <sup>2</sup>
Floor area	341 m <sup>2</sup>
Balcony	17 m <sup>2</sup>
Parking	Yes
Garage	86 m <sup>2</sup>
Cellar	103 m <sup>2</sup>
PENB	A
Reference number	106180

**Surrounded by greenery, this energy-efficient log house is located on the edge of the picturesque village of Podzámčok near Zvolen. Spruce wood is the main feature of the house, and in addition to the hectare of land it stands on, it also includes a double garage, a gazebo with a fireplace, a brick cellar, and a sauna.**

On the 1st floor of the house, set on a slightly sloping terrain, is a living room with a **fireplace**, a kitchen with a pantry, a dining area with a **tiled stove** and access to the **terrace**, 2 bedrooms, and a bathroom. In the attic (2nd floor) there are 3 rooms with **two balconies**, a gallery, a **wardrobe**, a bathroom with a toilet, a second bathroom with a corner bath with a **whirlpool** and a **sauna**, and a storage room. Within the fenced plot is an **insulated double garage**, a **gazebo with a fireplace (35 m<sup>2</sup>)**, a **stone cellar (103 m<sup>2</sup>)**, a **carport (79 m<sup>2</sup>)**, and a drilled well used for domestic water and the irrigation system.

The staircase, floors, doors, and windows with double-glazed thermal insulation are made of **spruce wood**. Ceramic tiles in the kitchen and bathrooms have underfloor heating, electric convectors are used in the living rooms, and hot water is provided by 2 electric boilers. The house also has an IT network, a security system, or a wastewater treatment plant. The space in front of the garage has interlocking paving (220 m<sup>2</sup>).

The location offers not only **privacy**, but also complete civic amenities. The village of Podzámčok is conveniently located close to big cities—10 km south of Zvolen and 30 km from Banská Bystrica. The log house is located in the northeastern part of the **Pliesovská basin** bordering the **Javorie mountain range**.

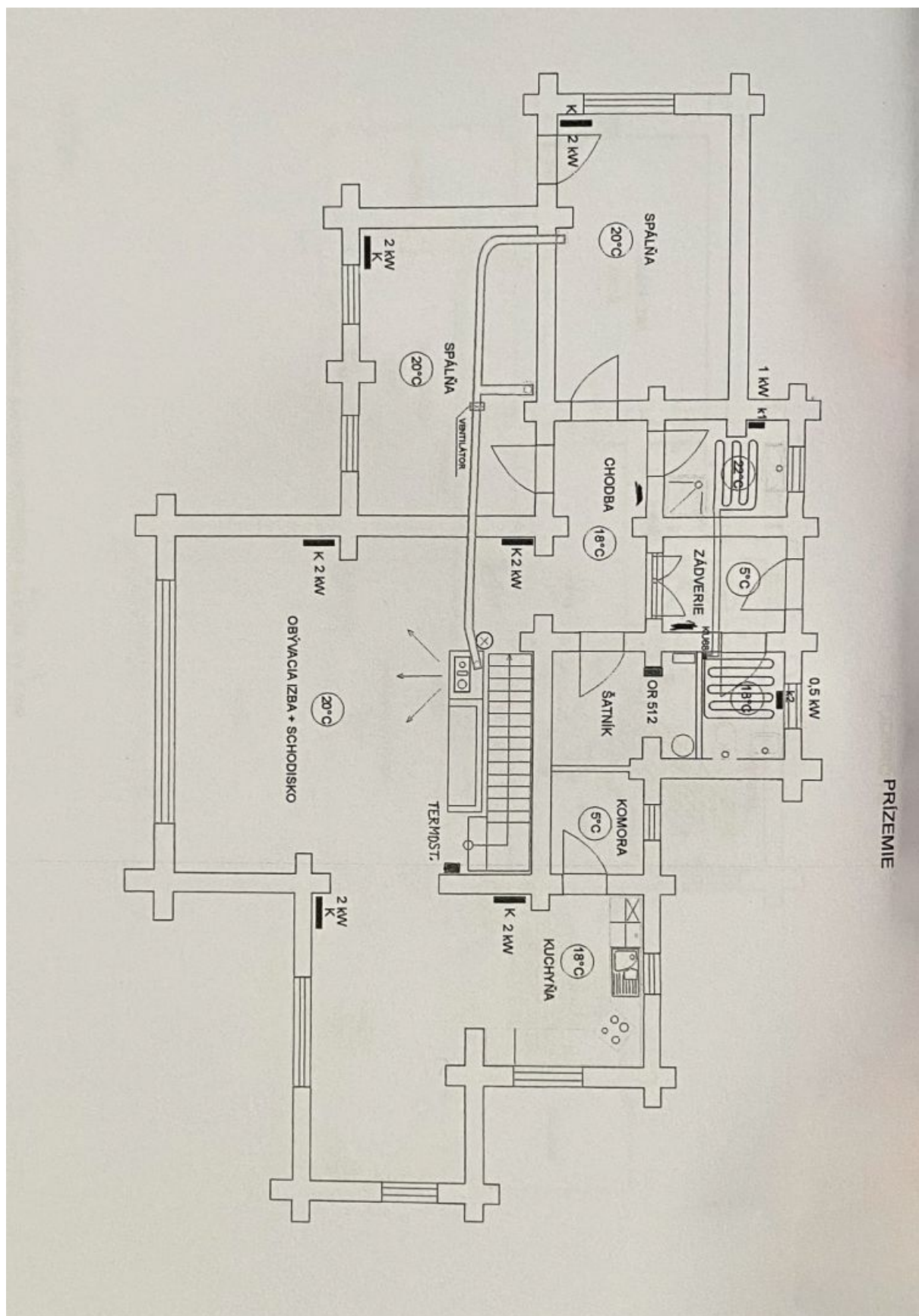
Usable area 547 m<sup>2</sup>, floor area 341 m<sup>2</sup>, balconies 17 m<sup>2</sup>, plot 11,123 m<sup>2</sup>.



# House Five-bedroom (6+kk)

Ask for price

547 m<sup>2</sup>, Podzámčok, Zvolen





## House Five-bedroom (6+kk)

547 m<sup>2</sup>, Podzámčok, Zvolen

Ask for price

