



## Apartment Three-bedroom (4+1)

Rented

129 m<sup>2</sup>, Prague 6, Bubeneč, Gotthardská





## Apartment Three-bedroom (4+1)

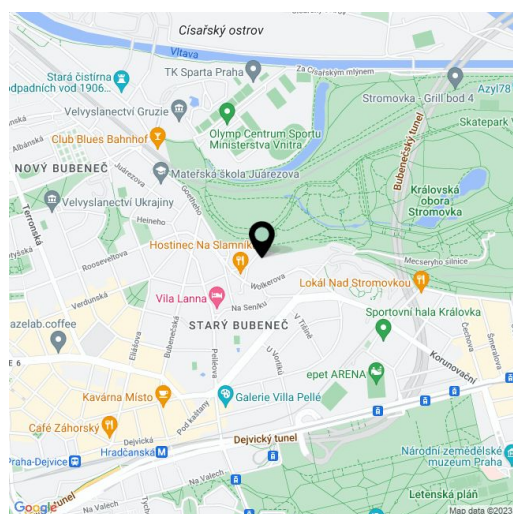
**Rented**129 m<sup>2</sup>, Prague 6, Bubeneč, Gotthardská

Total area	129 m <sup>2</sup>
Parking	Parking is subject to availability.
Cellar	-
PENB	F
Reference number	10623
Available from	Immediately

Greatly benefiting from the location right next to the Stromovka Park, this is a fully newly renovated, fully furnished 3-bedroom 2-bathroom apartment on the second floor of a completely refurbished 19th century building with a new lift. Located in a quiet cul-de-sac in the prestigious embassy district of Bubeneč, a few min. walk to a bus stop, and a short walk to Hradčanská and Dejvická metro stations with full amenities in the immediate vicinity. Conveniently located for the international schools in Prague 6 and the airport.

The interior features a corner living room, a fully fitted kitchen, a master bedroom with an en-suite bathroom, two further bedrooms, a family bathroom, and an entrance hall. Both bathrooms include a bathtub, a sink, a toilet, and a bidet shower.

**Built-in wardrobes in all bedrooms and the hall, solid wood parquet floors, tiles, security entry door, large windows, dishwasher, induction cooktop, microwave oven, gas boiler, satellite reception. Parking** next to the building at CZK 3000/month (subject to availability). Deposit for service charges and water: CZK 2500/month. Electricity and gas will be transferred to the tenant.



\* Area of the unit according to the Civil Code. The area consists of the sum total area of the entire unit bounded by perimeter walls.

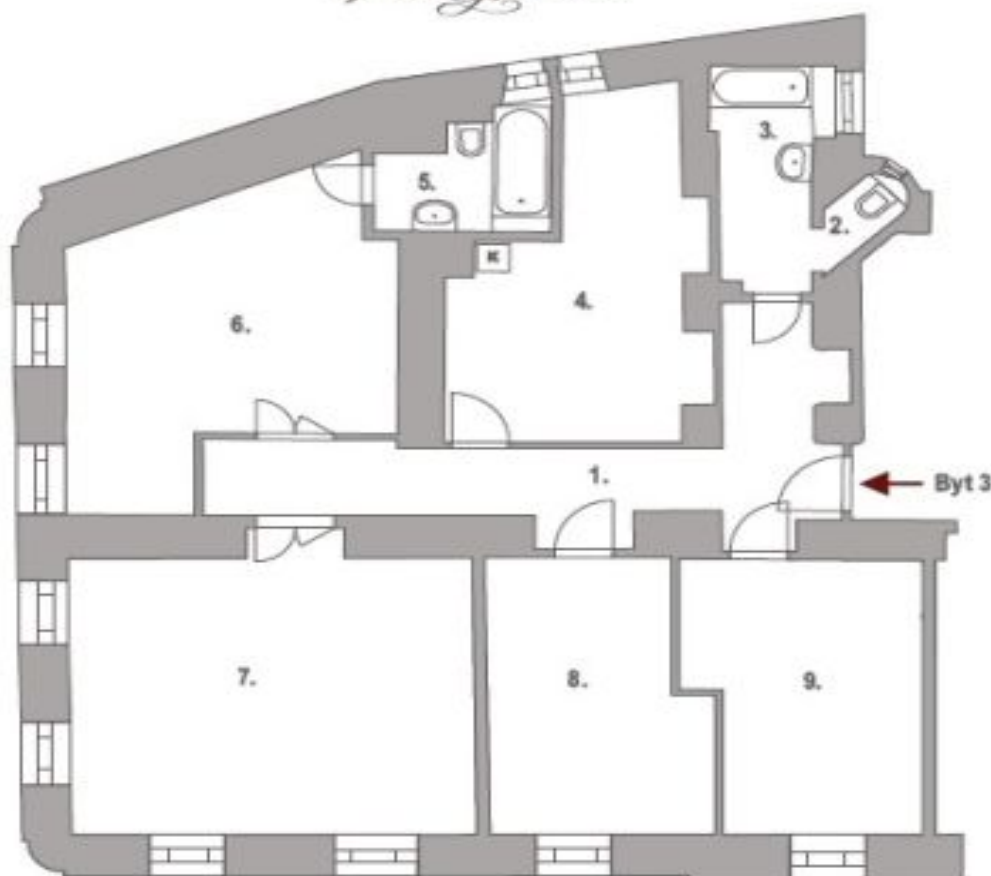




# Apartment Three-bedroom (4+1)

Rented

129 m<sup>2</sup>, Prague 6, Bubeneč, Gotthardská



## 2.PATRO



## BYT 3 4+1



Byt 3		3.NP
1.	chodba	15,1 m <sup>2</sup>
2.	WC	1,0 m <sup>2</sup>
3.	koupelna	5,0 m <sup>2</sup>
4.	kuchyň	15,2 m <sup>2</sup>
5.	koupelna	3,9 m <sup>2</sup>
6.	pokoj	20,7 m <sup>2</sup>
7.	obýv.pokoj s jiklínou	26,9 m <sup>2</sup>
8.	pokoj	13,1 m <sup>2</sup>
9.	pokoj	14,1 m <sup>2</sup>
Celková užiténá plocha bytu		115,0 m <sup>2</sup>
<b>Celková podlahová plocha</b>		<b>129,4m<sup>2</sup></b>