



## Apartment Three-bedroom (4+1)

Rented

133 m<sup>2</sup>, Prague 6, Bubeneč, Gotthardská





## Apartment Three-bedroom (4+1)

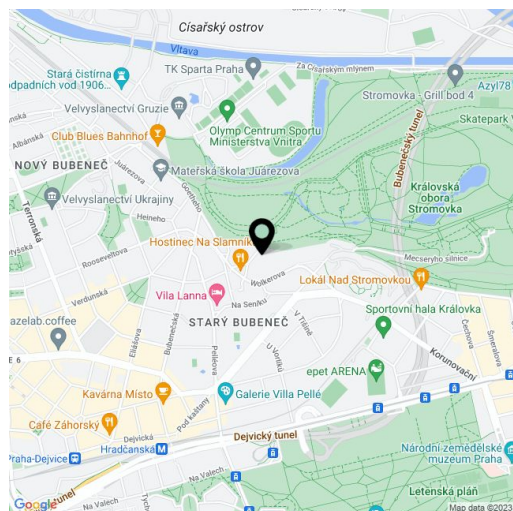
**Rented**133 m<sup>2</sup>, Prague 6, Bubeneč, Gotthardská

Total area	133 m <sup>2</sup>
Parking	Parking is subject to availability.
Cellar	-
PENB	F
Reference number	10624
Available from	Immediately

Greatly benefiting from the location right next to the Stromovka Park, this is a fully newly renovated, unfurnished 3-bedroom 2-bathroom apartment on the third floor of a completely refurbished 19th century building with a new lift. Located in a quiet cul-de-sac in the prestigious embassy district of Bubeneč, a few min. walk to a bus stop, and a short walk to Hradčanská and Dejvická metro stations with full amenities in the immediate vicinity. Conveniently located for the international schools in Prague 6 and the airport.

The interior features a corner living room, a fully fitted kitchen, a master bedroom with an en-suite bathroom, two further bedrooms, a family bathroom, and an entrance hall. Both bathrooms include a bathtub, a sink, a toilet, and a bidet shower.

**Solid wood parquet floors**, tiles, security entry door, large windows, dishwasher, induction cooktop, microwave oven, gas boiler, satellite reception. The apartment is offered without furniture, it can be fully furnished as shown in the photos, at a higher rent. **Parking** next to the building at CZK 3000/month is subject to availability. Deposit for service charges and water: CZK 2500/month. Electricity and gas will be transferred to the tenant.



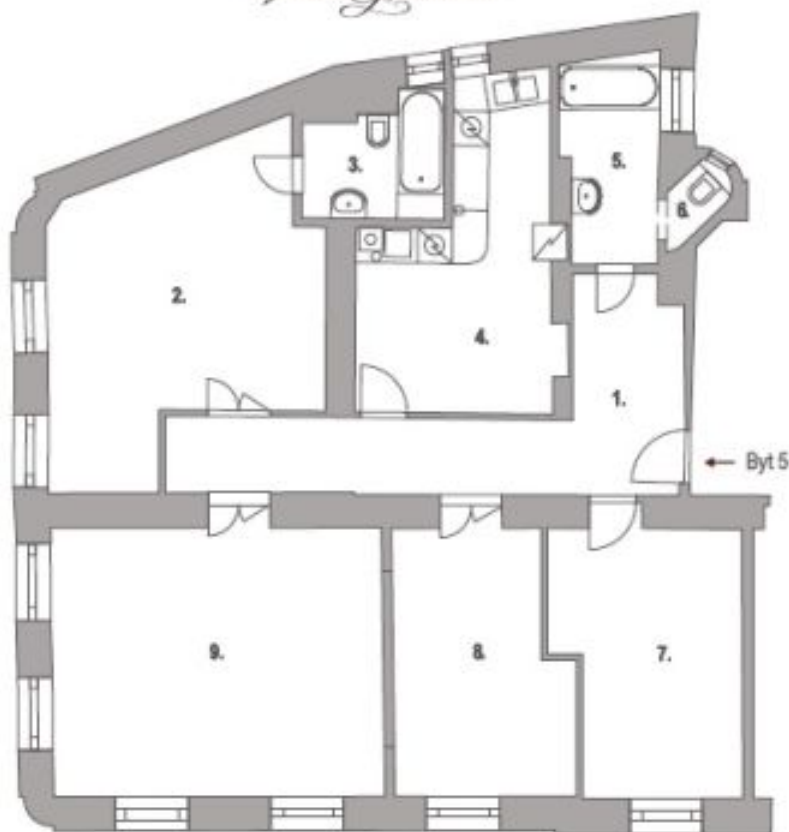
\* Area of the unit according to the Civil Code. The area consists of the sum total area of the entire unit bounded by perimeter walls.



## Apartment Three-bedroom (4+1)

133 m<sup>2</sup>, Prague 6, Bubeneč, Gotthardská

Rented



### 3. PATRO



### BYT 5 4+1

AKRO building s.r.o.  
nám I.P.Pavlova 1789/5  
120 00 Praha 2  
tel: 606 723 723  
www.villa-gotthard.cz

Uzávěrka akce na pozemkové území. Nezávislé územní území - Byt 5, 4+1, 133 m<sup>2</sup>, Praha 6, Gotthardská, www.akro.cz

Byt 5	4.NP
1. chodba	15,7 m <sup>2</sup>
2. pokoj	22,8 m <sup>2</sup>
3. koupelna	4,4 m <sup>2</sup>
4. kuchyň	14,8 m <sup>2</sup>
5. koupelna	5,4 m <sup>2</sup>
6. WC	1,1 m <sup>2</sup>
7. pokoj	14,3 m <sup>2</sup>
8. pokoj	13,3 m <sup>2</sup>
9. obýv.pokoj s jídelnou	28,7 m <sup>2</sup>
<b>Celková užžitná plocha bytu</b>	<b>120,5 m<sup>2</sup></b>
<b>Celková podlahová plocha</b>	<b>132,8 m<sup>2</sup></b>